



FOLLOWWELLS

FOLLOWWELLS

20 Bedford Crescent, Newcastle - ST5 3EH  
£115,000

- Cash Buyers Only
- Semi Detached House
- In Need Of Refurbishment
- Second Kitchen/Utility
- Two Double Bedrooms
- Good Size Plot
- Popular Residential District
- No Upward Chain

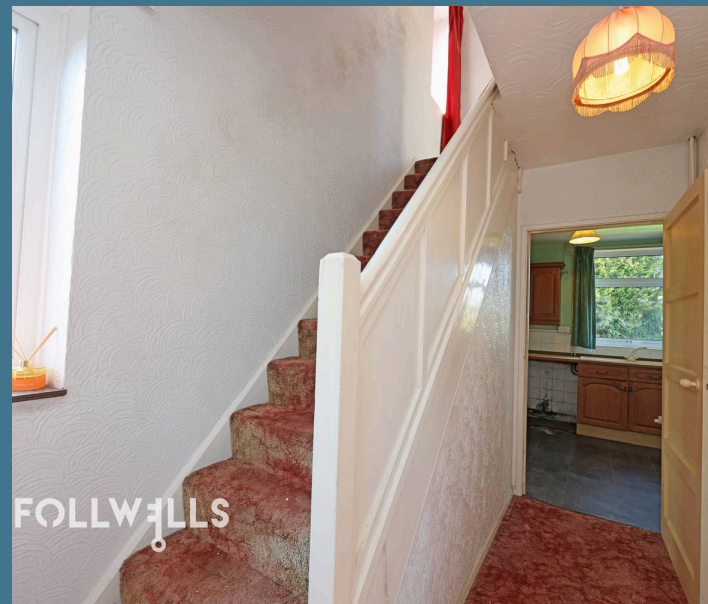
CASH BUYERS ONLY - LEVEL 3 RED ASH, COPY AVAILABLE IN THE OFFICE.

A two bedroom semi detached house in need of general refurbishment. Situated within a popular and convenient district for town, and the Royal Stoke Hospital.

The property is currently vacant and is offered For Sale with no further upward chain. It benefits from an additional utility/2nd kitchen with two double bedrooms and a refitted shower room to the first floor. Standing on a generous garden plot which includes potential for off-road parking (STPP) and a private rear garden.

Accommodation details: –

Entrance hall with staircase and access to the living room, with Adam style fireplace and dual window outlook to front and rear. Door to kitchen, with fitted units, provision for washing machine, rearview window and pantry. An archway leads through to the second kitchen area/utility with further matching fitted units and space for further appliances including wall mounted boiler within recess. There is window outlook to the front and side, with a door giving access to the rear.





First floor landing with side window, access to loft and airing cupboard housing cylinder. Access to two large double bedrooms, with the main bedroom having cupboard over stairwell. Re-fitted fully tiled shower room with walk in shower cubicle having electric shower, vanity wash basin and enclosed WC.

Externally there is fencing to the front boundary and a pathway leading to the front door, with low maintenance gravel frontage providing potential for off-road parking (STPP). There is wide access to the side leading to a good size rear garden with patio and lawn.

Council Tax band: B

Tenure: Freehold

EPC Energy Efficiency Rating: E



