

RENT ME



HORNBEAM AVENUE, RED LODGE

£2,400 PCM



5



3



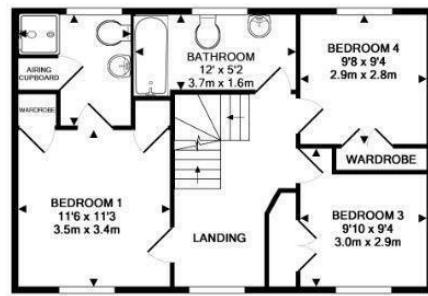
1



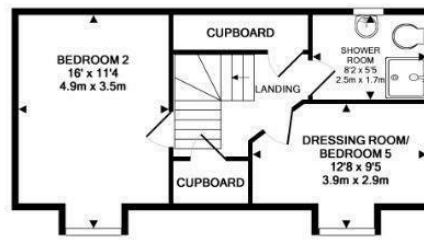
C

5 Bedroom House - Detached located in Red Lodge

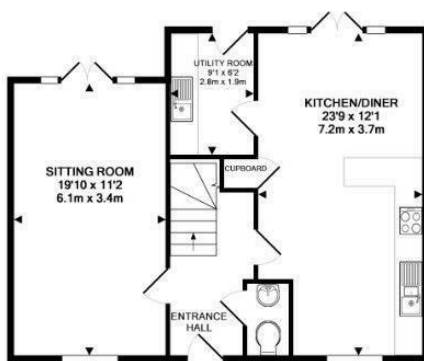
****AVAILABLE TO VIEW**** Detached 5 bed house with 3.5 baths and enclosed garden. Kitchen/Dining Room, Utility Room, Living Room, 5 bedrooms 3 with closets, master with en-suite. Gas Heating. GARAGE and double parking spaces



1ST FLOOR
APPROX. FLOOR
AREA 586 SQ.FT.
(54.4 SQ.M.)



2ND FLOOR
APPROX. FLOOR
AREA 427 SQ.FT.
(39.6 SQ.M.)



GROUND FLOOR
APPROX. FLOOR
AREA 652 SQ.FT.
(60.5 SQ.M.)

TOTAL APPROX. FLOOR AREA 1664 SQ.FT. (154.6 SQ.M.)

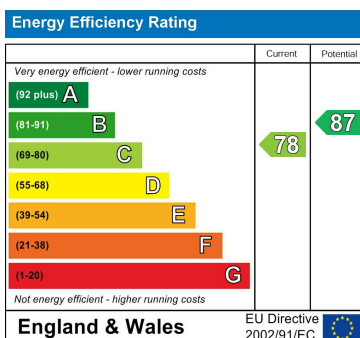
Whilst every attempt has been made to ensure the accuracy of the floor plan contained here, measurements of doors, windows, rooms and any other items are approximate and no responsibility is taken for any error, omission, or mis-statement. This plan is for illustrative purposes only and should be used as such by any prospective purchaser. The services, systems and appliances shown have not been tested and no guarantee as to their operability or efficiency can be given.

Made with Metropix ©2013

Council Tax Band

E

Energy Performance Graph



Call us on

01638 551551

enquiries@lodge-lettings.co.uk

www.lodge-lettings.co.uk

Agents Note: Whilst every care has been taken to prepare these particulars, they are for guidance purposes only. All measurements are approximate and are for general guidance purposes only and whilst every care has been taken to ensure their accuracy, they should not be relied upon and potential buyers are advised to recheck the measurements.