



Park Street, SE1

£835,000

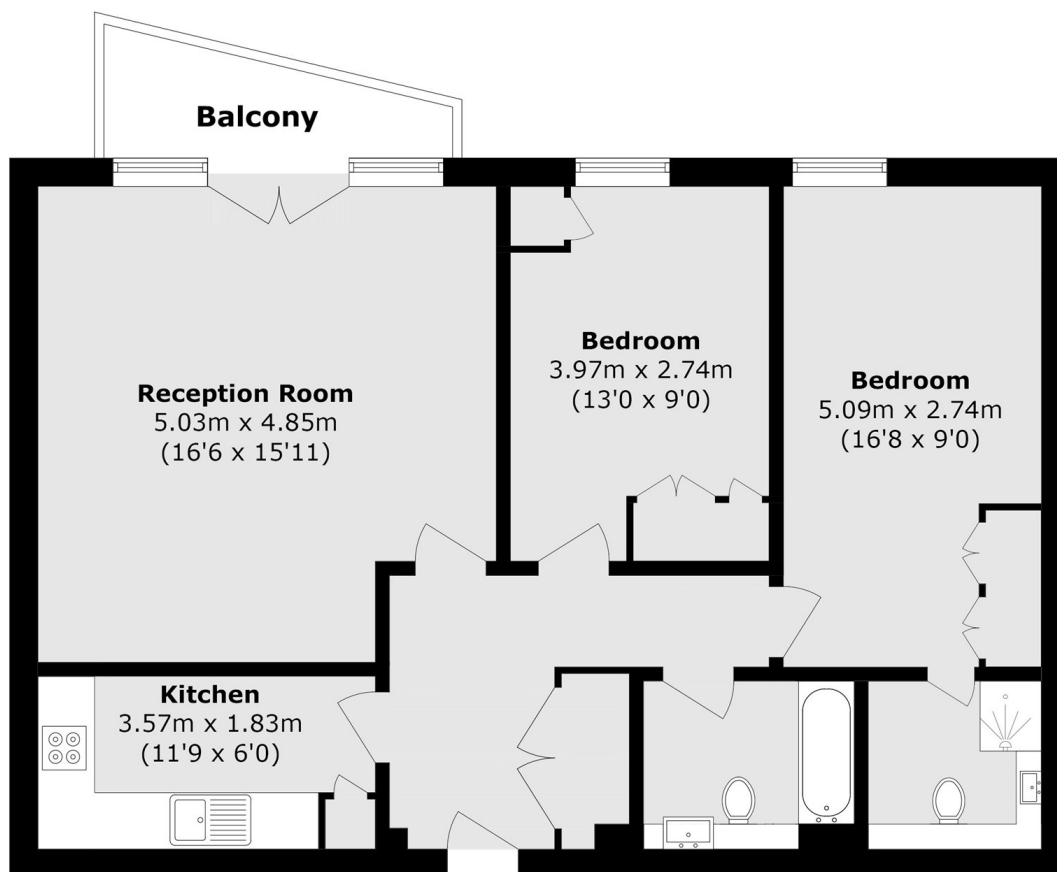
Situated just moments from the River and Borough Market, this highly attractive lateral flat offers generous living space and a well-appointed kitchen. The property features two spacious double bedrooms, two modern bathrooms, and a private balcony, perfect for relaxing or entertaining. Additional benefits include secure off-street parking and a chain-free sale.

Old Theatre Court occupies the historic site of the original Globe Theatre and is ideally located close by to London Bridge station. Set in the heart of vibrant Bankside, the development is surrounded by an eclectic mix of independent boutiques, renowned restaurants, cosy cafés, and artisan eateries. Residents can enjoy a stroll along the nearby South Bank, take in world-class exhibitions at Tate Modern, or explore the atmosphere and flavours of Borough Market - all just moments from the doorstep.

Features

- Historic Location
- Two Bedrooms & Two Bathrooms
- Open Plan Living Space
- Private Balcony
- Secure Underground Parking
- Chain Free Sale

Park Street,
London, SE1



First Floor

Total Area (approx.): 74.5 sq. m (801.9 sq. ft)

Balcony area (approx.): 3.6 sq. m (38.7 sq. ft)