



Ali Richards

exp UK

@ ali.richards@exp.uk.com

alirichards.exp.uk.com

07398 060 463

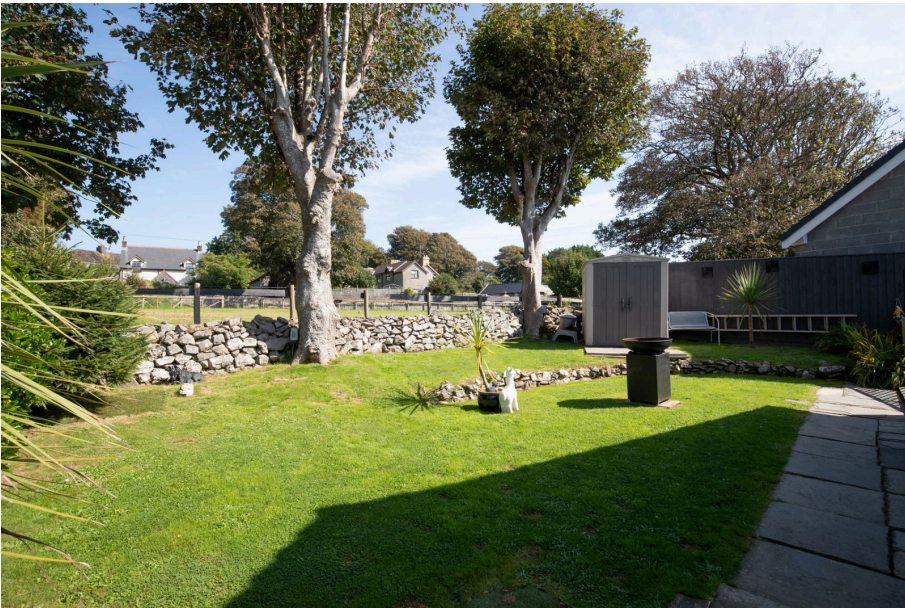
Warlows Meadow, Manorbier, Tenby, Pembrokeshire, SA70 7TG

Offers Over £325,000

🛏 2 🚿 1 🛋 1



- Quote Ref AR0614
- No Forward Chain
- Garage & Parking for Several Cars
- Gas Central Heating /Combi Boiler
- Sun Room
- Garden with Meadow Views
- 2 Double Bedrooms
- Epc Rating D
- Sought After Village Location
- Close proximity to Manorbier Beach & Castle



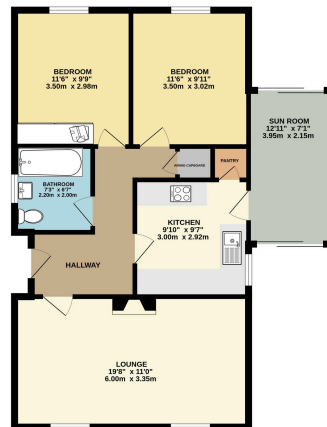
Quote Ref AR0614 - No Forward Chain

Situated in the sought-after village of Manorbier, this beautifully presented two double bedroom detached bungalow has been a much-loved family home since 2015 and has been thoughtfully refurbished to a high standard throughout.

Offering light-filled accommodation, modern comforts and delightful meadow views, 1 Warlow's Meadow is an ideal home for those seeking village living with coastal charm. Early viewing is highly recommended to fully appreciate the setting, space and quality on offer. Viewing is highly recommended.



GROUND FLOOR
771 sq.ft. (71.6 sq.m.) approx.



TOTAL FLOOR AREA: 771 sq.ft. (71.6 sq.m.) approx.

While every attempt has been made to ensure the accuracy of the description contained herein, measurements of rooms, fixtures, fittings and other details are given as approximate only. The actual measurements may vary slightly from those given. The description is given as a guide only and does not constitute a contract. The actual measurements may vary slightly from those given. The description is given as a guide only and does not constitute a contract.

Energy performance certificate (EPC)

1, Warlows Meadow
Manorbier
SA16 7TG

Energy rating

D

Valid until: 18 January 2028

Certificate number: 9718-2677-7298-3178-3910

Property type

Detached bungalow

Total floor area

67 square metres

Rules on letting this property

Properties can be let if they have an energy rating from A to E.

You can read [guidance for landlords on the regulations and exemptions](#)

<https://www.gov.uk/guidance/domestic-private-rented-property-energy-efficiency-standard-landlords>.

Energy rating and score

This property's current energy rating is D. It has the potential to be B.

[See how to improve this property's energy efficiency.](#)

Score	Current rating	Potential
92-100	A	A
81-91	B	B
69-80	C	C
55-68	D	D
35-54	E	E
2-34	F	F
1-23	G	G

← B

← D

The graph shows this property's current and potential energy rating.

Properties get a rating from A (best) to G (worst) and a score. The better the rating and score, the lower your energy bills are likely to be.

For properties in England and Wales:

- the average energy rating is D
- the average energy score is 50