



## Roland Gardens, SW7

£530 Per week

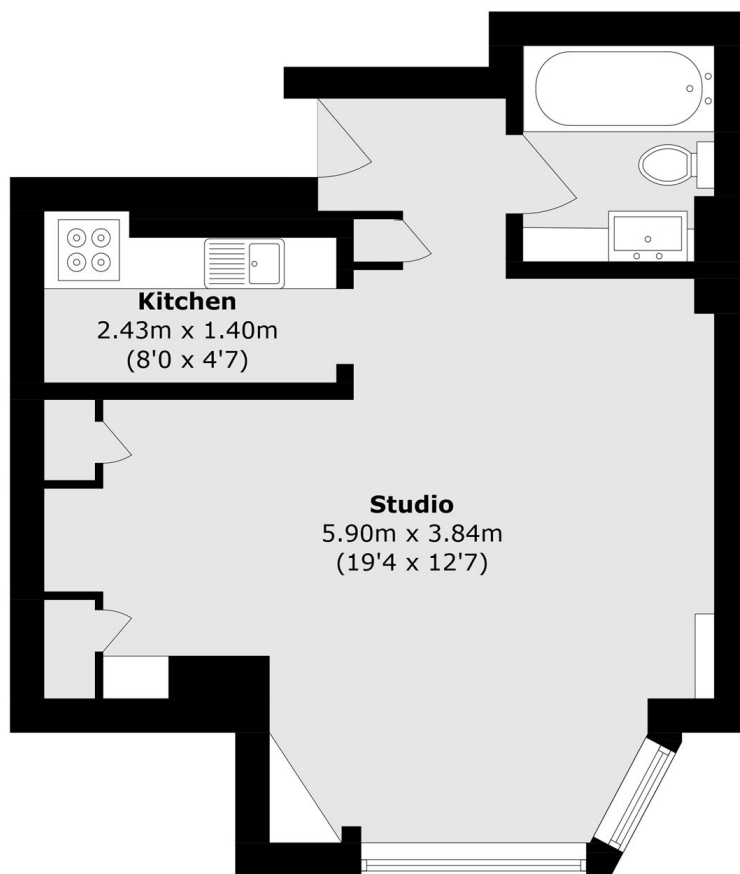
A recently refurbished studio apartment set within an attractive building. The property offers a separate kitchen, ample built-in storage, and inclusive heating and hot water within the rent.

Ideally located close to Gloucester Road, the property is surrounded by a wide selection of cafés, shops, and restaurants, including a Waitrose supermarket, Boots chemist, and a Prêt à Manger coffee shop.

### Features

- Studio Apartment
- One Bathroom
- Separate Kitchen
- Heating & Hot Water Included
- Period conversion
- Ample Storage

# Roland Gardens, London, SW7



## Lower Ground Floor

Total area (approx.): 33.8 sq. m (363.8 sq. ft)