



**Price**  
**£110,000**

**Leasehold**

1x  1x  1x 

**Gordon Court, Player  
Street, Ryde, Isle of  
Wight, PO33**

**Pittis**   
Helping you move forwards



## Main features

- Spacious ground floor apartment
- Offered chain free and with vacant possession
- Allocated parking to the rear
- Ready to move into and ideal for an individual or couple
- Highly sought after area to enjoy modern living on the edge of town



## Accommodation

### GROUND FLOOR

Entrance Hallway

Lounge/ Dining Room: 14'7 x 12'2  
(4.45m x 3.71m)

Kitchen : 10'9 x 5'2 (3.28m x 1.58m)

Bedroom : 11'8 x 9'3 (3.56m x 2.82m)

Bathroom

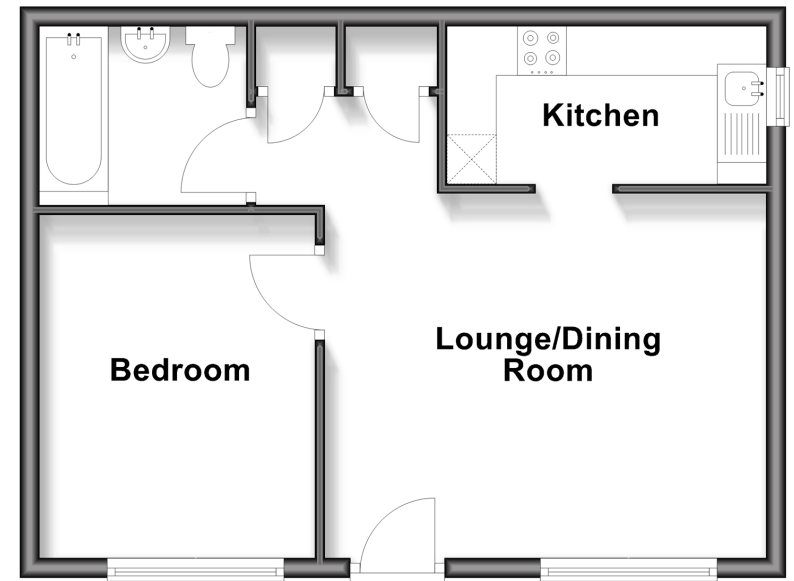
### OUTSIDE

Allocated Parking



## Ground Floor

Approx. 40.1 sq. metres (431.3 sq. feet)



Call Ryde - 01983 564646 ■ [pittis.co.uk](http://pittis.co.uk)

- Legal advice should be taken to verify fixtures/fittings, planning, alterations and/or lease details
- Appliances & services are untested, dimensions are approximate and floor plans are not to scale



60426934/20260120/SH/AGAN