



Reception Room  
12'8" x 11'5"

WC

Utility Room  
7'5" x 4'2"

Kitchen/ Diner  
26'5" x 16'2"

Bedroom  
10'2" x 6'3"

Bedroom  
12'2" x 10'11"

Bedroom  
12'7" x 10'11"

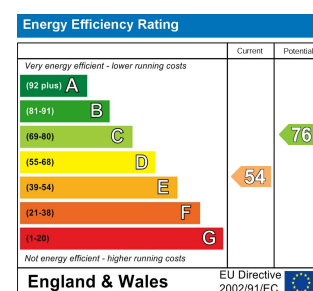
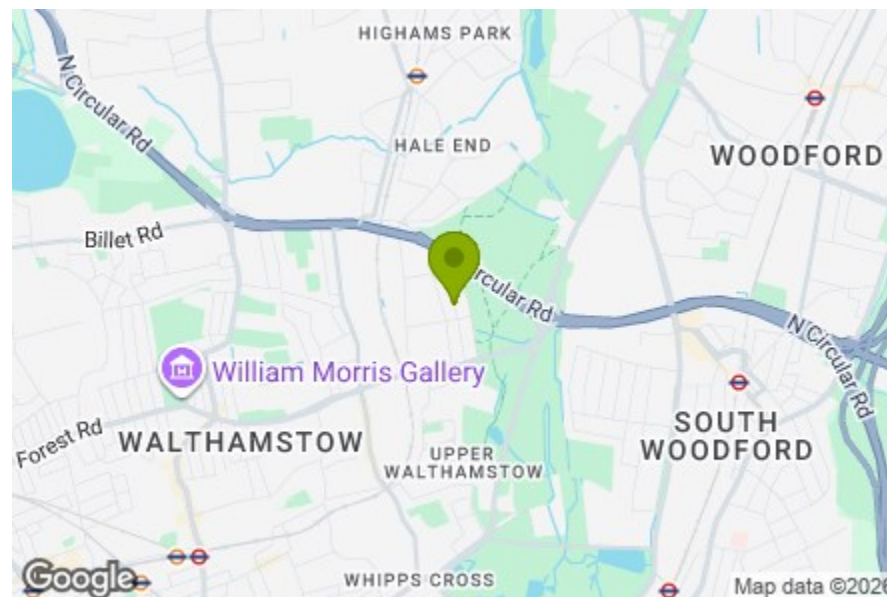
Bathroom  
7'11" x 6'4"

Bedroom  
19'5" x 11'6"

Bathroom  
7'10" x 6'4"

Garden  
26'2"

Outbuilding  
17'7" x 7'0"



## GRANTOCK ROAD, WALTHAMSTOW Offers In Excess Of £759,500 Freehold 4 Bed House



### Features:

- Four Bedroom Freehold House
- Rear Kitchen Extension with Bi-fold Doors
- Private Garden with Decked Area
- Garden Room
- Converted Loft with En-Suite
- Off Street Parking
- Offered Chain Free
- Moments to the Green Spaces of Epping Forest

A generously proportioned four bedroom, two bathroom detached home set on a peaceful residential street in Walthamstow, offered chain free. Thoughtfully arranged across three floors, the property includes a bright kitchen extension with bi-fold doors, a converted loft with en suite, and a private garden with a decked area and garden room. You're also within easy reach of Wood Street's independent cafés, shops and Overground station, while the open greenery of Epping Forest and Hollow Ponds is close by.

REQUEST A VIEWING  
0203 397 9797

**E11, E7, E12 & E15**  
hello11@stowbrothers.com  
0203 397 2222

**E4 & N17**  
hello4@stowbrothers.com  
0203 369 6444

**E17 & E10**  
hello17@stowbrothers.com  
0203 397 9797

**E18 & IG8**  
hello18@stowbrothers.com  
0203 369 1818

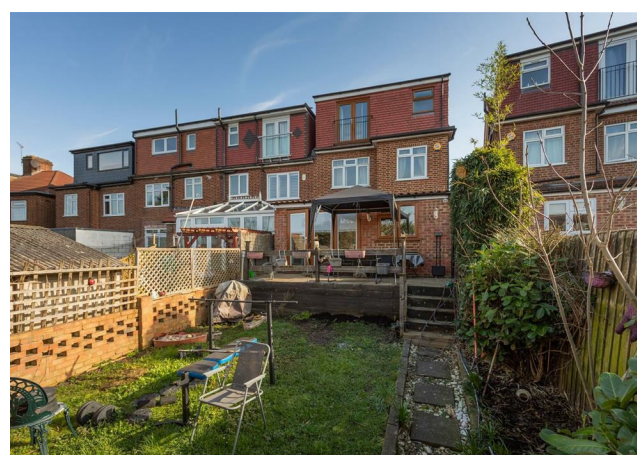
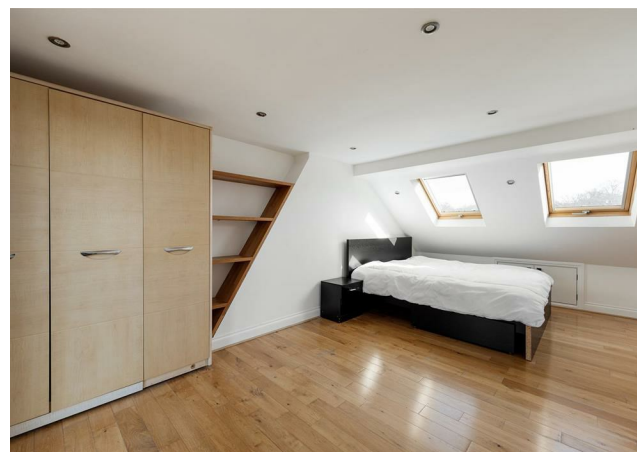
**E8, E9, E5, N16, E3 & E2**  
hellohackney@stowbrothers.com  
0208 520 3077

**New Homes**  
newhomes@stowbrothers.com  
0203 325 7227

**Investment & Development**  
id@stowbrothers.com  
0208 520 6220

**Property Maintenance**  
propertymanagement@stowbrothers.com  
0203 325 7228

STOWBROTHERS.COM  
@STOWBROTHERS



**IF YOU LIVED HERE.....**

Step inside and you're welcomed by a bright and sociable ground floor where the main living spaces flow easily together. To the rear, a spacious kitchen extension forms the heart of the home, with bi-fold doors opening wide onto the garden and drawing in plenty of natural light. There's ample space for dining as well as cooking, making it a natural gathering point for everyday meals or evenings with friends. The layout feels practical and well considered, with good storage and a calm, neutral finish that keeps the space feeling open and uncluttered.

Across the upper floors you'll find four bedrooms in total. The converted loft provides a particularly peaceful retreat, complete with its own en suite shower room and elevated outlook across the surrounding rooftops. The remaining bedrooms are well proportioned and filled with daylight, offering flexibility for family life, guests or a dedicated home office. A second bathroom serves the lower bedrooms, helping the home run smoothly for busy mornings.

Outside, the private garden extends the living space beautifully. A decked area just outside the house is perfect for morning coffee or weekend dining, leading onto a lawn and a garden room at the rear that offers useful additional space for work, hobbies or quiet relaxation.

**WHAT ELSE?**

- Around a 15 minute walk to Wood Street, home to favourites such as Dudley's, the much loved Wood Street Indoor Market and Chocolatine Bakery for fresh pastries and a great sourdough loaf.
- Epping Forest and Hollow Ponds are close by, offering woodland walks, open water and plenty of space to get outdoors.
- Wood Street Station provides regular Overground services to Walthamstow Central and London Liverpool Street, making journeys into the city straightforward.



**A WORD FROM THE EXPERT.....**

"I love living in Walthamstow – it's got such a great mix of things going on. Saturdays are my favourite, with the market in Lloyd Park full of fresh food, handmade bits, and plenty of friendly faces. The new Soho Theatre has brought amazing shows right to our doorstep, and if I fancy a pint, the Blackhorse Beer Mile breweries are perfect for a wander. When I need some fresh air, the Walthamstow Wetlands are just a short stroll away – all that greenery makes you completely forget you're in London. Plus, with brilliant transport links, it's so easy to hop on the Tube or Overground and be in Central London in no time at all".

WILLIAM JACKSON  
E17 ASSISTANT BRANCH MANAGER

**REQUEST A VIEWING**  
0203 397 9797

**FOLLOW US ➔ @STOWBROTHERS**  
**STOWBROTHERS.COM**