



36 Towse Court Icknield Place

Goring, RG8 0DN

75% Shared Ownership £225,000

A well-presented, two-bedroom second-floor apartment situated within Towse Court, an esteemed Extra Care Retirement Complex designed for residents aged 55 and over. This exceptional property offers the advantage of no rent on the remaining 25% ownership. It features a spacious master bedroom, a contemporary shower room with a good sized second bedroom. There is a generous lounge/diner seamlessly connected to a spacious modern kitchen.

Towse Court is ideally located in the picturesque village of Goring-on-Thames in South Oxfordshire, nestled between the scenic Chiltern Hills and the Berkshire Downs both designated areas of Outstanding Natural Beauty. The village boasts a vibrant community with a diverse range of shops, pubs, restaurants, and local amenities. It is well-equipped with several doctor and dental surgeries, making daily errands convenient. Additionally, the mainline train station provides easy access to London (Paddington), Didcot, and Oxford, ensuring excellent connectivity.

Please note there is a separate weekly Core Care charge £26.57

- Full Market Price £300,000
- Shares Available 75%
- Current Monthly Rent £0
- Current Monthly Service Charge £292.50
- Current Monthly Ground Rent £8.33
- Current Monthly Thames Water Charge £27.50
- Beautifully Presented Two Bed Second Floor Apartment
- Stylish & Modern Kitchen with Integrated Appliances
- Access to the Shower Room from Main Bedroom & Hallway



2



1

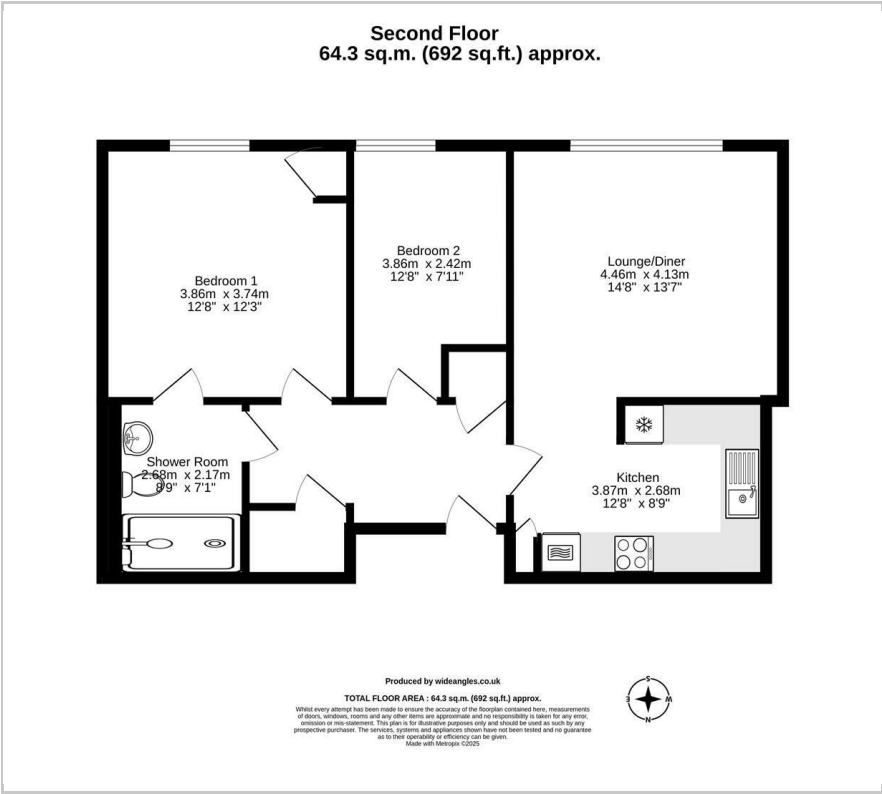


1



B

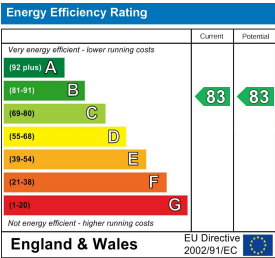
Floor Plan



Area Map



Energy Efficiency Graph



These particulars, whilst believed to be accurate are set out as a general outline only for guidance and do not constitute any part of an offer or contract. Intending purchasers should not rely on them as statements of representation of fact, but must satisfy themselves by inspection or otherwise as to their accuracy. No person in this firm's employment has the authority to make or give any representation or warranty in respect of the property.