



## Fairfax Road, TW11

£335,000

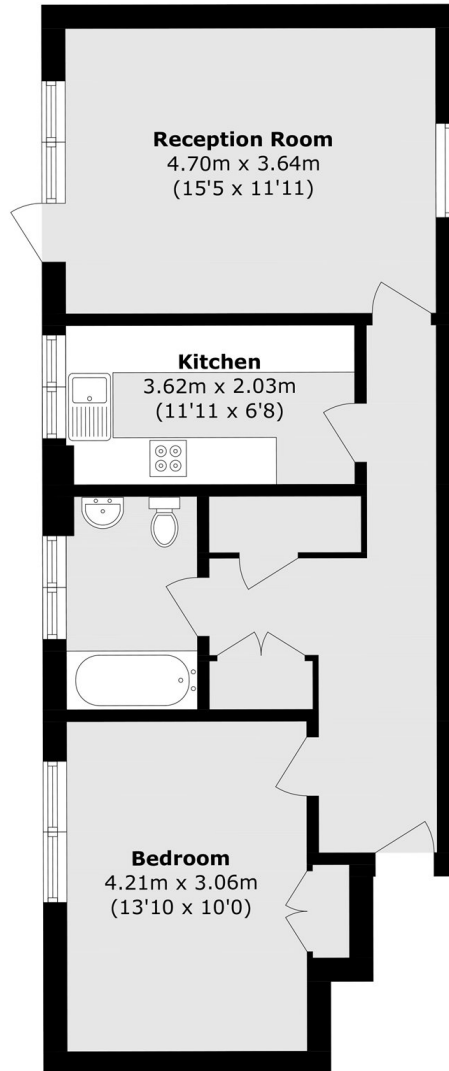
Located in a great spot which is perfect for transport links to the city. This development is very popular, offering generous square footage and communal gardens. With no onward chain you can move in quickly.

Fairfax Road is located centrally and very much sought after. Teddington train station is on your doorstep with a shortcut through to Bushy Park. The High Street is nearby with coffee shops, bars, restaurants and supermarkets.

### Features

- Central Location
- One Double Bedrooms
- Long Lease
- Ample Storage
- Communal Gardens
- 15ft Reception Room

# Fairfax Road, Teddington, TW11



Total area (approx.): 58.1 sq. m (625.4 sq. ft)