



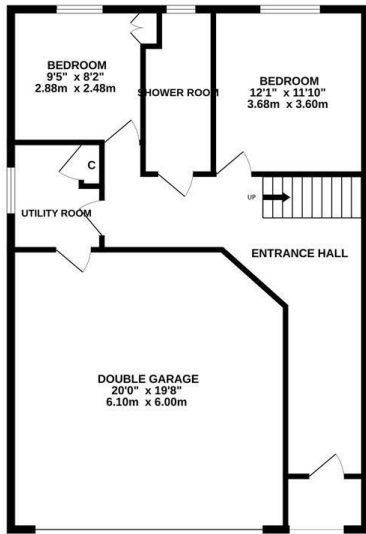
## Hardrada Rise, Hastings TN34 2PZ

Offers in excess of £750,000

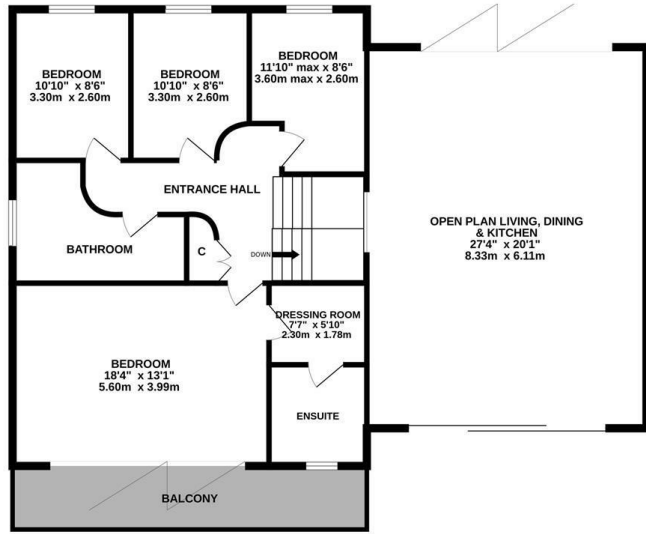


An architecturally designed, six bedroom DETACHED FAMILY HOME set in a PRIVATE ROAD in a quiet and leafy setting within immediate reach of popular schools, transport links and just a short stroll from both St. Helens Woods and Alexandra Park. This SPACIOUS AND VERSATILE PROPERTY has been well designed to create a CONTEMPORARY RESIDENCE with a sleek and sophisticated feel, perfect for family life. You enter into a welcoming entrance hall with built-in, bespoke wooden storage and stairs leading to the upper level. The stylish, OPEN PLAN LIVING SPACE measures an impressive 30'8 x 20'2 enjoying a bright, dual aspect and features a newly fitted, bespoke, hand-made kitchen with a large island featuring quartz worktop and hidden plinth drawers for additional storage, plus newly fitted engineered oak parquet flooring throughout. There are large sliding doors which frame the PICTURESQUE VIEWS from the front aspect and a set of BI-FOLDING DOORS at the rear, opening to the back garden and giving a sense of indoor/outdoor living. There are two double bedrooms on the ground floor, together with a NEWLY FITTED SHOWER

GROUND FLOOR  
947 sq.ft. (88.0 sq.m.) approx.



1ST FLOOR  
1375 sq.ft. (127.8 sq.m.) approx.



TOTAL FLOOR AREA: 2322 sq.ft. (215.7 sq.m.) approx.

Whilst every attempt has been made to ensure the accuracy of the floorplan contained here, measurements of doors, windows, rooms and any other items are approximate and no responsibility is taken for any error, omission or mis-statement. This plan is for illustrative purposes only and should be used as such by any prospective purchaser. The services, systems and appliances shown have not been tested and no guarantee as to their operability or efficiency can be given.  
Made with Metropix ©2026

