

Eastleigh, Thornaby



£167,500

IH INGLEBY HOMES





Modern throughout and stylishly presented, following significant upgrading, this especially attractive three bedroom property certainly merits internal inspection to be fully appreciated.

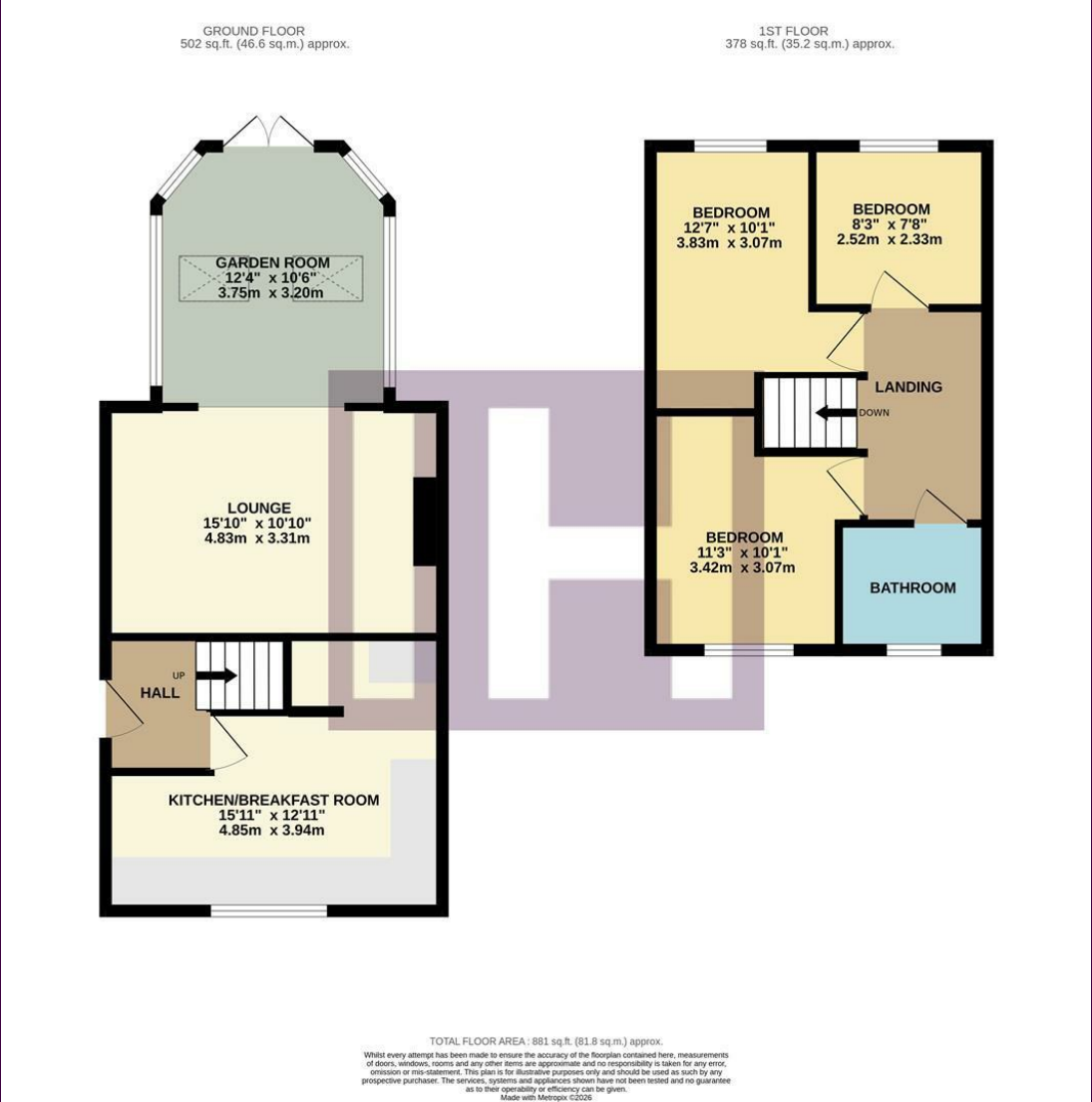
Just some of the impressive features include a stunning rear garden room/vaulted - roofed conservatory, a fabulous refitted kitchen, replaced boiler and contemporary refitted family bathroom.

The accommodation very briefly comprises a side entrance hall, spacious lounge with feature fireplace - open-plan to the rear garden room, and separate refitted kitchen to the ground floor. You arrive on the first floor to a landing with feature panelled wall, finding the superb family bathroom, and three bedrooms.



Sitting at the head of this quiet cul-de-sac, with a lengthy drive that allows ample off-road parking, passing the generous lawned front garden., with EV charging point, and approaching the garage with replaced electric roller door. The enclosed rear garden is split to a patio and raised timber deck/seating area.

The Layout



Energy Efficiency Rating			Environmental Impact (CO ₂) Rating		
	Current	Potential		Current	Potential
Very energy efficient - lower running costs					
(92 plus) A			Very environmentally friendly - lower CO ₂ emissions		
(81-91) B			(92 plus) A		
(69-80) C			(81-91) B		
(55-68) D			(69-80) C		
(39-54) E			(55-68) D		
(21-38) F			(39-54) E		
(1-20) G			(21-38) F		
Not energy efficient - higher running costs			(1-20) G		
England & Wales			England & Wales		
EU Directive 2002/91/EC			EU Directive 2002/91/EC		

The Location



Council Tax Band: B
Tenure: Freehold



- Stylish, significantly upgraded and deceptively spacious
- Stunning rear garden room open-plan to the lounge
- Very impressive refitted kitchen with integrated appliances
- Modern refitted, feature family bathroom
- Lengthy drive, garage with electric roller door
- Generous lawned front garden and enclosed rear garden



www.ingleby-homes.co.uk
01642 671025

IH INGLEBY HOMES