



Price
£230,000

Freehold

2x  1x  1x 

**Shelldrake Close, Isle Of
Grain, Rochester, Kent,
ME3**

OVER 60?

Secure this property
for up to **59% less!**

Wards
Helping you move forwards



Main features

- Ideal first time buy, no onward chain
- Village location, within half a mile of the coastal park
- Downstairs toilet, conservatory
- Garage en-bloc, enclosed rear garden
- Within quarter of a mile of convenience shops and primary school

Accommodation

GROUND FLOOR

- Lounge : 15'0 x 15'0 (4.58m x 4.58m)
- Inner Hallway
- Kitchen : 10'0 x 9'1 (3.05m x 2.77m)
- Toilet
- Conservatory: 13'2 x 6'9 (4.02m x 2.06m)

FIRST FLOOR

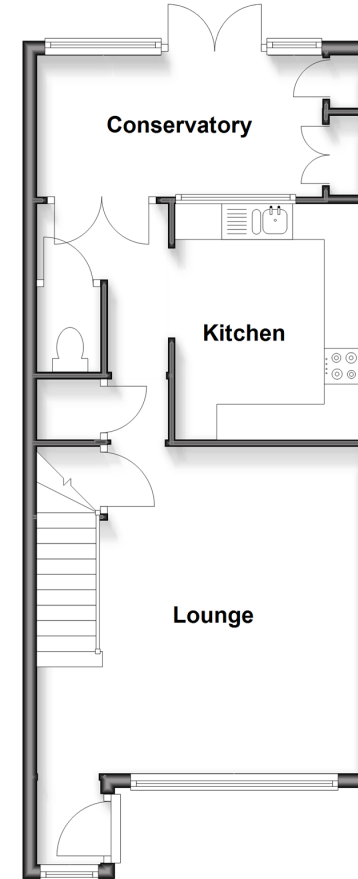
- Landing
- Bedroom 1 : 12'6 x 11'7 (3.81m x 3.53m)
- Bedroom 2 : 10'9 x 7'8 (3.28m x 2.34m)
- Bathroom : 10'5 x 7'0 (3.18m x 2.14m)

OUTSIDE

- Garage En-bloc
- Front Garden
- Rear Garden

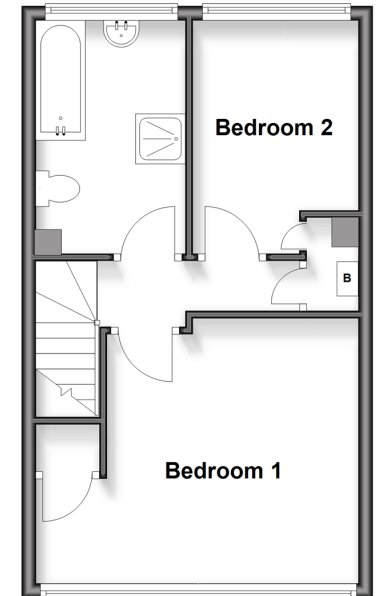
Ground Floor

Approx. 46.8 sq. metres (504.2 sq. feet)



First Floor

Approx. 35.8 sq. metres (385.6 sq. feet)



Call Strood - 01634 716597 ■ wardsof Kent.co.uk

- Legal advice should be taken to verify fixtures/fittings, planning, alterations and/or lease details
- Appliances & services are untested, dimensions are approximate and floor plans are not to scale
- Through a Homewise Home For Life Plan people aged 60+ can secure this property for up to 50% less, by purchasing a Lifetime Lease.



11846671/20250815/DV/JC