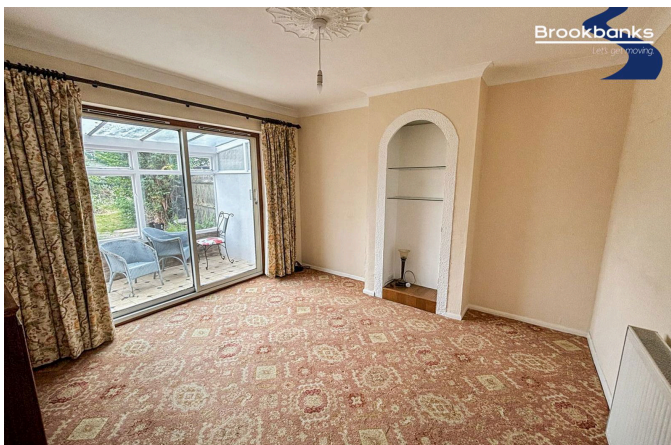


Haven Close, Swanley, BR8 7JZ

£450,000

 3  1  3



- Spacious 3-bedroom semi-detached home
- Large lounge ideal for family living
- Separate dining room perfect for entertaining
- Bright conservatory with views of the rear garden
- Modern kitchen and convenient ground-floor WC
- Three well-proportioned bedrooms on the first floor
- Family bathroom located upstairs
- Expansive rear garden, perfect for outdoor activities
- Driveway and garage offering ample parking and storage
- Prime location close to Swanley High Street and Station, available now, unfurnished



This spacious 3-bedroom semi-detached home in Haven Close, Swanley, is perfect for families. It features a large lounge, dining room, conservatory, kitchen, and a ground-floor WC. Upstairs, there are three bedrooms and a family bathroom. The property also boasts a large rear garden, driveway, and garage. Conveniently located near the High Street and Swanley Station, this unfurnished home is available now.