



Avon Road, TW16

£575,000

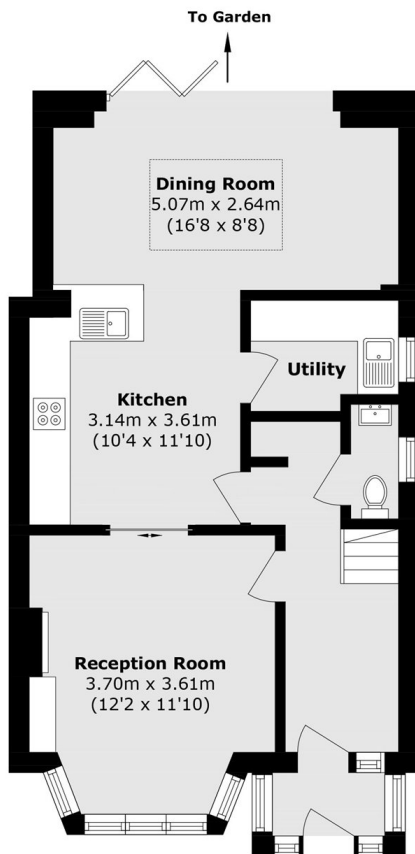
An extended three bedroom semi-detached family home with off-street parking, a garage and a private rear garden. The property is beautifully presented throughout with a stunning open plan kitchen, dining and family room which leads out on to the garden.

Set within the cul de sac section of Avon Road, this is a wonderful location. The local shops at Sunbury Cross and Sunbury station which provides a direct service into Waterloo are under half a mile away.

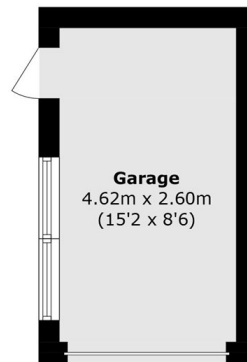
Features

- Semi-Detached
- Three Bedrooms
- Extended Ground Floor
- Excellent Condition
- Garage
- Off-Street Parking

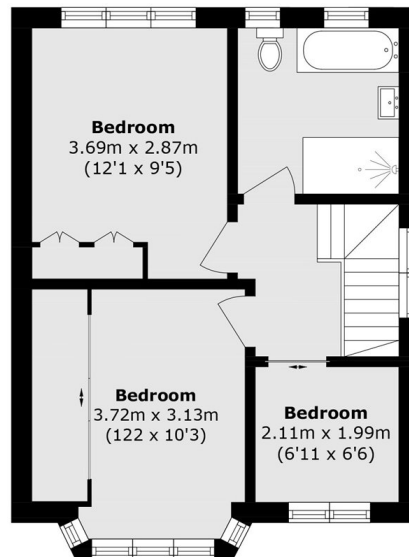
Avon Road, Sunbury-On-Thames, TW16



Ground Floor



Ground Floor



First Floor

Total area (approx.): 92.7 sq. m (997.8 sq. ft)

Garage area (approx.): 12.0 sq. m (129.1 sq. ft)