

SW19

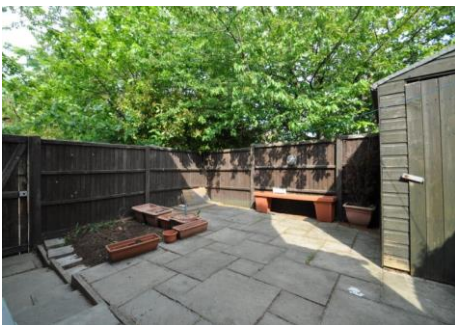
it's all in the postcode...



Hogarth Crescent
Colliers Wood

Monthly Rental Of £1,800

- Two bedroom house
- Minutes to Northern line
- Available 9th March
- Unfurnished
- Garden
- Parking
- Council tax Band C
- EPC Rating C



020 8544 2828

Wimbledon: Wimbledon Park: Colliers Wood

www.SW19.com

SW19 Estate Agents Ltd. Is registered in England & Wales No. 05508737

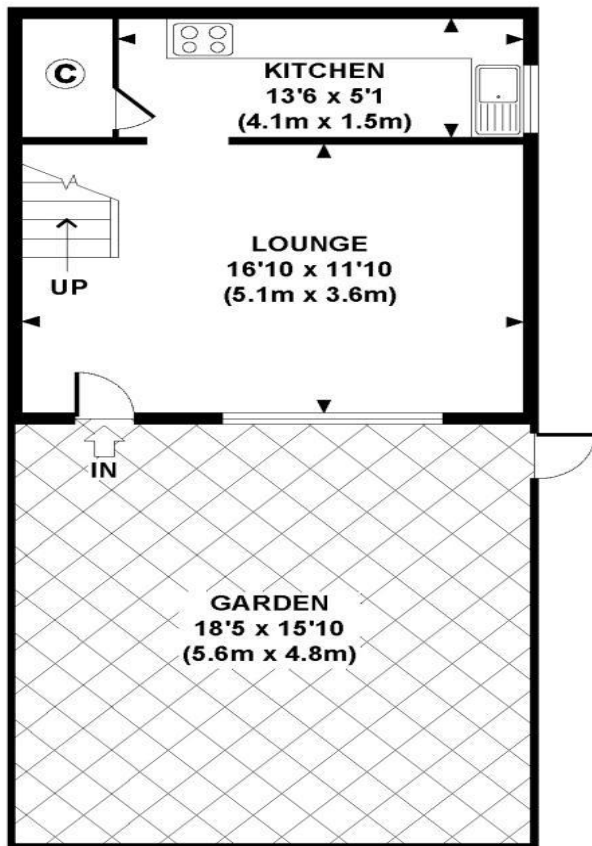
it's all in the postcode...

Two bedroom end of terrace house with private garden, study room, and off street parking. The property benefits from a fitted kitchen with appliances opening onto a good sized lounge with wooden floors. Bathroom with shower, Double glazed and gas central heating throughout. Unfurnished, Within close proximity to Colliers Wood tube (Northern line). Available from the 9th March.

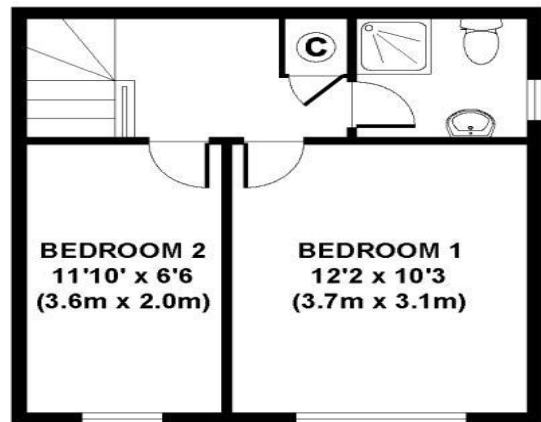


020 8544 2828
Wimbledon: Wimbledon Park: Colliers Wood
www.SW19.com
SW19 Estate Agents Ltd. Is registered in England & Wales No. 05508737

'it's all in the postcode...'



GROUND FLOOR
GROSS INTERNAL
FLOOR AREA 290 SQ FT



FIRST FLOOR
GROSS INTERNAL
FLOOR AREA 290 SQ FT



APPROX. GROSS INTERNAL FLOOR AREA 580 SQ FT / 54 SQ M
Copyright SW19

Floorplans are for identification and guideline purposes only, not to scale.
Compliant with RICS code of measuring practice.

These particulars are for guidance only and should not be relied upon as a statement or representation of fact. All measurements given are approximate only and should not be relied upon for ordering carpets, equipment etc. Purchasers should satisfy themselves by inspection or otherwise as to the accuracy of the statements contained within. Neither SW19 estate agents ltd or related companies or their employees can confirm structural conditions of the property or that any appliances or other facilities are in working order. Purchasers are strongly recommended to arrange their own survey.

020 8544 2828
Wimbledon: Wimbledon Park: Colliers Wood
www.SW19.com
SW19 Estate Agents Ltd. Is registered in England & Wales No. 05508737

'it's all in the postcode...'