



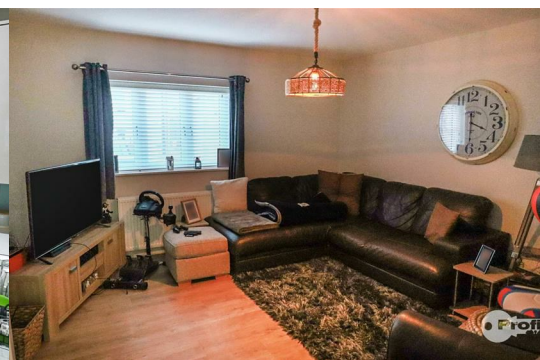
8 Lilleys Yard

, Hinckley, LE10 1RD

£1,100 Per Month



A show standard, traditional styled, semi detached house in an attractive courtyard location, within walking distance of Hinckley town centre. PVCu double glazed, gas central heating, condensing combi, 2 double bedrooms, both with en suite shower, modern fully fitted breakfast kitchen and allocated parking space. Water included in rent. **MUST BE VIEWED.**



Reception Hall 14'1" x 6'1" (4.30 x 1.85)

Double glazed composite door, radiator, laminate floor and staircase to first floor.

Guest Cloakroom 5'0" x 2'7" (1.52 x 0.78)

Corner wash hand basin, wc and laminate floor.

Luxury fitted breakfast Kitchen 14'2" x 6'7" (4.31 x 2.00)

Stainless steel sink unit, range of attractive base and wall units, 8 base, including pan drawer and 6 wall units, finished in high gloss, associated work surfaces, split level hob, electric fan assisted oven, extractor hood, integrated dishwasher, washer/ dryer, fitted fridge, fitted freezer, smoke detector and down lights to ceiling.

Lounge

First floor Landing 13'9" x 5'3" (4.20 x 1.60)

Side PVCu double glazed window, roof void access and smoke alarm.

Bedroom 1 (rear) 13'9" x 11'10" (4.20 x 3.61)

Twin double glazed french doors with Juliet balcony, PVCu double glazed windows, radiator and fitted wardrobe.

En suite Shower 8'5" x 2'11" (2.57 x 0.90)

Low flush wc, wash hand basin, fitted shower cubicle with chrome mixer shower, down lights to ceiling and extractor fan.

Bedroom 2 (front) 13'9" x 8'6" (4.20 x 2.60)

PVCu double glazed window and radiator.

En suite Shower (side) 9'6" x 2'11" (2.89 x 0.90)

Fitted shower with chrome mixer shower, wc, wash hand basin, extractor fan and radiator.

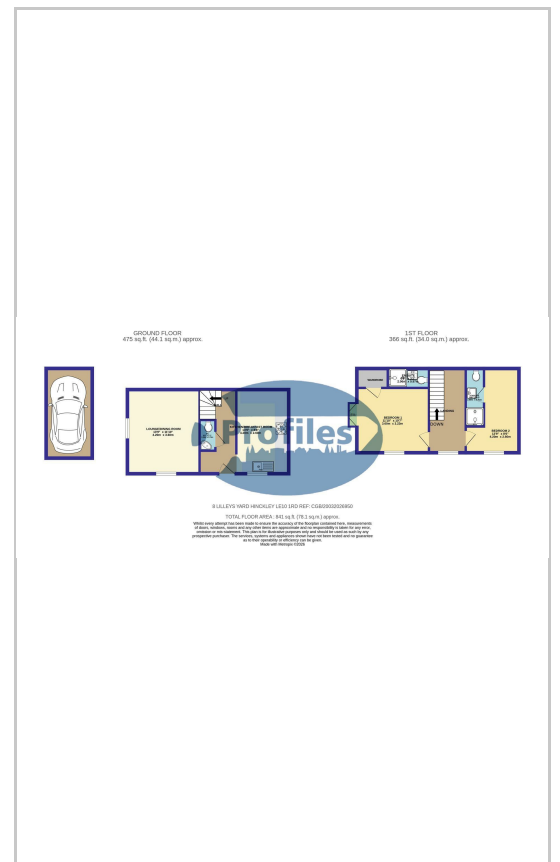
Outside

Allocated parking space.

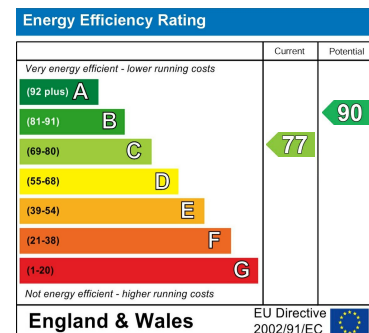
Area Map



Floor Plans



Energy Efficiency Graph



These particulars, whilst believed to be accurate are set out as a general outline only for guidance and do not constitute any part of an offer or contract. Intending purchasers should not rely on them as statements of representation of fact, but must satisfy themselves by inspection or otherwise as to their accuracy. No person in this firm's employment has the authority to make or give any representation or warranty in respect of the property.