



enfields

Enfields Hythe
21 Stars Parade
Hythe, Southampton
Hants, SO45 6AN
013 8084 0211
enfields@enfields.co.uk

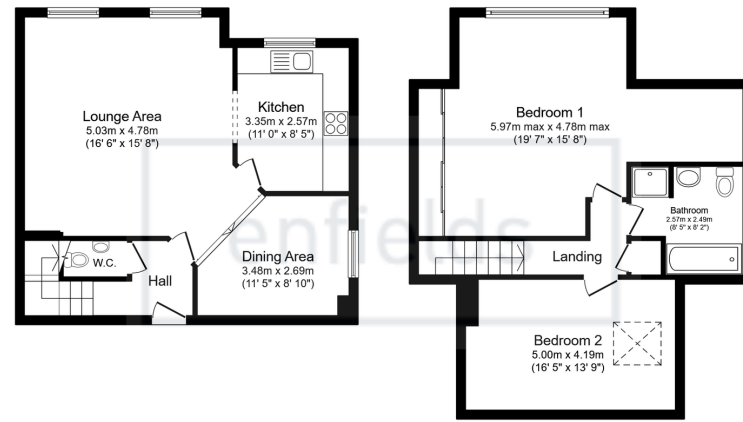
Flat 12, Carlisle Court, 42, St. Edmunds Road,
Guide Price £185,000

🛏 2 🚿 1 🚗 2



- Top-floor apartment
- One bathroom plus additional WC
- Recently refurbished and immaculately presented
- High ceilings with exposed beams
- Off-road parking and communal gardens
- Two well-proportioned bedrooms
- Semi open-plan living layout
- Modern kitchen with integrated appliances
- Skylights and large windows providing excellent natural light
- Quiet location with easy access to local amenities and transport links





Ground Floor
Floor area 48.8 sq.m. (525 sq.ft.)

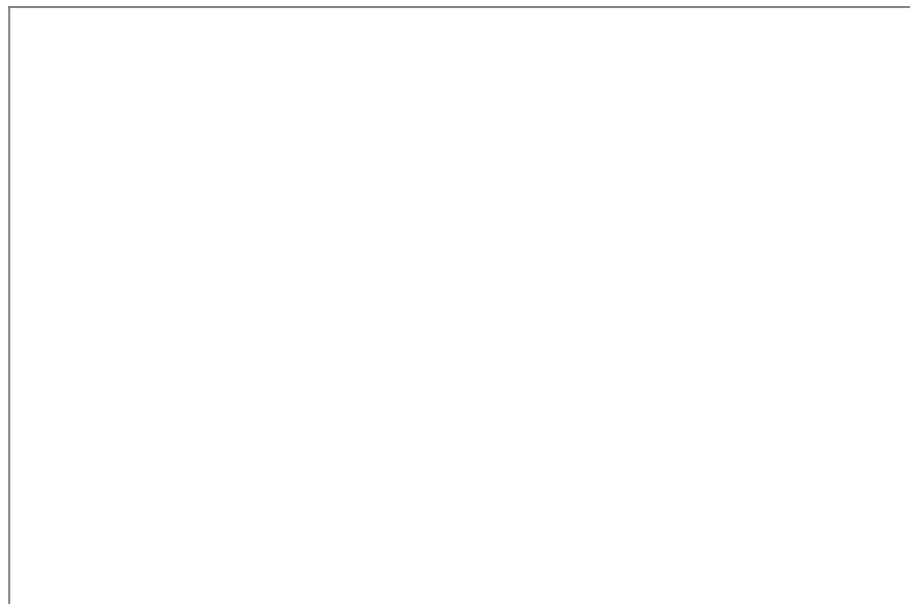
First Floor
Floor area 53.0 sq.m. (571 sq.ft.)

Total floor area: 101.8 sq.m. (1,096 sq.ft.)

This floor plan is for illustrative purposes only. It is not drawn to scale. Any measurements, floor areas (including any total floor area), openings and orientations are approximate. No details are guaranteed, they cannot be relied upon for any purpose and do not form any part of any agreement. No liability is taken for any error, omission or misstatement. A party must rely upon its own inspection(s). Powered by www.Propertybox.io



A beautifully presented top-floor two-bedroom apartment offering spacious, light-filled accommodation with modern finishes throughout. Situated in a quiet residential location, the property benefits from off-road parking and well-maintained communal gardens.



www.enfields-southampton.co.uk



It is Enfields policy to respect any sole agency currently in force and we would not be able to commence marketing until this has expired or been terminated. If you fail to terminate any previous agreement you could be liable for two sets of fees. Enfields Hythe is a trading name of YTF LTD Registered office: 345 Shirley Road, Southampton, Hampshire, England, SO15 3JD. Company Registration No: 10459987. VAT Registration No: 281 2975 81.

Enfields Lettings - Embley Management LTD T/A Enfields. Registered Address: 345 Shirley Road, Southampton, Hampshire, England, SO15 3JD. Company Registration No: 14847604. VAT Registration No: 439 8546 45.