



## TYERS STREET, SE11

£450,000

- Two bedrooms
- Separate eat-in kitchen
- Light-filled
- Modern finish
- Chain free
- Good transport links

@marshandparsons  
marshandparsons.co.uk

MARSH &  
PARSONS



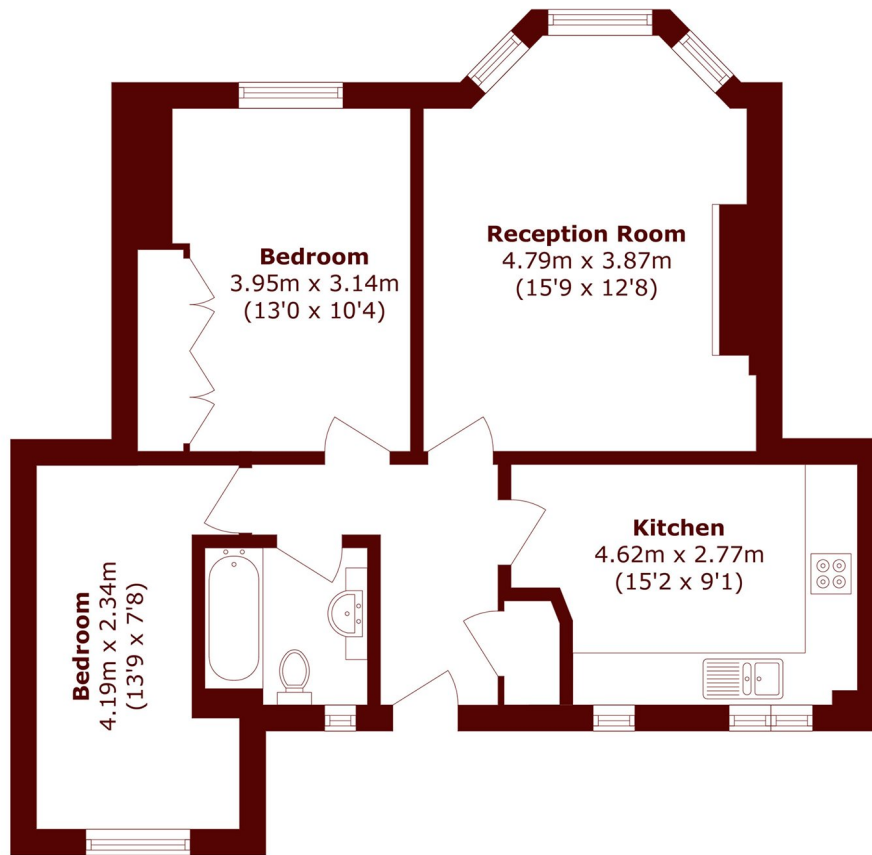
# ABOUT THE PROPERTY

Offers In Excess Of - Set on the top floor of a well maintained purpose built block with lift access, this beautifully presented two double bedroom apartment offers generous, well-balanced accommodation in an outstanding central location. The property comprises a bright separate eat-in kitchen, a spacious reception room, two well-proportioned double bedrooms, and a modern bathroom.

Perfectly positioned moments from Vauxhall Tube Station and the River Thames, the apartment offers excellent access to Waterloo, Kennington Village, South Bank, and Battersea. Vauxhall Station provides both Victoria Line and National Rail services, ensuring fast



# STEP INSIDE TYERS STREET



Total area (approx.): 60.5 sq. m (651.2 sq. ft)

**Kennington**  
020 7587 1533

Energy Rating: D We aim to make our particulars both accurate and reliable. However, they are not guaranteed; nor do they form part of an offer or contract. If you require clarification on any points then please contact us, especially if you're traveling some distance to view. Please note that appliances and heating systems have not been tested and therefore no warranties can be given as to their good working order

**MARSH &  
PARSONS**