



📍 12 The Pavilion, Roundwood Way, Corsham, Wiltshire, SN13 9GS

🏷️ Asking Price £250,000

A luxury first floor, one bedroomed pre-owned retirement apartment operated by Rangeford Villages.

- 1 Bed First Floor with Views
- Luxury Retirement Apartment
- En-suite & Balcony
- Concierge & Transport Service
- Restaurant & Coffee Shop
- Swimming Pool & Gym
- Rangeford Domiciliary Care

🏠 Leasehold

🏠 EPC Rating



A luxury first-floor, one-bedroomed pre-owned retirement apartment operated by Rangeford Villages. Situated in the Pavilion building, the hub of the village, this stunning 1-bedroom apartment has a large picture window in the living room leading to an east-facing balcony with amazing far-reaching views. The kitchen with integrated Bosch appliances including oven, hob, washer dryer, slimline dishwasher, fridge with freezer compartment and wall-mounted collapsible table. A large, carpeted bedroom with fitted double wardrobes and a Juliette balcony. En suite shower room with Porcelanosa sanitaryware, including a ceramic tiled floor with mosaic tiles in the shower area. Heated towel rail and illuminated mirror. Engineered light oak hardwood high-quality flooring with thermostatically controlled underfloor heating via a centralised system. Window dressings are also included in the sale. For further details, please contact Strakers or Wadswick Green Marketing Suite on 01225 584500

Situation

Set in the stunning Wiltshire countryside, in 25 beautifully landscaped grounds, Wadswick Green Retirement Village is a place where you can enjoy the comfort and convenience of living in a contemporary new village for people over 60. Here you can continue to live life to the full and if there's a time when you need more support, help is at hand.

Property Information

Council Tax band C

Mains Water etc...

Leasehold

EPC Rating: B

Rangeford Care

Rangeford Care, which is based within the village, provides outstanding domiciliary care plans to residents who require more support to manage their daily lives. Additional charges apply

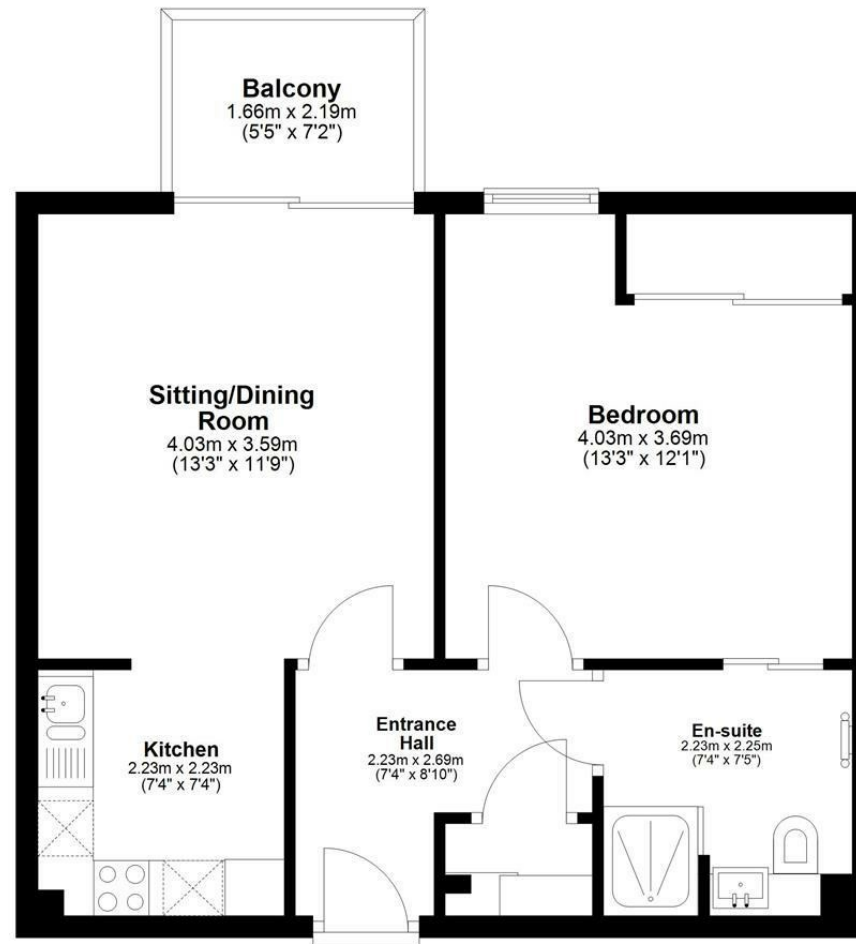
Disclaimer

The dimensions shown on the floor are approximate, and individual apartment dimensions will be confirmed upon an agreed sale. Please note, apart from the kitchen fittings described and window dressings, the apartment is sold unfurnished. Please note that certain photographs have been digitally modified using AI-generated furnishings and décor to assist with visualisation; actual property presentation may vary



First Floor

Approx. 46.8 sq. metres (504.3 sq. feet)
(excluding Balcony)



Total area: approx. 46.8 sq. metres (504.3 sq. feet)

Disclaimer: These particulars, whilst believed to be accurate are set out as a general outline only for guidance and do not constitute any part of an offer or contract. Intending purchasers should not rely on them as statements of representation of fact, but must satisfy themselves by inspection or otherwise as to their accuracy. No person in this firm's employment has the authority to make or give any representation or warranty in respect of the property. All measurements and distances are approximate only. Your home is at risk if you do not keep up repayments on a mortgage or other loan secured on it.