



Cripple Street, Maidstone, ME15 6BA
Price £650,000



NO FORWARD CHAINFIVE BEDROOM CHALET STYLE DETACHED HOME WITH APPROXIMATELY 180FT GARDEN

A substantial and versatile five-bedroom detached chalet-style home, ideally positioned within the sought-after village of Loose, perfect for growing families.

The ground floor offers a welcoming and spacious entrance hall, with two well-proportioned bedrooms to the front, ideal for multi-generational living or guest accommodation. To the rear, a superb open-plan kitchen/dining space forms the heart of the home, complemented by a separate utility room. The generous lounge provides a comfortable retreat, while an additional reception room offers excellent flexibility as a study, home office or playroom. A well-appointed ground floor bathroom with both bath and shower completes the layout.

Upstairs, there are three further bedrooms, each benefitting from built-in storage, alongside a second family bathroom, creating a practical and well-balanced arrangement.

Externally, the property boasts a large driveway providing ample off-road parking, in addition to a garage. The rear garden is a particular highlight, extending to approximately 180ft, featuring an expansive patio, established lawns, mature borders and trees—ideal for family life and entertaining.

Situated within easy walking distance of local amenities, including Sainsbury's Local, and with access to scenic bridle paths leading into the Loose Conservation area, this is a superb opportunity to secure a spacious and adaptable home in a highly desirable setting.



GROUND FLOOR

Hall 15'3" x 14'1" (4.66m x 4.30m)

Lounge 19'7" x 14'6" (5.98m x 4.42m)

Kitchen/Diner 19'10" x 12'11" (6.06m x 3.94m)

Office/Playroom 13'2" x 9'8" (4.03m x 2.96m)

Family Bathroom

Utility

Bedroom 4 13'0" x 12'0" (3.97m x 3.66m)

Bedroom 5 11'11" x 11'2" (3.65m x 3.42m)

FIRST FLOOR

Bedroom 1 14'4" x 11'5" (4.39m x 3.49m)

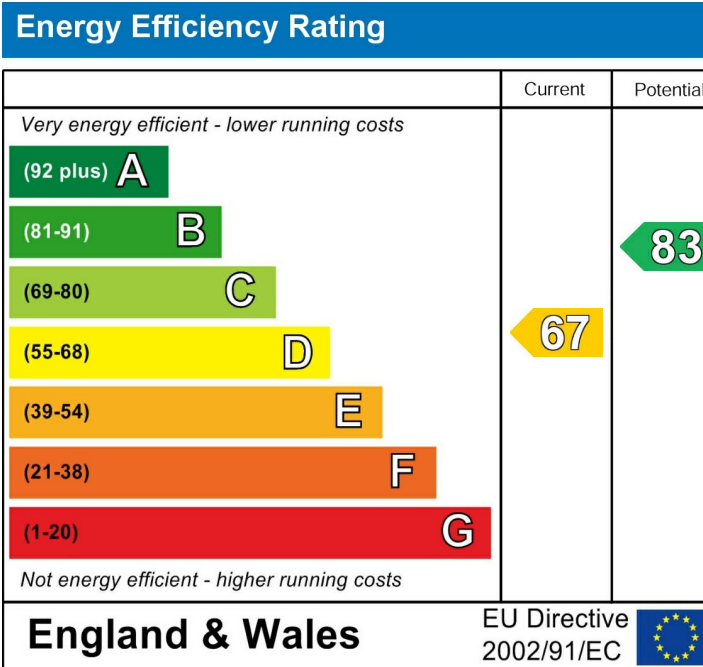
Bedroom 2 14'4" x 10'9" (4.39m x 3.30m)

Bedroom 3 13'10" x 9'10" (4.22m x 3.02m)

Shower Room

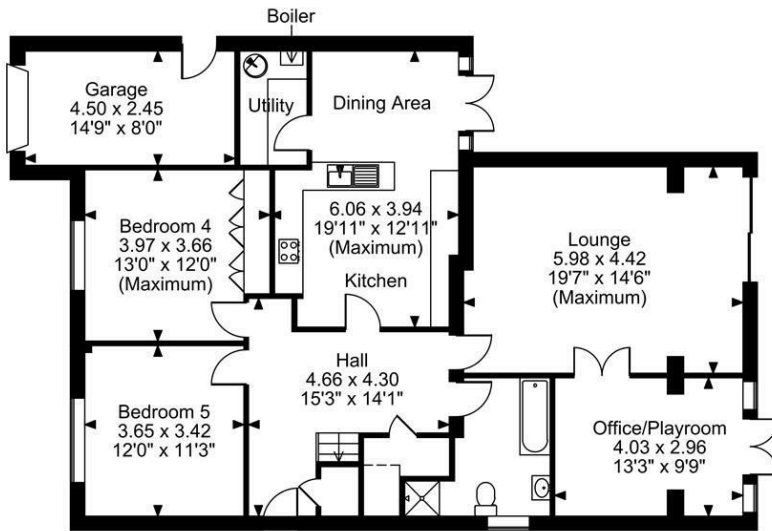
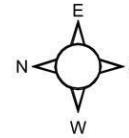
EXTERNALLY

Garage 14'9" x 8'0" (4.50m x 2.45m)

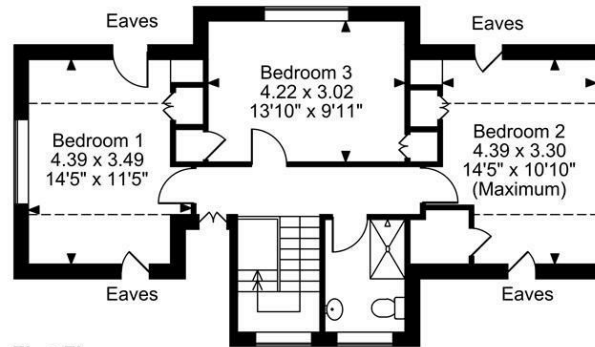


Page & Wells limited for themselves and for the vendors of this property whose agents they are give notice that: 1. These particulars do not constitute any part of, an offer or a contract. 2. All statements contained in these particulars as to this property are made without responsibility on the part of Page & Wells Limited or the Vendor. 3. None of the statements contained in these particulars as to the property is to be relied on as statements or representations of fact. 4. Any intending purchaser must satisfy himself by inspection or otherwise as to the correctness of each of the statements contained in these particulars. 5. The vendor does not make or give, and neither Page & Wells Limited nor any person in their employment has any authority to make or give any representation whatsoever in relation to this property. These particulars are supplied on the understanding that all negotiations are carried out throughout Page & Wells Limited. Properties with a reference prefixes EAA are those which Page & Wells Limited disclose an interest in accordance with the provisions of the Estates Agents Act 1979

Cripple Street, Maidstone, Kent
 Approximate Gross Internal Area
 Main House = 1760 Sq Ft/164 Sq M
 Garage = 119 Sq Ft/11 Sq M
 Total = 1879 Sq Ft/175 Sq M



Ground Floor



First Floor

FOR ILLUSTRATIVE PURPOSES ONLY - NOT TO SCALE
 The position & size of doors, windows, appliances and other features are approximate only.
 □ □ □ □ Denotes restricted head height
 © ehouse. Unauthorised reproduction prohibited. Drawing ref. dig/8686448/SAP

