



SIMPLE LIFE



SIMPLE LIFE



Carnet Close, Wigan, WN6

£1,235 Per Month

Welcome to Simple Life Homes at Canalside.

The Ellesmere UP is a stunning home built with your needs in mind. Downstairs there is a generous living room, hallway and WC. The rear of the property has a magnificent living/kitchen area with a range of contemporary fitted units with integrated appliances. The room has French windows opening onto and overlooking the rear garden as well as a series of skylights which flood the room with light – an ideal space for both family time and entertaining.

Unlike the regular Ellesmere, the Ellesmere UP includes an underpass, which means that there is a little more space upstairs. The first floor has a spacious family bathroom complete with both bath and shower, a master bedroom suite with shower room and fitted, mirrored wardrobes. You will also find two further well-proportioned bedrooms and a handy boiler/store cupboard just off the hallway.

The site benefits from close proximity (1.4 miles) to Wigan town centre and a good strategic location – less than 20 miles from both Manchester and Liverpool city centres with excellent connectivity via road and rail, being 3 miles from the M6/M58 interchange.

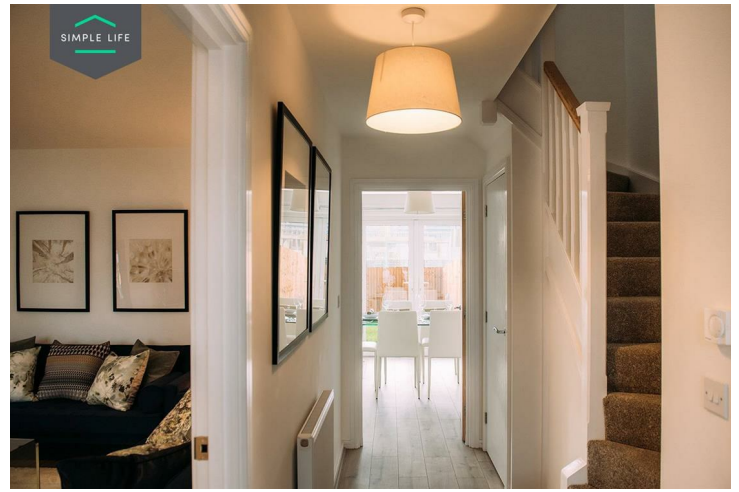
Ideal for families, there are 45 primary and secondary schools rated 'Good' or 'Outstanding' by Ofsted within 3 miles of the site.

Robin Retail & Leisure Park is one of the Borough's principle sport, leisure and retail complexes, featuring a multiplex cinema, major retail brands including Next and Matalan, as well as a football centre and gym. In addition, Wigan's main shopping centre The Grand Arcade includes many additional large stores such as M&S, Debenhams and TKMaxx.

To visit the site, use postcode WN6 7QF for Canal Street.

Deposit £1420
Holding deposit £280
Council tax: B
Unfurnished
Available 17th August 2026





Key Features

- Private Driveway
- Dishwasher
- Washing/Drying Machine
- Dark ash style worktop
- White blinds in bedrooms
- Security Alarm system
- Fridge Freezer
- Oven and hob
- Light wood or white interior doors
- Patio area in private back garden

Location

