



St. Johns Road, KT3

£425,000

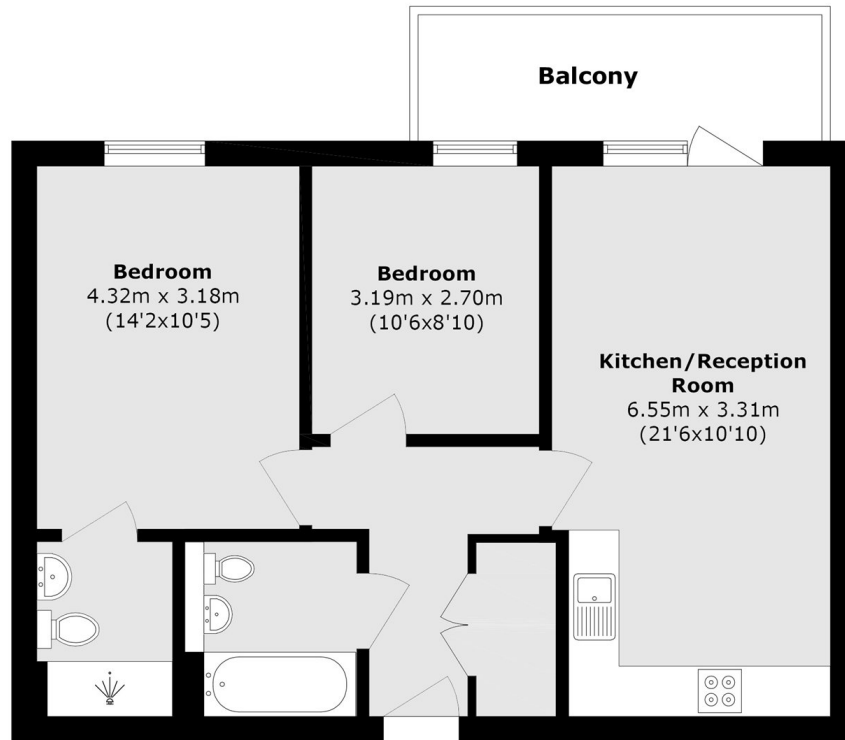
A fantastic light and bright two double bedroom, two bathroom apartment in the heart of New Malden. The property offers plenty of space in a beautiful modern setting. There are two good sized bedrooms, two bathrooms, a lovely private balcony and fully fitted modern open plan kitchen / reception room.

Pitsford House forms part of the exclusive Kingston East development moments away from a supermarket, post office, shops and restaurants, as well as a newly opened dental practice that forms part of the development. There are also bus stops close by and you are a mile to Kingston town centre and less than a mile to New Malden Station and High Street.

Features

- Two Double Bedrooms
- Two Bathrooms
- Modern Condition throughout
- Private Balcony
- Great Location
- Bright and Spacious

St. Johns Road, NEW MALDEN, KT3



Total area (approx.): 61.7 sq. m (664.1 sq. ft)

Balcony area (approx.): 7.2 sq. m (77.5 sq. ft)