

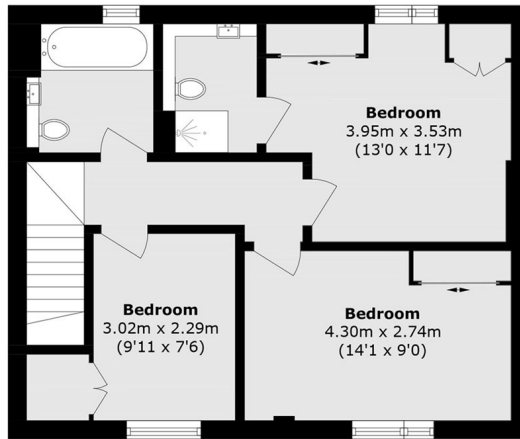


Fishers Way, HA0

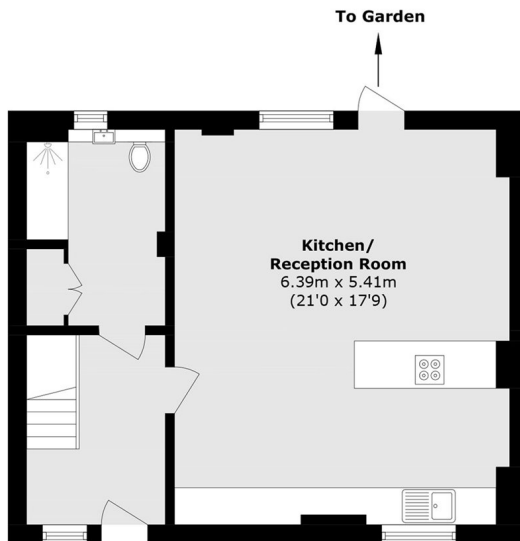
£762 pw (£3,300 pcm)

This maisonette has open plan living space on the ground floor leading out to a two tier garden. There are three double bedrooms and three bathrooms. Additionally the property has modern interior, wooden floors and ample of storage throughout.

Fishers Way is conveniently located close to Sudbury Town station and local amenities within the area.



First Floor



Ground Floor

Total (approx.): 99.9 sq. m (1075.3 sq. ft)

Robertson Smith & Kempson Ealing Lettings
1 The Broadway,
London, W5 2NT
020 8840 7885
ealinglettings@robertsonsmithandkempson.co.uk

Energy Rating: B. We aim to make our particulars both accurate and reliable. However they are not guaranteed; nor do they form part of an offer or contract. If you require clarification on any points then please contact us, especially if you're traveling some distance to view. Please note that appliances and heating systems have not been tested and therefore no warranties can be given as to their good working order.