

## Northbourne Road, SW4 £400,000

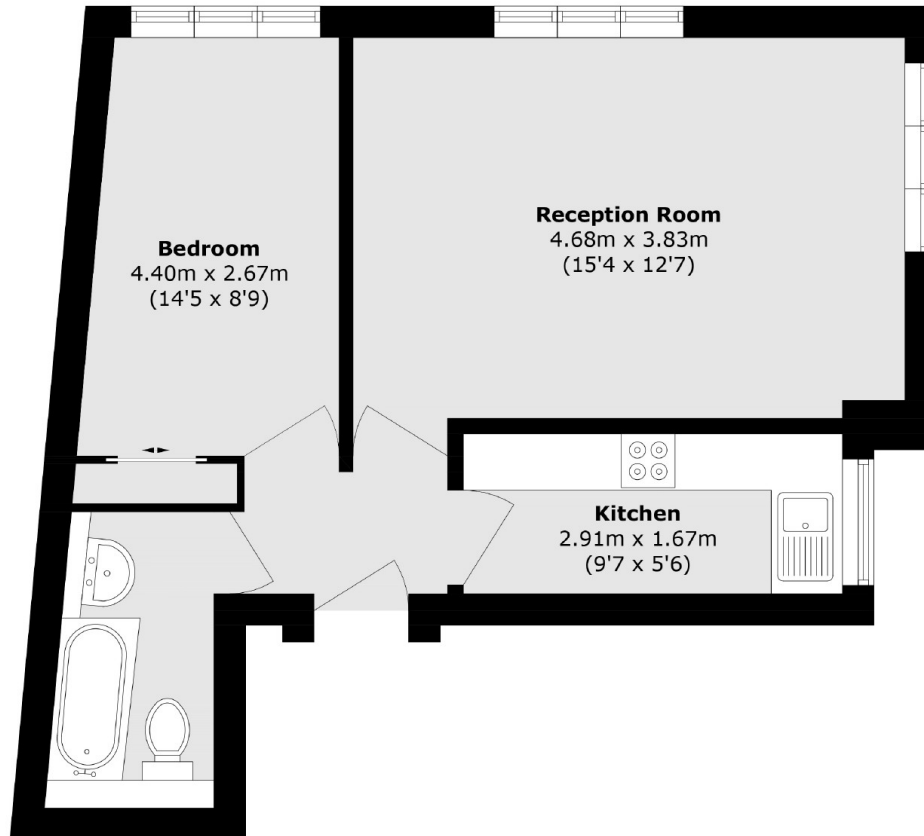
Presented in excellent condition throughout, this naturally bright and spacious apartment offers well-proportioned living in a desirable setting. The accommodation features a generous dual-aspect reception room with ample space for dining, a separate and fully equipped kitchen, a double bedroom with a fitted wardrobe, and a modern bathroom. Offered to the market chain-free and with a share of freehold.

Northbourne Road is a quiet, tree lined street close to Clapham Common and a short distance from the charming shops, bars and restaurants of the Abbeville Village. Clapham High Street (Overground) and Clapham Common (Underground) stations close by serving the West End and City.

### Features

- Lateral Apartment
- Large Reception Room
- Separate Kitchen
- Double Bedroom
- Chain Free
- Share Of Freehold

# Northbourne Road, London, SW4



Total area (approx.): 43.4 sq. m (467.1 sq. ft)