



---

4 Bed House

15 Derby Road  
Milford  
Belper  
DE56 0RA

£2,000 Per Calendar Month

---

**Fletcher**  
& Company

15 Derby Road  
Belper  
DE56 0RA



- Fully Furnished • Available Short Or Long Term • Executive Style Four Bedroom Property • Parking For Several Vehicles • En-Suite To Master Bedroom • Exceptional Quality Throughout • Large Rear Garden • High Specification Throughout • A Beautiful Property • Superb Location

Fully Furnished & Available Mid May 2026 - This spacious 4-bedroom house, available to let furnished, situated in the desirable location of Milford, Derbyshire.

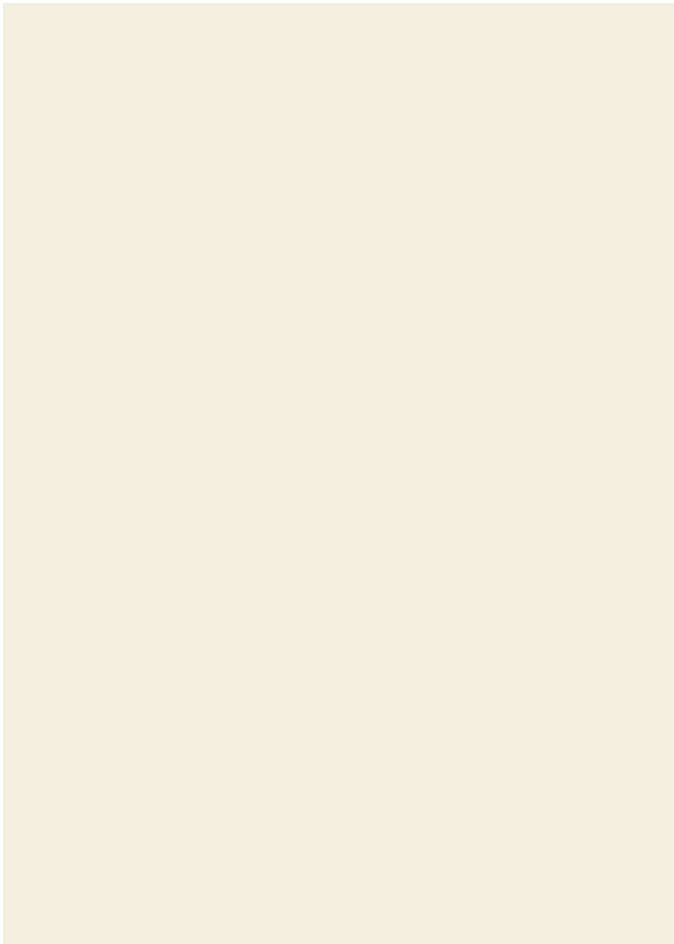
A superbly presented executive property that boasts high-specification throughout, furnished to a high standard and available short, or long term.

The property is spacious, light and offers a feeling of comfort and relaxation. In brief the property comprises; spacious hallway with downstairs w/c cloak room, separate living room, large open plan kitchen living diner with high end finish and integrated appliances, and a separate utility room. The first floor boast and good sized landing area with the master bedroom and en-suite, and three very good sized bedrooms, as well as a beautifully fitted family bathroom.

Outside; there is a large and private rear garden with a well placed patio area and a very good sized driveway that can easily accommodate 3 good sized vehicles.

The property is available Mid May 2026, on a short, or long term basis.

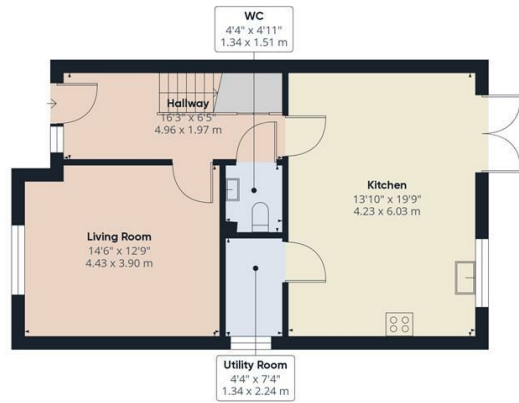




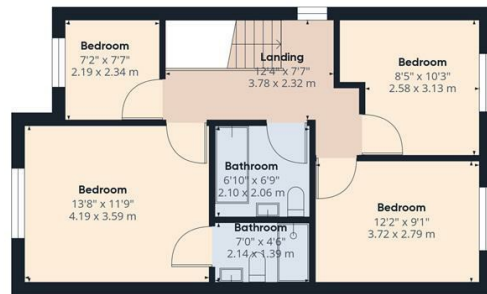
Duffield House  
 Town Street  
 Duffield  
 Derbyshire  
 DE56 4GD

T: 01332 843390

E: [duffield@fletcherandcompany.co.uk](mailto:duffield@fletcherandcompany.co.uk)  
[www.fletcherandcompany.co.uk](http://www.fletcherandcompany.co.uk)



Approximate total area<sup>(1)</sup>  
 1211.37 ft<sup>2</sup>  
 112.54 m<sup>2</sup>

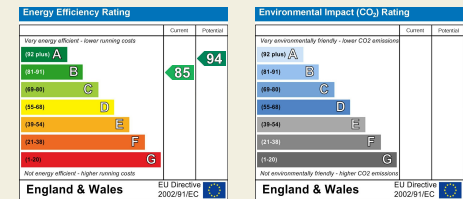


(1) Excluding balconies and terraces

While every attempt has been made to ensure accuracy, all measurements are approximate, not to scale. This floor plan is for illustrative purposes only.

Calculations are based on RICS IPMS 3C standard.

GIRAFFE360



These particulars do not constitute an offer or a contract neither do they form part of an offer or contract. The vendor does not make or give and Messrs. Fletcher & Company nor any person employed has any authority to make or give any representation or warranty, written or oral, in relation to this property. Whilst we endeavour to make our sales details accurate and reliable, if there is any point which is of particular importance to you, please contact the office and we will be pleased to check the information for you, particularly if contemplating travelling some distance to view the property. None of the services or appliances to the property have been tested and any prospective purchasers should satisfy themselves as to their adequacy prior to committing themselves to purchase.

**Fletcher**  
 & Company