



## LEWISHAM WAY, SE4

£300,000

Two double bedrooms

Top floor

Chain Free

Secure gated parking

Close to transport

Energy rating: D



# ABOUT THE PROPERTY

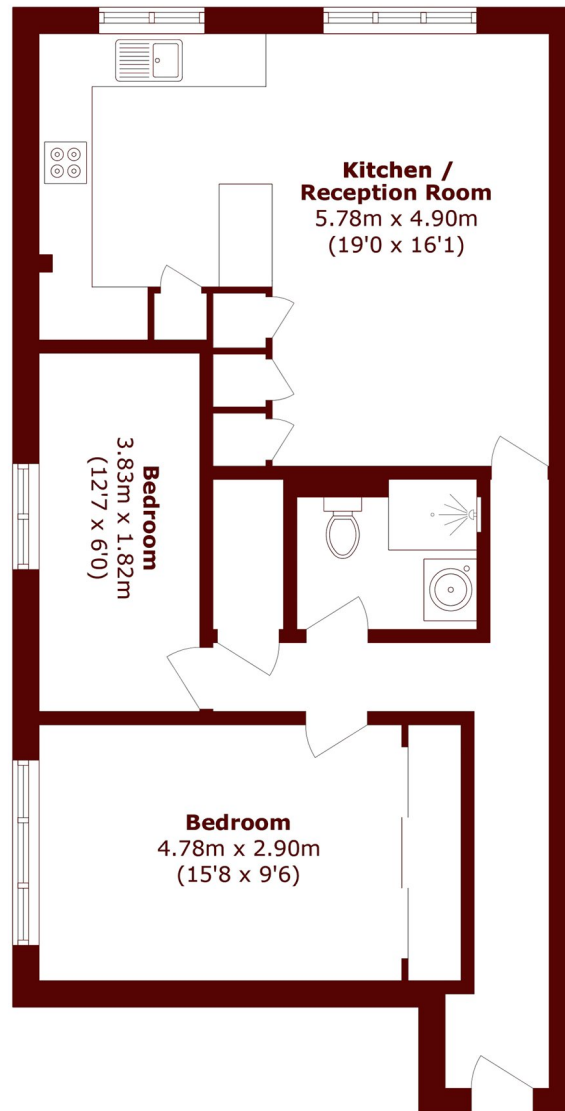
A bright two-bedroom top floor apartment at Leigh Court Lewisham Way. This flat offers accommodation comprising an open-plan reception and kitchen, two well-proportioned bedrooms and a modern bathroom.

Positioned on the top floor, the property enjoys elevated outlook, with peaceful private feel. Further benefits include secure gated parking and very ample storage.

Leigh Court is conveniently located for amenities, cafés and restaurants in Brockley, New Cross and Lewisham. Excellent transport links from St Johns, Brockley and Lewisham stations offer fast services into Central London, plus DLR connections to Canary Wharf and the City.



# STEP INSIDE LEWISHAM WAY



Total area (approx.): 63.4 sq. m (682.4 sq. ft)

**Brockley**  
020 8629 8164

Energy Rating: We aim to make our particulars both accurate and reliable. However, they are not guaranteed; nor do they form part of an offer or contract. If you require clarification on any points then please contact us, especially if you're traveling some distance to view. Please note that appliances and heating systems have not been tested and therefore no warranties can be given as to their good working order

**MARSH &  
PARSONS**