



Church Lane, London SW17 9PW

Welcome to **Church Lane, London**

Situated in a popular residential location, this well-presented two-bedroom home offers bright and practical living accommodation across two floors, making it an ideal first-time purchase, investment opportunity or downsize move.

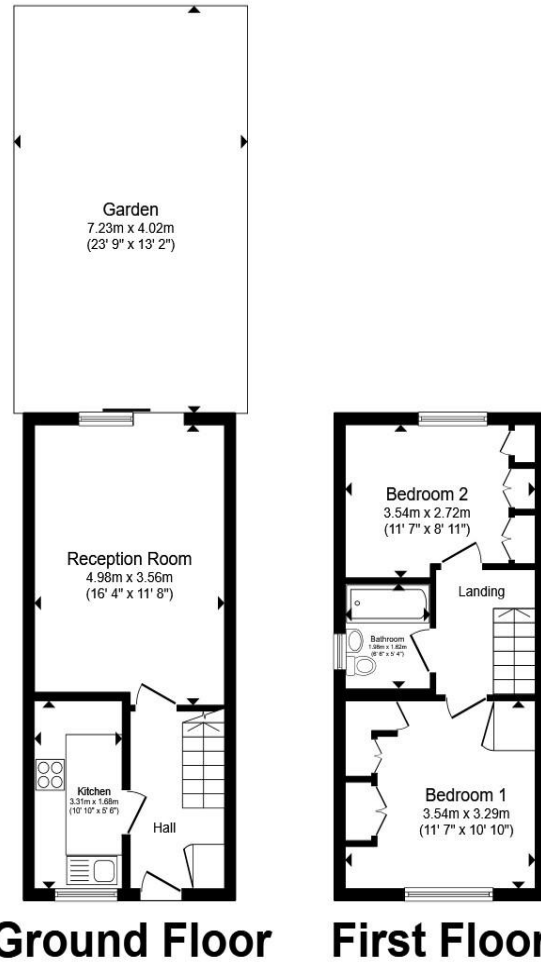
The ground floor comprises a welcoming entrance hall, a fitted kitchen and a spacious reception room measuring over 16ft, providing ample space for both relaxing and dining. Double doors/opening lead directly onto the impressive rear garden, which extends to approximately 73ft in length and offers excellent outdoor space for entertaining, gardening or family enjoyment.

To the first floor are two well-proportioned double bedrooms and a family bathroom accessed from the central landing.

Further benefits include good storage throughout, a well-balanced layout and excellent potential to personalise.

Conveniently located close to local amenities, transport links and schools, this property combines comfortable living with everyday convenience.





Total floor area 59.7 m² (642 sq.ft.) approx

This floor plan is for illustrative purposes only. It is not drawn to scale. Any measurements, floor areas (including any total floor area), openings and orientation are approximate. No details are guaranteed, they cannot be relied upon for any purpose and they do not form part of any agreement. No liability is taken for any error, omission or misstatement. A party must rely upon its own inspection(s). Powered by www.propertybox.io

Welcome to

Church Lane, London

- Two-bedroom house
- End of terrace
- Private front and rear garden
- Private parking
- CHAIN FREE!!!

Tenure: Freehold EPC Rating: Awaited
Council Tax Band: D

£600,000



Please note the marker reflects the
postcode not the actual property

check out more properties at barnardmarcus.co.uk



Property Ref:
TTG109132 - 0002

1. MONEY LAUNDERING REGULATIONS Intending purchasers will be asked to produce identification documentation at a later stage and we would ask for your co-operation in order that there is no delay in agreeing the sale. 2. These particulars do not constitute part or all of an offer or contract. 3. The measurements indicated are supplied for guidance only and as such must be considered incorrect. Potential buyers are advised to recheck measurements before committing to any expense. 4. We have not tested any apparatus, equipment, fixtures or services and it is in the buyers interest to check the working condition of any appliances. 5. Where an EPC, or a Home Report (Scotland only) is held for this property, it is available for inspection at the branch by appointment. If you require a printed version of a Home Report, you will need to pay a reasonable production charge reflecting printing and other costs. 6. We are not able to offer an opinion either written or verbal on the content of these reports and this must be obtained from your legal representative. 7. Whilst we take care in preparing these reports, a buyer should ensure that his/her legal representative confirms as soon as possible all matters relating to title including the extent and boundaries of the property and other important matters before exchange of contracts.

Barnard Marcus is a trading name of Sequence (UK) Limited which is registered in England and Wales under company number 4268443, Registered Office is Cumbria House, 16-20 Hockliffe Street, Leighton Buzzard, Bedfordshire, LU7 1GN. VAT Registration Number is 500 2481 05.



020 8682 1161



Tooting@barnardmarcus.co.uk



248 Upper Tooting Road, Tooting, London,
SW17 7EX



barnardmarcus.co.uk