



Guide Price
£475,000

Freehold

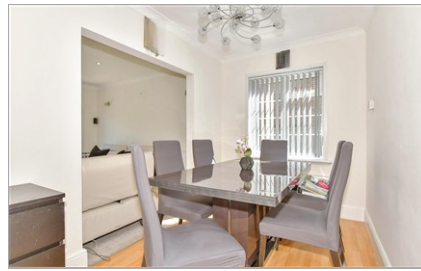
4x  2x  2x 

**Stangate Road, Strood,
Rochester, Kent, ME2**

OVER 60?

Secure this property
for up to **59% less!**

Wards
Helping you move forwards



Main features

- **4 bedroom semi-detached house in a sought after location**
- **En-suite shower room and family bathroom that has been recently renovated**
- **Walking distance to Strood Academy**
- **Summer house in the rear garden**
- **Easy access to A2 and Bluewater Shopping Centre**

Accommodation

GROUND FLOOR

Entrance Hall/Utility Room : 8'9 x 7'1 (2.67m x 2.16m)
 Cloakroom
 Lounge : 19'11 x 13'1 (6.07m x 3.99m)
 Dining Room : 10'2 x 6'11 (3.10m x 2.11m)
 Kitchen : 10'9 x 10'8 (3.28m x 3.25m)

FIRST FLOOR

Landing
 Bedroom 2: 12'5 x 10'10 (3.79m x 3.30m)
 Bedroom 3: 11'11 x 10'5 (3.63m x 3.18m)
 Bedroom 4: 12'5 x 8'10 (3.79m x 2.69m)
 Bathroom : 7'8 x 5'9 (2.34m x 1.75m)

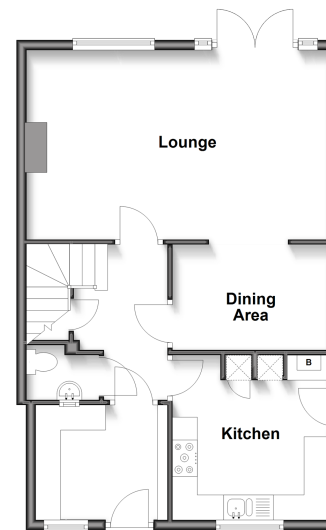
SECOND FLOOR

Landing
 Bedroom 1: 15'11 x 12'1 (4.85m x 3.69m)
 En-Suite Shower Room : 7'0 x 6'11 (2.14m x 2.11m)

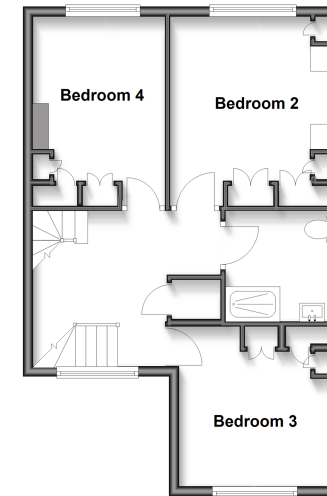
OUTSIDE

Front Garden
 Rear Garden
 Driveway
 Garage

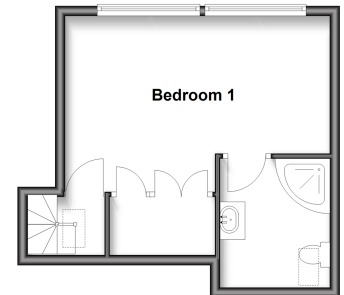
Ground Floor
 Approx. 56.6 sq. metres (609.0 sq. feet)



First Floor
 Approx. 50.0 sq. metres (538.2 sq. feet)



Second Floor
 Approx. 27.8 sq. metres (298.7 sq. feet)



Call Strood - 01634 716597 ■ wardsokent.co.uk

■ Through a Homewise Home For Life Plan people aged 60+ can secure this property for up to 59% less, by purchasing a Lifetime Lease



11826325/20260506/CM/CM