



PCM

£6,000 PCM

Princelet Street

London, E1 6QH

Like a vintage wine this 3 bedroom Huguenot house located on the prestigious Princelet Street is rare and highly desired.

On the best street in the area and with it's recent and full luxurious refurbishment it will no doubt be one of the best homes in the street!

Over 5 floors (plus basement) and over 1,800 sq.ft., a bespoke hand-made kitchen and conservatory sit on the ground floor with an area for dining and fitted with Bosche appliances and a Rangemaster cooker and hood, the living room is found on the second floor with it's feature fireplace and traditional wall paneling finished to retain a unique contemporary feel that runs throughout the whole property. The three floors above each have one double bedroom with en-suite shower rooms finished in marble and top of the line sanitary ware and Phillippe Starck fittings.

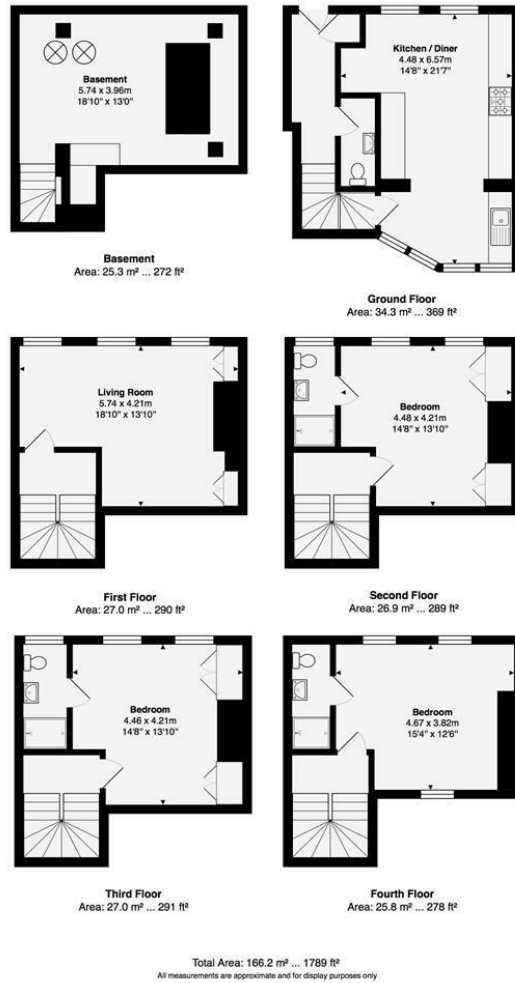
No expense has been spared and the property has been re-built from top to bottom with careful consideration in keeping it's period roots intact with its sympathetic facelift. All finishes, fixtures and fittings are top of the line and the care to detail is second to none.

The top floor benefits from an unequalled roof terrace, perfect for that evening glass of wine or weekend BBQ's.

The location should really need no explanation but if you are new to the area then the City can be found less than a 5 minute walk away with Liverpool Street and Shoreditch less than a 10 minute walk, with all the restaurants, cafe's and bars on your doorstep.







Energy Efficiency Rating		Current	Potential
Very energy efficient - lower running costs			
(92 plus) A			
(81-91) B			
(69-80) C			73
(55-68) D		55	
(39-54) E			
(21-38) F			
(1-20) G			
Not energy efficient - higher running costs			
England & Wales		EU Directive 2002/91/EC	

Agents Note: Whilst every care has been taken to prepare these particulars, they are for guidance purposes only. All measurements are approximate and are for general guidance purposes only and whilst every care has been taken to ensure their accuracy, they should not be relied upon and potential buyers/tenants are advised to recheck the measurements

OFFICE ADDRESS
88 Cheshire Street
London
E2 6EH

OFFICE DETAILS
0207 739 6969
info@peachproperties.com
www.peachproperties.com