



jordan fishwick

Southwood Close Marple Stockport

Southwood Close Marple Stockport SK6 7PN

Per Calendar Month £1,750



The Property

*** AVAILABLE EARLY APRIL *** UNFURNISHED *** Situated on a small popular development adjoining the Middlewood Way in Marple, a superbly presented, brick built, three bedroom end town house. Accommodation arranged over three floors including: entrance hall, living room, fitted dining kitchen, wc, two first floor bedrooms, family bathroom with separate shower, second floor master bedroom with fitted wardrobe and en-suite shower room. Private gardens with decked patio, driveway parking for multiple cars and a single garage. Neutral decor throughout, pvc double glazing and gas central heating. Viewing highly recommended.




- Cul-De-Sac Position
- Modern End Townhouse
- Three Bedrooms
- Private Enclosed Gardens
- Parking for multiple cars
- Single Garage
- Family Bathroom and En-Suite Shower Room
- Well Presented Throughout
- Available April
- Un-Furnished

Postcode SK6 7PN

EPC Rating C

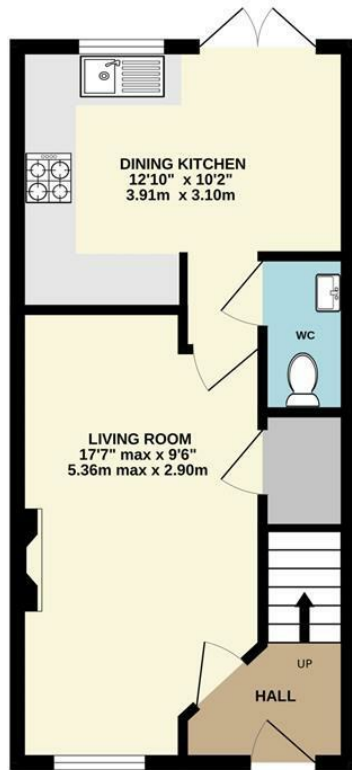
Local Authority Stockport

Council Tax D

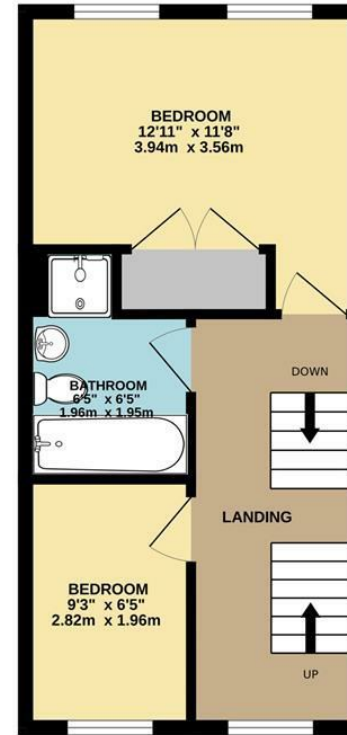
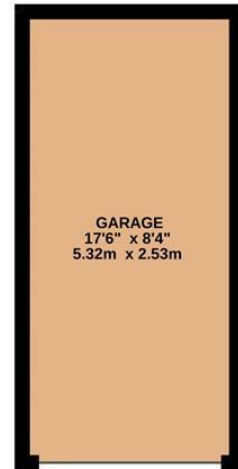
Energy Efficiency Rating		Current	Potential
Very energy efficient - lower running costs			
(92 plus) A			
(81-91) B			87
(69-80) C		74	
(55-68) D			
(39-54) E			
(21-38) F			
(1-20) G			
Not energy efficient - higher running costs			
England & Wales		EU Directive 2002/91/EC 	



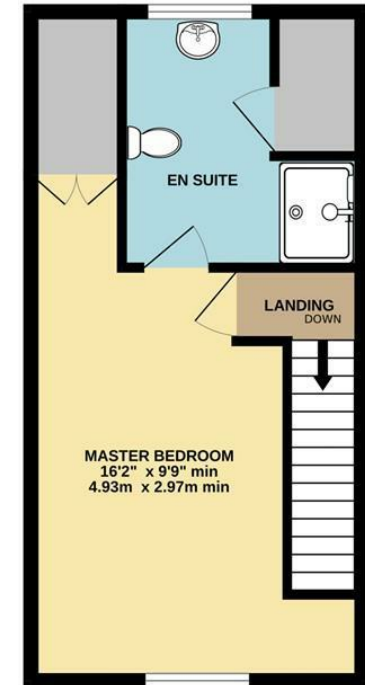
GROUND FLOOR



1ST FLOOR



2ND FLOOR



Whilst every attempt has been made to ensure the accuracy of the floorplan contained here, measurements of doors, windows, rooms and any other items are approximate and no responsibility is taken for any error, omission or mis-statement. This plan is for illustrative purposes only and should be used as such by any prospective purchaser. The services, systems and appliances shown have not been tested and no guarantee as to their operability or efficiency can be given.
Made with Metropix ©2024



These particulars are believed to be accurate but they are not guaranteed and do not form a contract. Neither Jordan Fishwick nor the vendor or lessor accept any responsibility in respect of these particulars, which are not intended to be statements or representations of fact and any intending purchaser or lessee must satisfy himself by inspection or otherwise as to the correctness of each of the statements contained in these particulars. Any floorplans on this brochure are for illustrative purposes only and are not necessarily to scale.

Offices at: Chorlton, Didsbury, Disley, Hale, Glossop, Macclesfield, Manchester Deansgate, Manchester Whitworth Street, New Mills, Sale, Wilmslow and Withington

14 Market St, Disley, Cheshire, Stockport SK12 2AA

01663 767878

disley@jordanfishwick.co.uk

www.jordanfishwick.co.uk