



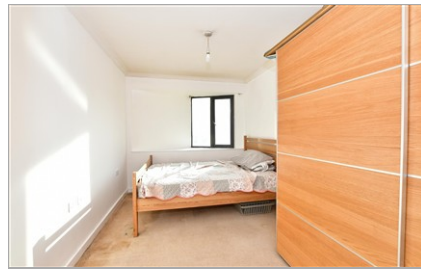
Guide Price
£90,000

Leasehold

2x  1x  1x 

**Roding Court, Mill Road,
Ilford, Essex, IG1**

 **DOUGLAS
ALLEN**
Helping you move forwards



Main features

- Well maintained first floor apartment
- 30% shared ownership
- Off street parking & close to local bus links
- Walking distance to Ilford station & Elizabeth Line
- Open plan living area
- Ideal for for first time buyers
- CHAIN FREE

Accommodation

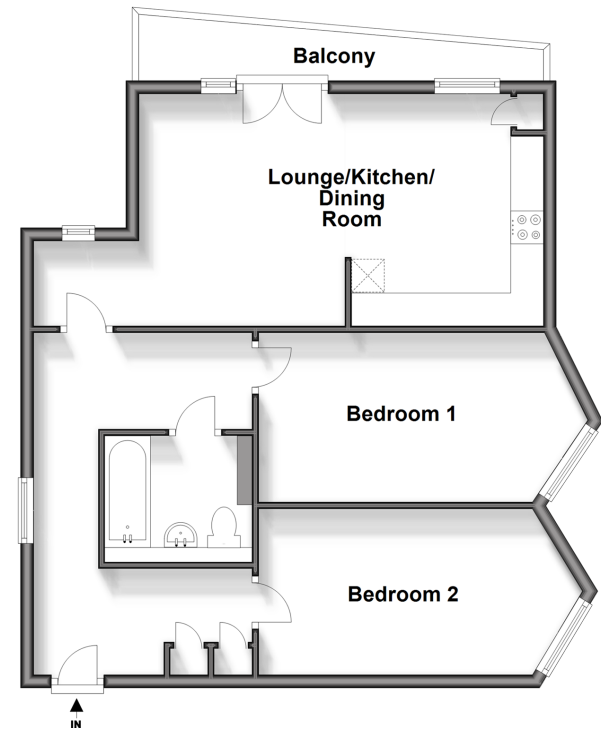
FIRST FLOOR

- Entrance Hall
- Lounge/Kitchen/Dining Room: 11'5 x 10'3 (3.48m x 3.13m)
- Kitchen: 12'1 x 9'5 (3.69m x 2.87m)
- Bedroom 1: 14'6 x 8'6 (4.42m x 2.59m)
- Bedroom 2: 13'9 x 8'3 (4.19m x 2.52m)
- Bathroom
- Balcony

OUTSIDE

- Off Street Parking

First Floor
Approx. 66.6 sq. metres (717.4 sq. feet)



Call Ilford - 020 8518 0044 ■ douglasallen.co.uk

■ Legal advice should be taken to verify fixtures/fittings, planning, alterations and/or lease details

■ Appliances & services are untested, dimensions are approximate and floor plans are not to scale



52016678/20260131/MH/NK