



## Hamlet Gardens, W6

£350,000

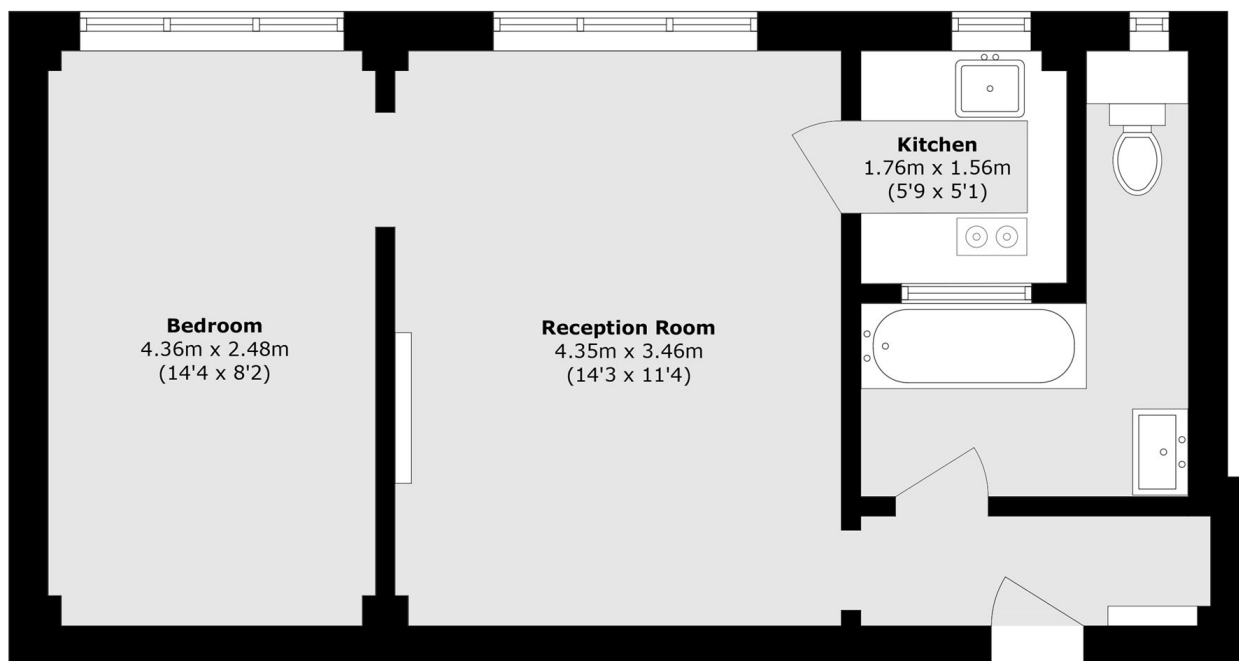
A spacious one bedroom apartment in the popular Kings Court development.

Hamlet Gardens is within a short walk of both Ravenscourt Park and Stamford Brook tube station. Hammersmith Broadway offers further transport links and there are plenty of amenities available.

### Features

- One Bedroom
- Private Development
- No Onward Chain
- Hot Water/Heating Inc
- Lift
- Porter and CCTV

# Hamlet Gardens, London, W6



Total area (approx.): 37.8 sq. m (406.8 sq. ft)