

## Greyhound Parade, Earlsfield, SW17

£600,000

🛏️ 2 🍷 1 🚗 1



PLEASE QUOTE JW0326 - Stunning two double bedroom split level maisonette (947 Sq.Ft) with private all-weather surface garden, superbly situated moments from shops and amenities, as well as transport links from nearby Earlsfield, Tooting, Haydon's Road and Wimbledon Park. The property offers stylishly appointed, bright and spacious accommodation laid out over two floors, finished to a fantastic standard with neutral decor and sleek interiors throughout - the perfect blend of comfort and convenience for a modern lifestyle. Features include a large open plan reception/kitchen/diner, upstairs bathroom, downstairs guest WC, ample inbuilt storage, quality floor coverings, gas central heating and double glazing.

## Key Features

- Stunning Two Double Bedroom Split Level Maisonette (947 Sq.Ft)
- Brand New Development
- Fantastic Garratt Park/Earlsfield Location
- Stylish Interiors and Quality Finish
- Large Open Plan Reception/Kitchen/Diner
- Private All-Weather Surface Garden
- Allocated Parking
- 999 Year Lease
- Close to Excellent Transport Links, Schools and Amenities
- PLEASE QUOTE JW0326

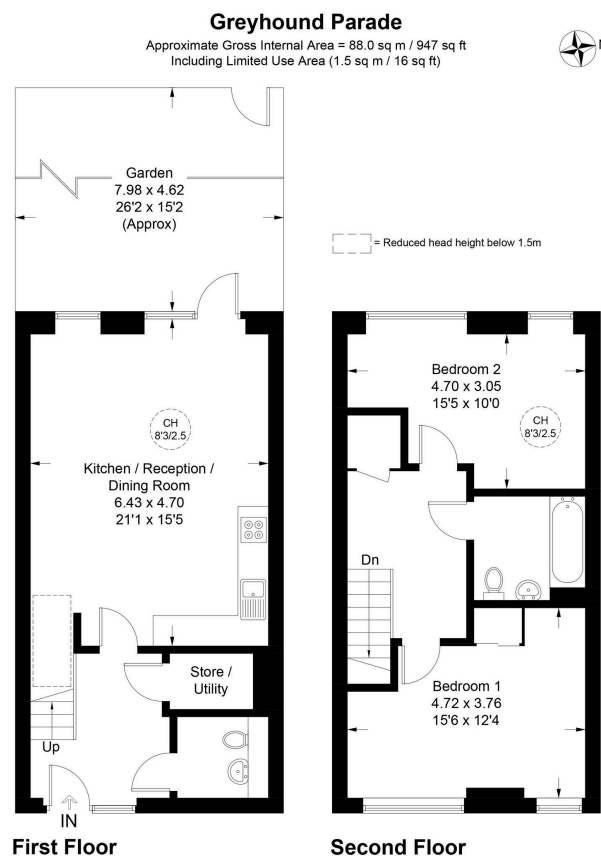


Illustration for identification purposes only, not for valuation purposes, measurements are approximate, not to scale.