



39 Hebden Chase, Leeds

Asking Price £85,000

39 Hebden Chase

Leeds

114-year lease, incredibly low £88/quarter fees, and a massive 10.2% potential yield for just £85k. Whether you're looking to invest or take your first step on the ladder, this low-cost, high-return 1-bed flat is an absolute no-brainer.

Council Tax band: A

Tenure: Leasehold

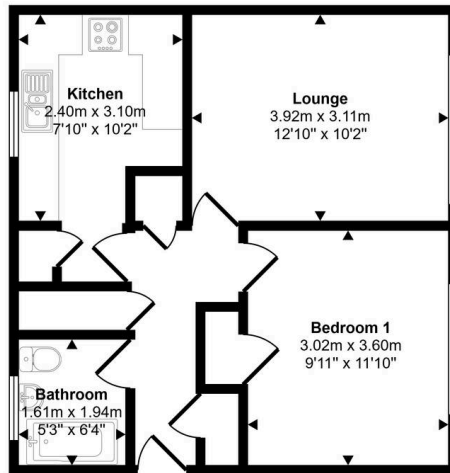
EPC Energy Efficiency Rating: C

EPC Environmental Impact Rating: C

- Low Ground Rent and Service Charge
- Chain Free Sale
- Large Kitchen Space
- Decent Sized Double Bedroom
- Fabulous Rental Potential
- Paved Outside Space

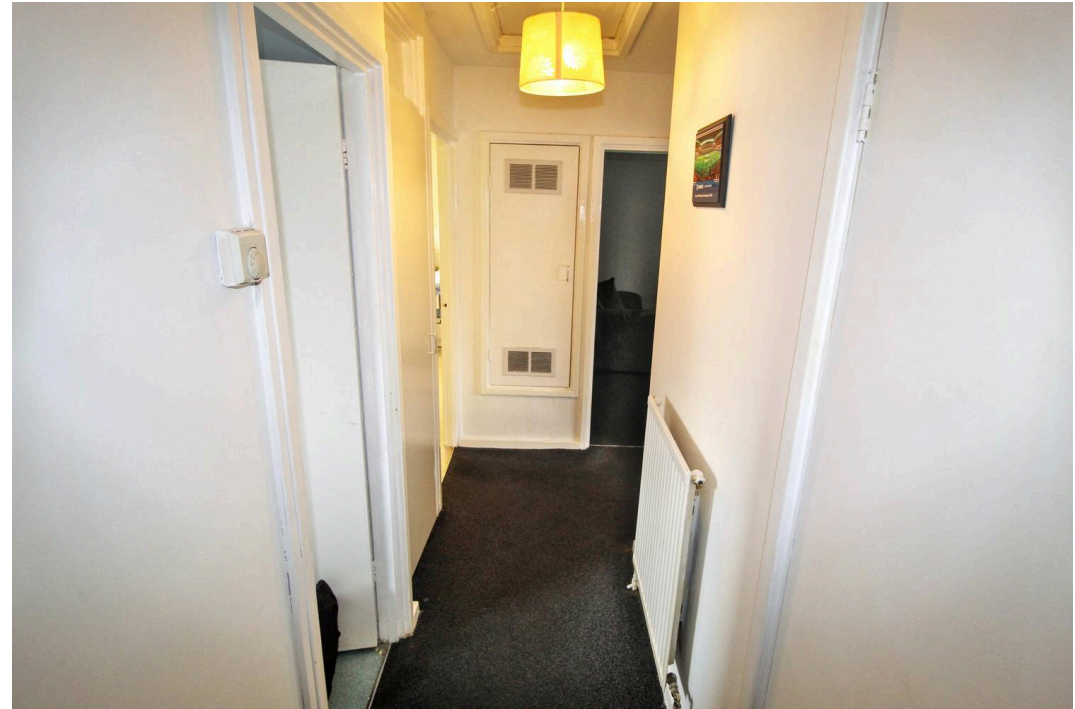


Approx Gross Internal Area
44 sq m / 477 sq ft



Floorplan

Whilst every attempt has been made to ensure the accuracy of the floor plan contained here, measurements of doors, windows, rooms and any other items are approximate and no responsibility is taken for any error, omission, or mis-statement. The measurements should not be relied upon for valuation, transaction and/or funding purposes. This plan is for illustrative purposes only and should be used as such by any prospective purchaser or tenant.





Aspire Estates

Aspire Properties, Wira Business Park Ring Road - LS16 6EB

0113 8875079

estatesales@aspirepropertygroup.co.uk

www.aspirepropertygroup.co.uk/