



25 Romney Walk

Bedford | Bedfordshire | MK41 7LU



25 Romney Walk

Bedford | Bedfordshire | MK41 7LU

Price £350,000

Occupying an enviable elevated position with far-reaching views across Bedford, this beautifully presented three-bedroom semi-detached home enjoys a wonderful setting overlooking an attractive green space to the front.

Key Features

Elevated position with Bedford views

Open green space to the front

Three-bedroom semi-detached home

Spacious living room

Refitted kitchen with quartz worktops

Principal bedroom with fitted wardrobes

Private rear garden and garage

Gas central heating and PVCu double glazed windows

- Council Tax Band: C
- Energy Efficiency Rating: D





The current owners have extensively renovated and improved the property, creating a stylish and contemporary home that is ready to move straight into. The ground floor has been particularly transformed, offering bright and versatile living accommodation.

Upon entering, you are welcomed into a spacious living room, where large windows frame the open green space beyond and allow natural light to flood the room. To the rear, the impressive kitchen/diner forms the true hub of the home. Recently upgraded within the last year, the kitchen features quality fitted appliances, quartz worktops and ample storage, while patio doors provide direct access to the private rear garden, creating an ideal space for both everyday family life and entertaining.

Upstairs, there are three well-proportioned bedrooms, including a generous principal bedroom with fitted wardrobes. The accommodation is completed by a modern family bathroom finished to a high standard.

Outside, the private rear garden has been thoughtfully landscaped and is well established with a variety of mature shrubs and trees, including two attractive holly trees, providing a peaceful and secluded outdoor space. A garage located to the rear offers convenient access to off-road parking.

Further benefits include a combi boiler installed in 2024, a full re-wire, and a hard-wired CCTV system, providing both modern efficiency and peace of mind.

This exceptional home combines a sought-after position, stunning views and high-quality improvements throughout, making it an ideal choice for families and professionals alike.

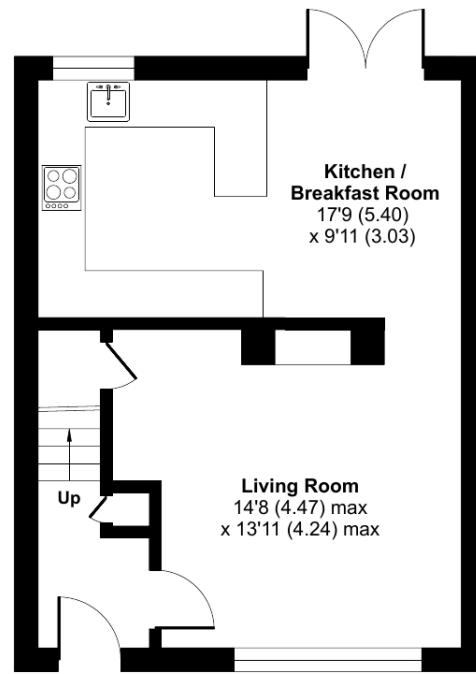
The property is located on Romney Walk, which is a very convenient location close to Bedford Park and within walking distance of the town centre facilities. Local shops, schools and the mainline railway station are also within easy reach.



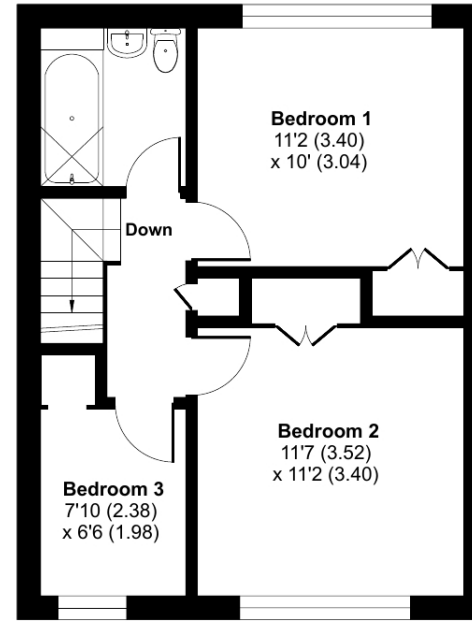
Romney Walk, Bedford, MK41

Approximate Area = 842 sq ft / 78.2 sq m (excludes garage)

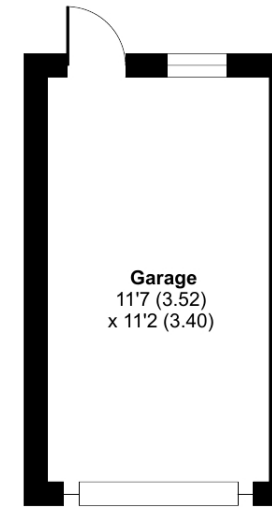
For identification only - Not to scale



GROUND FLOOR



FIRST FLOOR



 Floor plan produced in accordance with RICS Property Measurement 2nd Edition, Incorporating International Property Measurement Standards (IPMS2 Residential). © nchecon 2026. Produced for Lane & Holmes. REF: 1472656

01234 327744 | sales@laneandholmes.co.uk | www.laneandholmes.co.uk | 66-68 St Loyes Street, Bedford, Bedfordshire, MK40 1EZ

Agents Notes: The agent has not tested any apparatus, equipment, fixtures & fittings or services and so cannot verify that they are in working order or fit for the purpose. A buyer is advised to obtain verification from their solicitor or surveyor. All photographs shown are for illustration only and may depict items that are not for sale or included in the sale of the property. Please note that we have not checked the situation with regards to planning consents, building regulation consents and any other relevant consent relating to this property and therefore, any interested applicant should carry out their own enquiries with the appropriate authorities. All measurements are approximate and for guidance only. The particulars do not form part of any contract and all properties are offered subject to contract.

