



**Fulmer Fields, Havant Road, Hayling Island PO11 0PB**

**welcome to**

## **Fulmer Fields Havant Road, Hayling Island**

Lounge with dining area and kitchen, three bedrooms, en-suite shower room plus additional shower room. Immaculate inside, outside deck for relaxing and parking space.

### **Entrance**

Into hall with doors to:

### **Sitting Room Area**

Carpet flooring to sitting room area. Double glazed double doors leading to decking double glazed windows. Feature fireplace and radiator.

### **Dining Area**

Laminate flooring, space for table and chairs.

### **Kitchen Area**

Double glazed windows and sky light. Vinyl flooring, radiator. Range of units with work surface over, incorporating one and a half bowl sink unit with mixer tap over. Built-in oven, grill and microwave. Gas hob with extractor hood over.

### **Bedroom One**

Double glazed window, carpet flooring, radiator. Plug sockets and usb points. Door to en-suite.

### **En-Suite Shower Room**

Double glazed window. Shower cubicle, low level WC and wash hand basin set over vanity unit.

### **Bedroom Two**

Double glazed window. Built-in storage, carpet flooring.

### **Bedroom Three**

Double glazed window. Built-in storage, carpet flooring.

### **Shower Room**

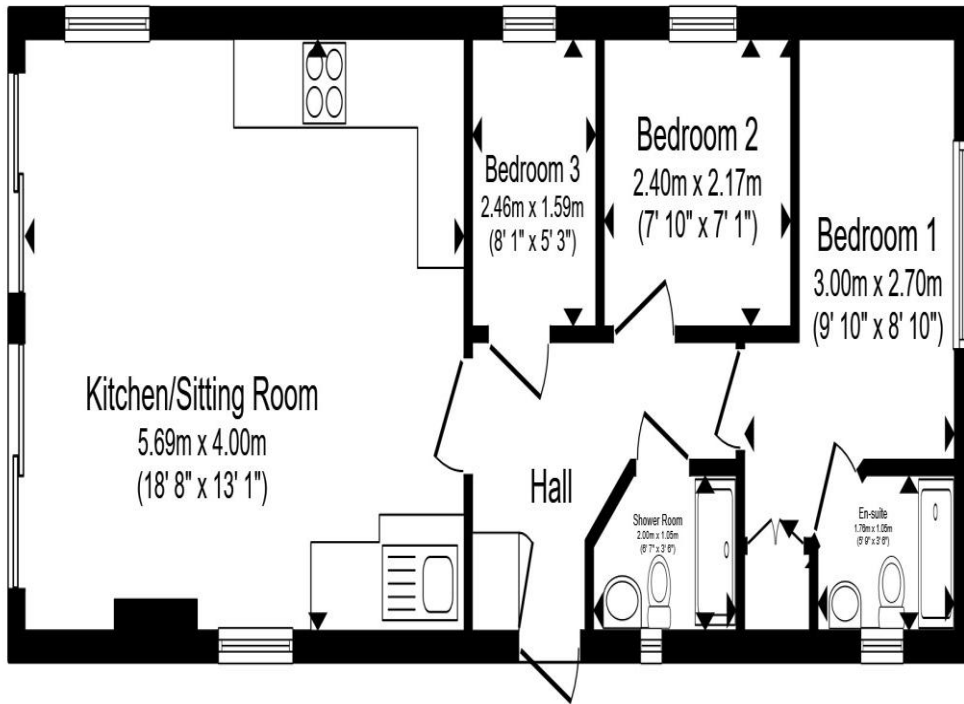
Double glazed window. Shower cubicle, low level WC and wash hand basin set over vanity unit.

### **Outside**

Steps up to gated decked area. Parking space.

### **Agents Notes:**

Agents Note: There are a number of obligations on both sellers and buyers when completing the process for purchasing a park home. Sites often have requirements specific to the purchase and to 'the site' in general, which could include paying the site owners commission. Intending purchasers should satisfy themselves about any such requirements including any specific restrictions on occupancy or residential use of the home. Purchasers are strongly advised to take advice from a solicitor. Guidance can be sought from Park homes - GOV.UK ([www.gov.uk](http://www.gov.uk))



**floor plan**

Total floor area 47.7 m<sup>2</sup> (514 sq.ft.) approx

This floor plan is for illustrative purposes only. It is not drawn to scale. Any measurements, floor areas (including any total floor area), openings and orientation are approximate. No details are guaranteed, they cannot be relied upon for any purpose and they do not form part of any agreement. No liability is taken for any error, omission or misstatement. A party must rely upon its own inspection(s). Powered by [www.propertybox.io](http://www.propertybox.io)



**welcome to**  
**Fulmer Fields Havant Road,**  
**Hayling Island**

- Holiday Park Home Available 12 Months of the Year
- Lounge, Dining & Kitchen Areas
- Three Bedrooms
- En-Suite Shower Room
- Park Facilities

Tenure: EPC Rating: Exempt

We are currently awaiting Tenure details. For further information please contact the branch. Please note additional fees could be incurred for items such as leasehold packs.

**£100,000**



**view this property online** [fox-and-sons.co.uk/Property/WLV109590](https://fox-and-sons.co.uk/Property/WLV109590)



Property Ref:  
WLV109590 - 0005

1. MONEY LAUNDERING REGULATIONS Intending purchasers will be asked to produce identification documentation at a later stage and we would ask for your co-operation in order that there is no delay in agreeing the sale. 2. These particulars do not constitute part or all of an offer or contract. 3. The measurements indicated are supplied for guidance only and as such must be considered incorrect. Potential buyers are advised to recheck measurements before committing to any expense. 4. We have not tested any apparatus, equipment, fixtures or services and it is in the buyers interest to check the working condition of any appliances. 5. Where an EPC, or a Home Report (Scotland only) is held for this property, it is available for inspection at the branch by appointment. If you require a printed version of a Home Report, you will need to pay a reasonable production charge reflecting printing and other costs. 6. We are not able to offer an opinion either written or verbal on the content of these reports and this must be obtained from your legal representative. 7. Whilst we take care in preparing these reports, a buyer should ensure that his/her legal representative confirms as soon as possible all matters relating to title including the extent and boundaries of the property and other important matters before exchange of contracts.

Fox & Sons is a trading name of Sequence (UK) Limited which is registered in England and Wales under company number 4268443, Registered Office is Cumbria House, 16-20 Hockliffe Street, Leighton Buzzard, Bedfordshire, LU7 1GN. VAT Registration Number is 500 2481 05.

  
fox & sons



**023 9226 2447**



[Waterlooville@fox-and-sons.co.uk](mailto:Waterlooville@fox-and-sons.co.uk)



81B London Road, WATERLOOVILLE,  
Hampshire, PO7 7ES



[fox-and-sons.co.uk](https://fox-and-sons.co.uk)