



18 The Cloisters, Ashton-On-Ribble, Preston, PR2 2PY

£1,100 Per Month

- Three Bedrooms
- Front and Rear Gardens
- Includes Fridge Freezer and Washing Machine
- Close to Local Amenities
- Modern Semi-Detached House
- Driveway for Easy Parking
- Located in Ashton-On-Ribble
- Viewing Highly Recommended

18 The Cloisters, Preston PR2 2PY

Nestled in the charming area of The Cloisters, this delightful semi-detached house offers a perfect blend of modern living and comfort. With three well-proportioned bedrooms, this property is ideal for couples and professionals seeking a spacious home.

Upon entering, you are welcomed into a bright reception room that provides a warm and inviting atmosphere, perfect for relaxation or entertaining guests. The house boasts a contemporary design throughout, ensuring a stylish and functional living space.

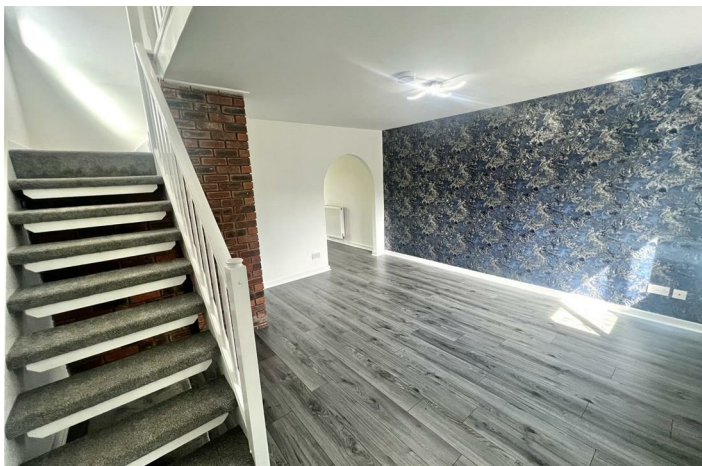
The kitchen is equipped with essential appliances, including a fridge freezer and washing machine, making it convenient for everyday living. The property is unfurnished, allowing you the freedom to personalise the space to your taste.

Outside, you will find both front and rear gardens, providing ample outdoor space for gardening, play, or simply enjoying the fresh air. The driveway offers off-road parking, adding to the convenience of this lovely home.

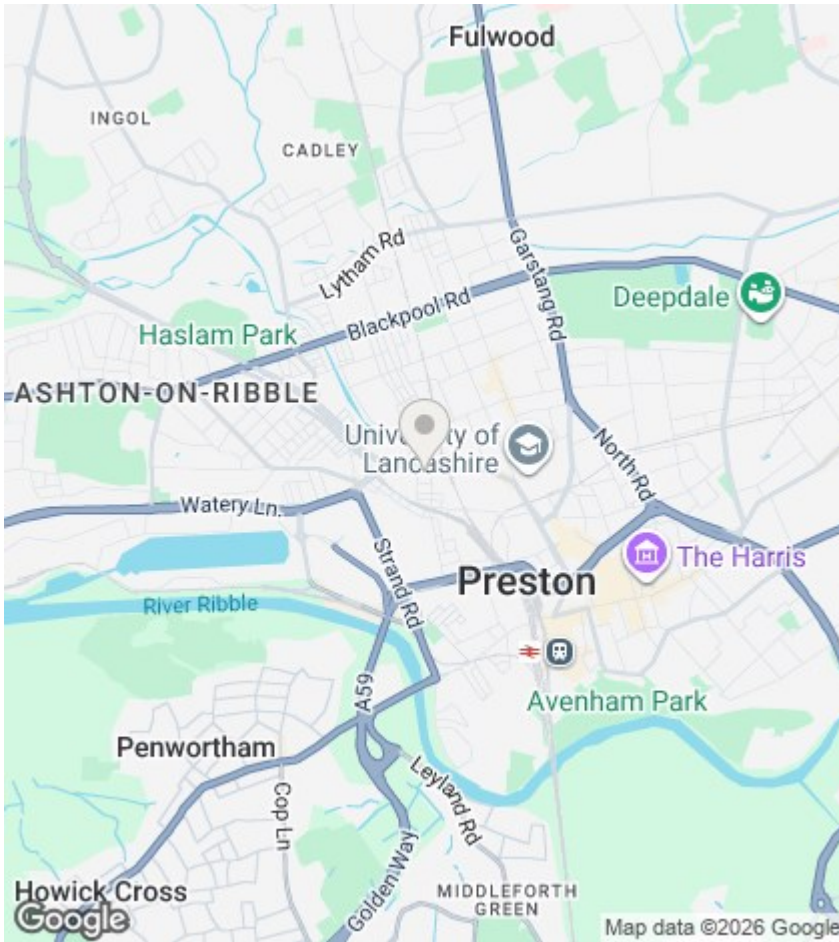
This property is not just a house; it is a place where you can create lasting memories. With its modern features and prime location, it presents an excellent opportunity for those looking to settle in a vibrant community. Do not miss the chance to make this charming residence your own.



Council Tax Band: B







Directions

Viewings

Viewings by arrangement only. Call 01772 888 887 to make an appointment.

EPC Rating:

C

Energy Efficiency Rating		Current	Potential
Very energy efficient - lower running costs			
(92 plus) A			
(81-91) B			87
(69-80) C		74	
(55-68) D			
(39-54) E			
(21-38) F			
(1-20) G			
Not energy efficient - higher running costs			
England & Wales		EU Directive 2002/91/EC	