

# 33 Village Centre, £290,000

(Other charges apply)

RICHMOND  
VILLAGES

Part of Bupa

SF

2



2



EPC - C



## 2 bedroom second floor apartment

A unique opportunity to purchase an attractive, two-bedroom assisted living apartment, with a south facing aspect looking over the internal gardens and games lawn. The property benefits from a generous living room, as well as two generous bedrooms, two en-suite shower rooms and kitchenette.

### Specification

- A spacious living room with south facing garden view. Modern remote controlled electric fire and surround.
- Modern fitted kitchenette with a range of wall and base units, integrated Neff fridge and under cupboard lighting.
- Spacious bedroom with fitted wardrobes.
- En-suite shower room with walk-in shower and fully fitted white suite.
- Second bedroom with fitted wardrobes.
- Second en-suite shower room with walk-in shower and fitted white suite.
- Entrance hall with large storage cupboard.
- TV and satellite points\*.
- Well stocked flower borders and lawns maintained by the Village Gardeners.
- Allocated parking space for one car.



\*Satellite subscription not included.

Important Notice: These particulars are intended to give a fair and substantially correct overall description. Other fees and charges apply, please contact the Village Advisers for further details. Properties are sold on a 125 year lease and this property has 118 years remaining.

01332 794300

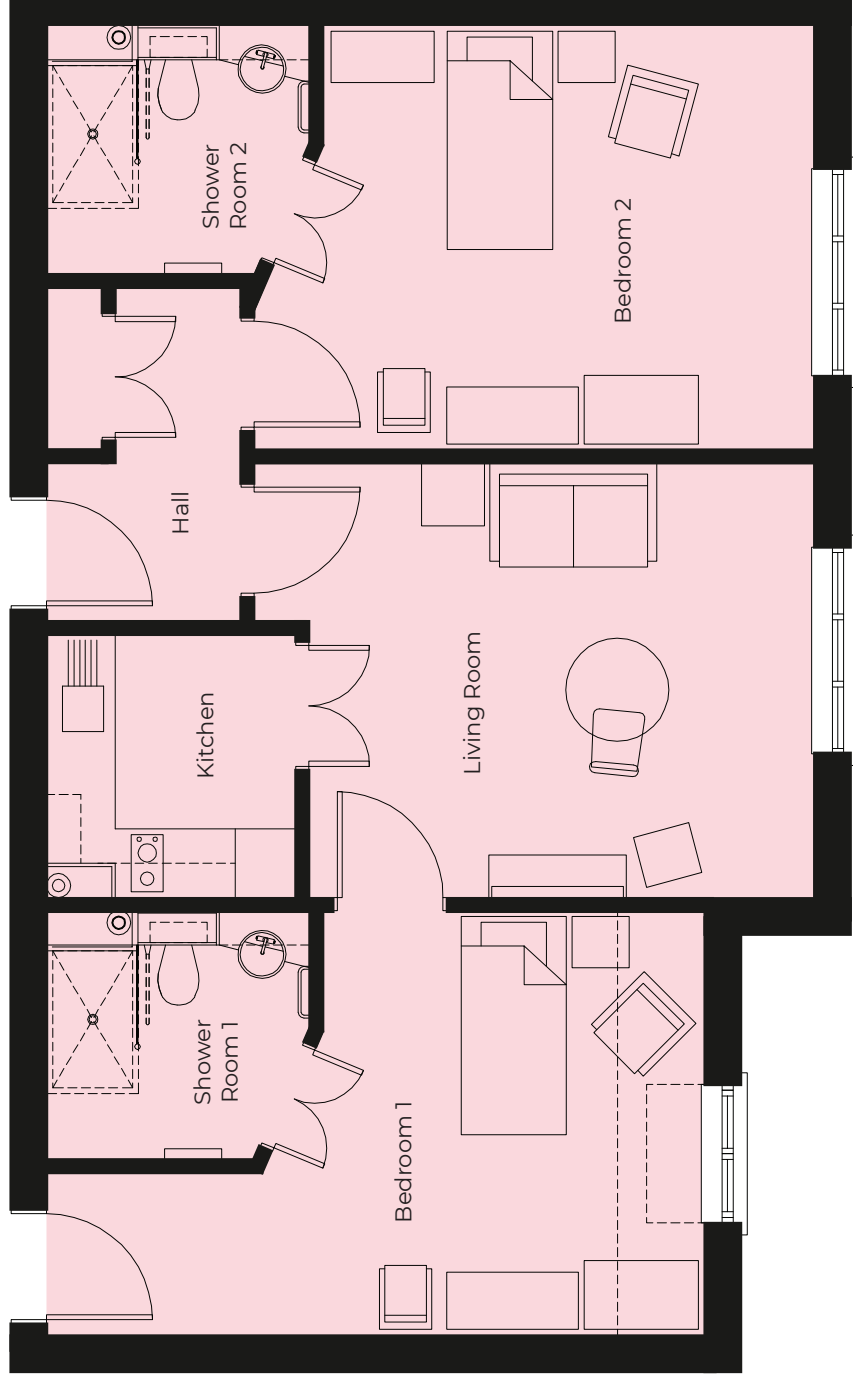
astonontrent@richmond-villages.com

Richmond Villages Aston-on-Trent,  
Richmond Drive, Aston-on-Trent, Derbyshire DE72 2EA

# 33 Village Centre

Second Floor | 73.19m<sup>2</sup> – 787.81ft<sup>2</sup>

<b>Kitchen</b>	2300mm x 2180mm 7'7" x 7'2"
<b>Living Room</b>	4900mm x 3800mm 16'1" x 12'6"
<b>Bedroom 1</b>	5750mm x 3710mm 18'10" x 12'2"
<b>Shower Room 1</b>	2300mm x 2180mm 7'7" x 7'2"
<b>Bedroom 2</b>	4900mm x 3710mm 16'1" x 12'2"
<b>Shower Room 2</b>	2300mm x 2180mm 7'7" x 7'2"



These particulars are intended to give a fair and substantially correct overall description.

Measurements have been taken at 1500mm skimming height.

All dimensions are approximate. Bedroom measurements include the wardrobe if applicable. Room measurements include bay windows if applicable.

Furniture layout is to give an indicative impression. Although all efforts have been made to ensure its accuracy at time of print dimensions, fixtures, fittings, finishes and specifications are subject to change without notice.

The properties are sold unfurnished.

