

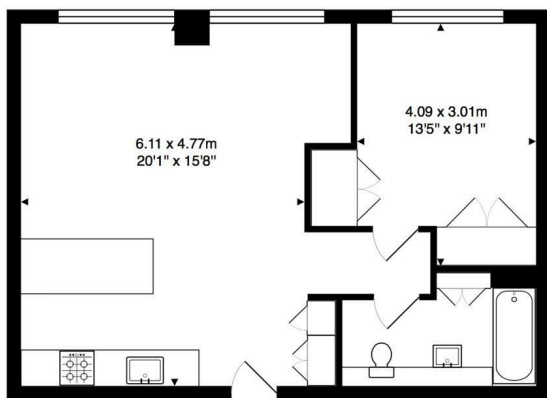
**Wigmore Jones Ltd**  
**Wigmore Jones - Lettings**  
Foundry Building, 2 Smiths Square  
77 Fulham Palace Road  
London  
W6 8AF  
**Contact**  
0207 118 8484  
help@wigmorejones.com  
www.wigmorejones.com

**Capital Building**  
New Union Square  
Nine Elms  
SW11 7AQ



# Capital Building

## £2,850 PCM



Total Area: 53.0 m<sup>2</sup> ... 571 ft<sup>2</sup>

All measurements are approximate and for display purposes only



### Local Authority

Wandsworth Borough Council

### Council Tax Band

E

### Directions

SW11 7AQ

Energy Efficiency Rating		Current	Potential
Very energy efficient - lower running costs			
(92 plus) A			
(81-91) B			
(69-80) C			
(55-68) D			
(39-54) E		82	82
(21-38) F			
(1-20) G			
Not energy efficient - higher running costs			
England & Wales		EU Directive 2002/91/EC	



**Agents Note:** Whilst every care has been taken to prepare these particulars, they are for guidance purposes only. All measurements are approximate and are for general guidance purposes only and whilst every care has been taken to ensure their accuracy, they should not be relied upon and potential buyers/tenants are advised to recheck the measurements