



## Welcome to Church Street Place

Experience modern luxury living at Church Street Place, ideally located on Vicarage Grove, Eccles. This new development offers stylish 1, 2, and 3-bedroom apartments featuring premium Bosch kitchens, two luxury furniture options, and access to concierge service, onsite management, and landscaped gardens.

Enjoy close proximity to the city while embracing a more relaxed town lifestyle — the perfect balance of comfort, design, and convenience.

### Community Features

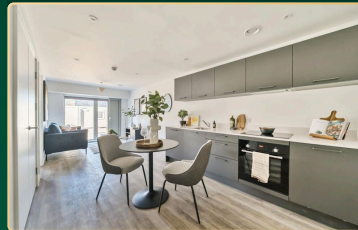
- Choice of 2 luxury furniture packages for effortless move-in
- Premium Bosch kitchens with integrated appliances and dishwashers
- Secure living with CCTV, concierge service, parcel safe room, and onsite management
- Secure bike storage for convenient, sustainable travel
- Beautifully landscaped communal gardens
- Excellent transport links to Manchester & Salford Quays

## Find the Home That Fits Your Life

### Available Apartment Types

#### 1 - bed Apartments

Starting from  
**£1,150 pcm**



1 Beds

1 Baths

43 sqm

- Integrated Appliances
- Open-plan living & dining area

#### 2 - bed Apartments

Starting from  
**£1,325 PCM**



2 Beds

1 Baths

61 sqm

- Equally spacious bedrooms
- Additional Ensuite bedrooms

#### 3 - bed Apartments

Starting from  
**£1,475 PCM**



3 Beds

1 Baths

87 sqm

- Experience elevated living with select 3-bedroom apartments featuring private balconies.
- Additional Ensuite

## Facilities & Amenities

### Experience Everyday Living Elevated

At Church Street Place, Eccles, we've created more than just homes — we've built a community where comfort, convenience, and connection come together. From thoughtfully designed interiors to lifestyle-focused amenities, every detail has been crafted to enhance modern living.



### Local Amenities

- Convenient shopping nearby: Morrisons (7 Irwell Pl), Sainsbury's Local (110 Gilda Brook Rd), and ALDI (15 Albert St)
- Excellent schools and nurseries: St Mary's Primary School (4 Hemming Dr), The Cottage Nursery (1 Clarendon Rd), St Andrew's Primary School (Barton Lane)
- Eccles Train station is also within walking distance, offering direct rail services into Manchester city centre.
- For light rail, the Manchester Metrolink line (Eccles Line) is nearby, providing easy access to Salford Quays and Manchester Piccadilly.

### Enquire Now

- [donte@arelsco.com](mailto:donte@arelsco.com)
- 07909336622

**Lambert  
Smith  
Hampton**  
Residential

**CHURCH  
STREET  
PLACE**