

Adelaide Grove,  
Shepherd's Bush, London,  
£2,095 Per Month

 2  1  1  C

# Adelaide Grove, Shepherd's Bush, London,

£2,095 Per Month



## Summary Description

**\*\* GARDEN MAISONETTE \*\*** Jorgensen Turner is pleased to offer this wonderful two double bedroom unfurnished GARDEN flat on Adelaide Grove. Offered in very good condition throughout, this property is perfect for two sharers, a small family or a couple wanting plenty of space.

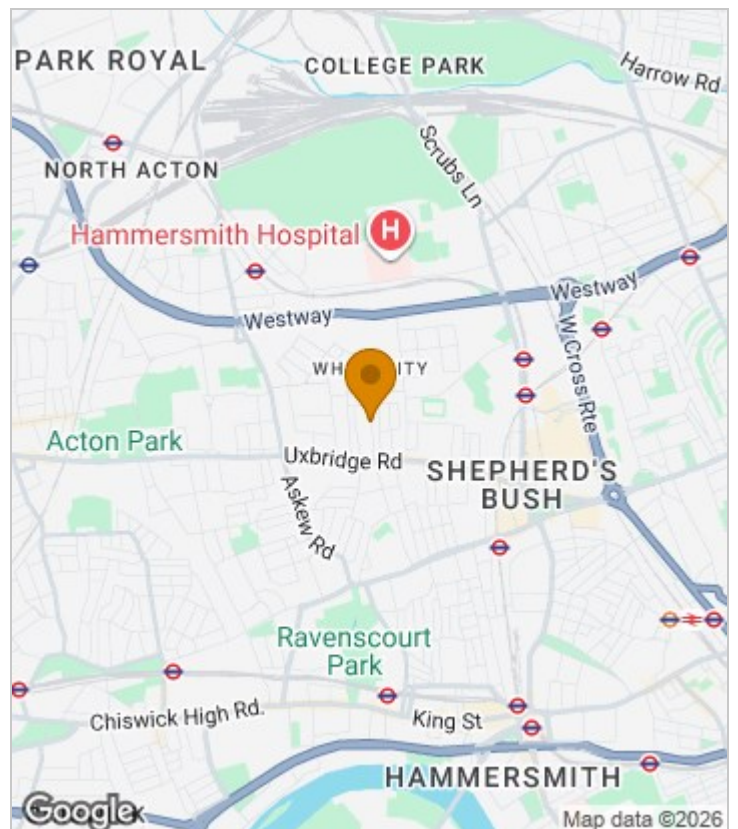
The location is well-served by a number of excellent independent shops, coffee shops (Proud Mary's), bars and pubs (The Hawthorn) along the Uxbridge Road. Transport wise the property is well served by the Central Line (White City & Shepherd's Bush), the Circle Line & Hammersmith & City Line (Shepherd's Bush Market and Wood Lane) and London Overground (Shepherd's Bush). The Westfield shopping centre is also only a short walk away from the property offering every retail store you could wish for. For the motorist the A4 and A40 are close by for easy access out to the West and North West of London.

Available NOW. EPC Rating C

Council tax band D: Hammersmith and Fulham

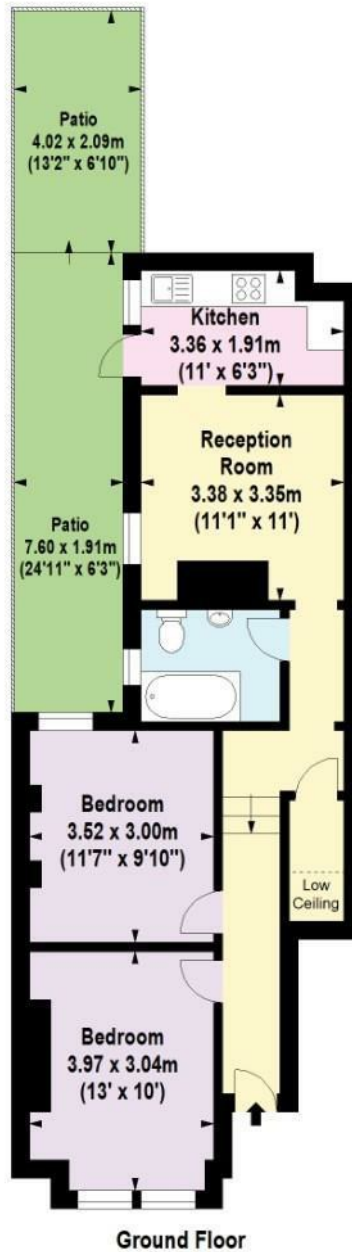
Deposit: One week's rent to reserve, with a security deposit of either 5 weeks' rent (for properties under £50,000pa) or 6 weeks' rent (for those over £50,000pa).

## Area Map





# Floor Plan



Ground Floor



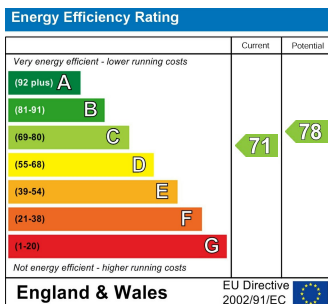
For Identification Purposes Only. Not To Scale. © www.totalvista.uk 2026

Adelaide Grove, W12

Approx. Gross Internal Area  
57.78 Sq M - 622 Sq Ft



## Energy Efficiency Graph



## Viewing

Please contact our Lettings SB Office on 0208 740 8740 if you wish to arrange a viewing appointment for this property or require further information.

- TWO DOUBLE BEDROOMS
- AVAILABLE NOW
- VERY GOOD CONDITION
- CLOSE TO AMENTIES
- SOUTH WEST FACING DECKED GARDEN
- UNFURNISHED
- POPULAR LOCATION
- EPC RATING C

For further information contact:

Lettings SB, 234 Uxbridge Road, Shepherds Bush, London, W12 7JD

Tel: 0208 740 8740 Email: [enquiries@jorgensenturner.com](mailto:enquiries@jorgensenturner.com)

<https://www.jorgensenturner.com/>

### Disclaimer

These particulars, whilst believed to be accurate are set out as a general outline only for guidance and do not constitute any part of an offer or contract. Intending purchasers should not rely on them as statements of representation of fact, but must satisfy themselves by inspection or otherwise as to their accuracy. No person in this firm's employment has the authority to make or give any representation or warranty in respect of the property.