



Lexington Place

765 Finchley Road, NW11

£3,000 per month
(£692.31 per week)

A luxurious 2 double bedroom 3rd floor apartment in this prestigious development boasting a private gymnasium, underground parking for 2 cars, small decked terrace, communal gardens, plenty of storage in the basement for bicycles and Harrods concierge service. The building is situated walking distance to Hampstead Heath, a short walk to the shopping amenities of Golders Green (Northern Line Underground Station). Accommodation comprises large entrance hall, reception room with terrace off, open plan fully fitted kitchen with Miele appliances, 2 double bedrooms both with fitted wardrobes, family bathroom.

CHESTERTONS



Lexington Place

765 Finchley Road, NW11

- A 3rd Floor Apartment in Prestigious Development
- 2 Double Bedrooms, 1 Bathroom, Reception, Open Plan Fully Fitted Kitchen
- Lift, Wood Floors, 2 Parking Spaces, Harrods Concierge Service, Gymnasium, Decked Terrace, Communal Gardens, Air Conditioning
- Walking Distance to Hampstead Heath, Short Walk to Shopping Amenities of Golders Green (Northern Line)



Minimum Term: 12 months
Deposit Required: £3,461.54
Local Authority: London Borough Of Barnet
Council Tax Band: E
EPC Rating: B
Unfurnished

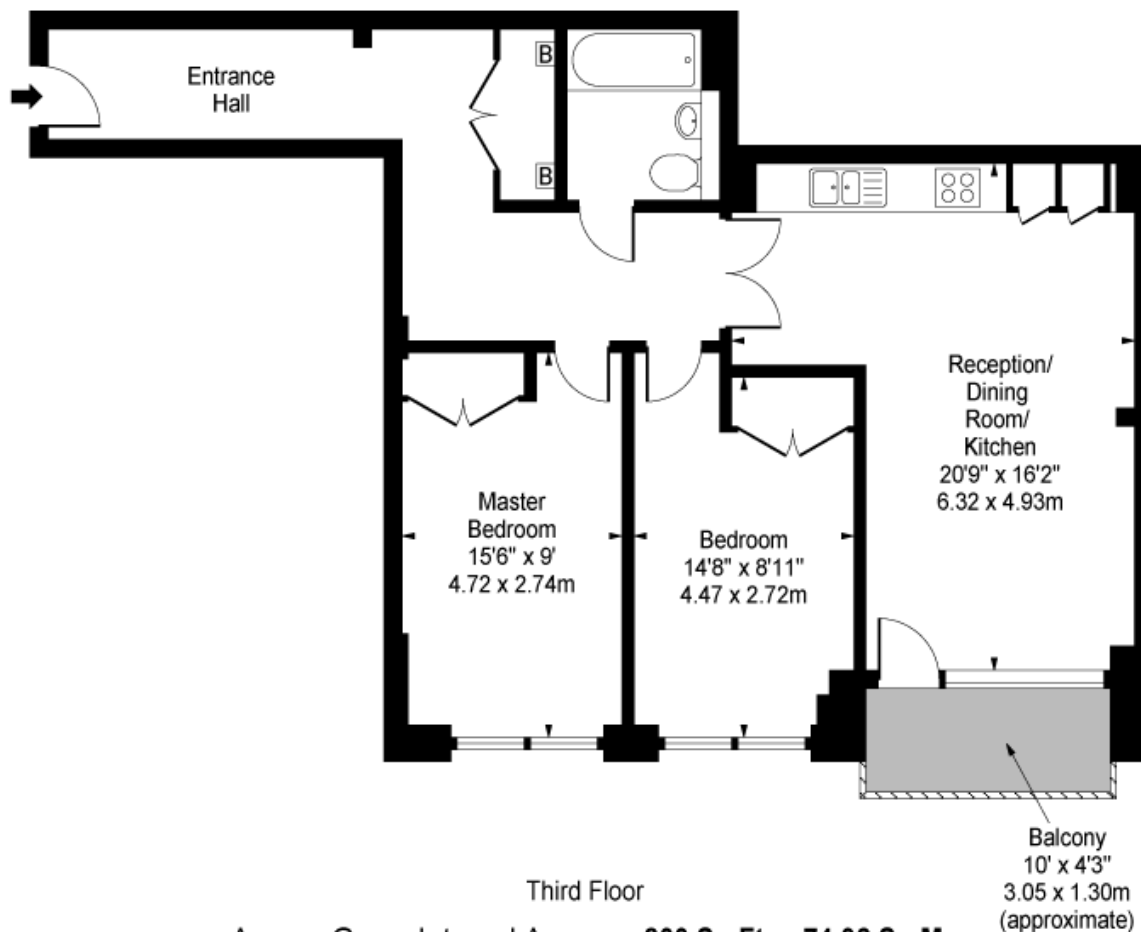
Energy Efficiency Rating		Current	Potential
Very energy efficient - lower running costs			
(92-100)	A		
(81-91)	B	82	82
(69-80)	C		
(55-68)	D		
(39-54)	E		
(21-38)	F		
(1-20)	G		
Not energy efficient - higher running costs			
England, Scotland & Wales		EU Directive 2002/91/EC	

Chestertons Hampstead Lettings

55-56 Hampstead High Street
 Hampstead
 London
 NW3 1QH
hampsteadlettingsusers@chestertons.co.uk
 02077941125
chestertons.co.uk

Additional tenant charges apply (fees apply to non-AST tenancies only)
 Tenancy Agreement Fee: £300
 References per Tenant/Guarantor: £60
 Inventory check (approx. £100 – £250 inc. VAT)
chestertons.co.uk/property-to-rent/applicable-fees

Lexington Place, Finchley Road, NW11



Approx Gross Internal Area **800 Sq Ft - 74.32 Sq M**

For Illustration Purposes Only - Not To Scale

www.goldlens.co.uk

Prepared for Chestertons

Ref. No. 001248

