



Highbury Stadium Square, N5

£400,000

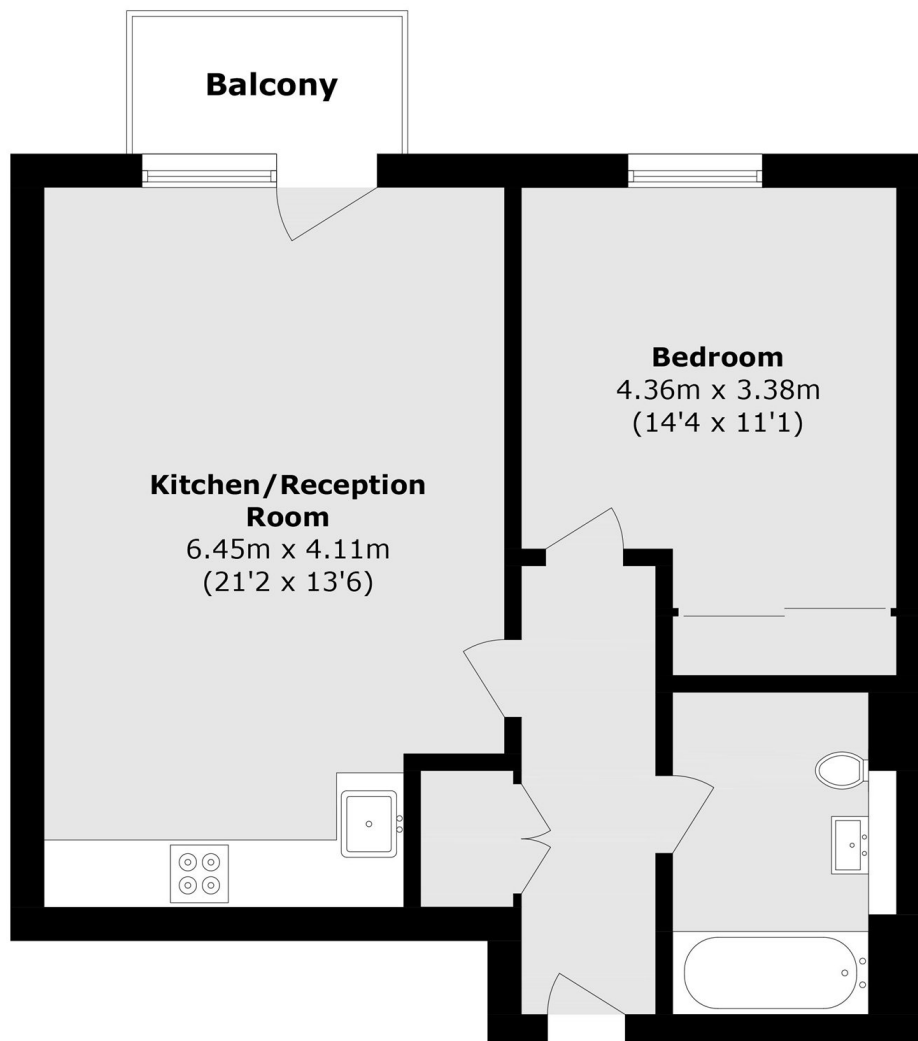
A one bedroom flat set on the third floor of the popular and stylish Highbury Stadium Square development. With far reaching views across North London, this home offers modern finishes throughout and open plan living leading out to a private balcony. On site there is a 24 hour concierge service and well manicured communal gardens.

At under half a mile from Arsenal tube station (Piccadilly line) and Drayton Park station (Great Northern Line) there are numerous connections to The City and beyond. The restaurants, shops and independent cafés of Highbury Barn and Highbury Park are also within easy reach.

Features

- One Bedroom
- Third Floor
- Private Balcony
- Concierge
- Chain Free
- Gated Development

Highbury Stadium Square, London, N5



Total area (approx.): 52.1 sq. m (560.8 sq. ft)

Balcony area (approx.): 2.9 sq m (31.2 sq ft)