



10 Den Lane

Shotts, ML7 4JW

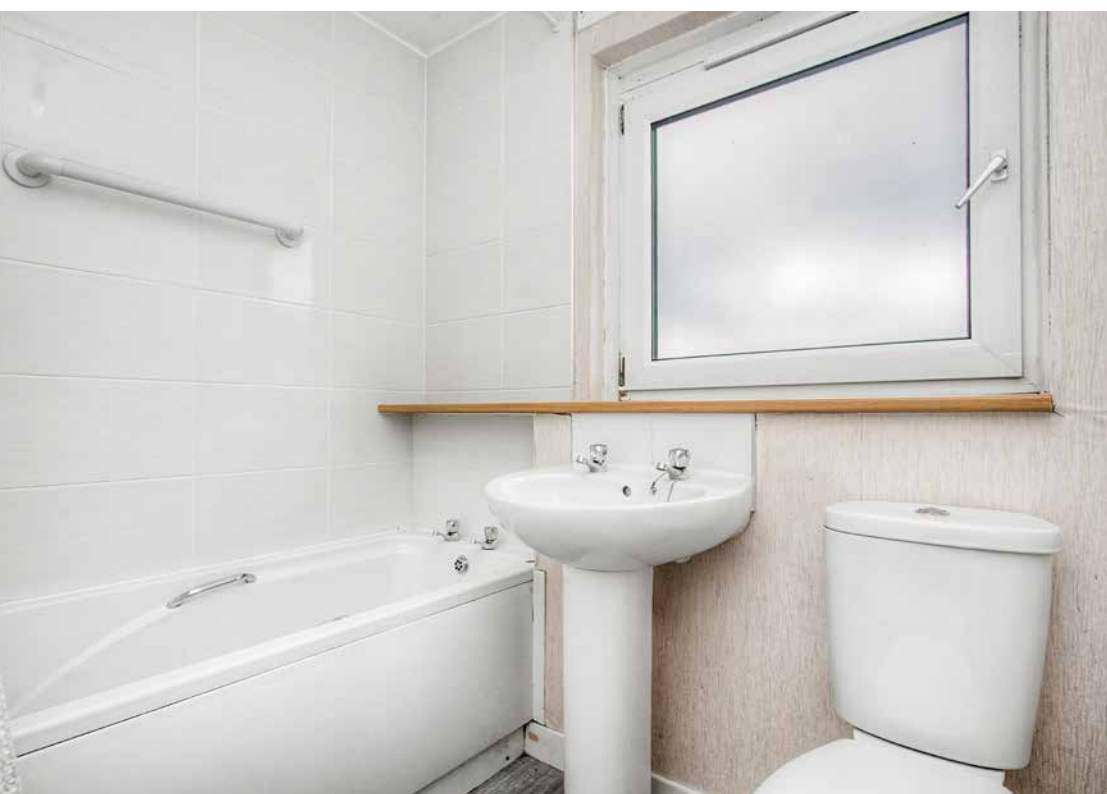


Positioned within a well-established neighbourhood in Shotts, this end-terrace home offers excellent connectivity for commuters, with convenient access to both Glasgow and Edinburgh, as well as a range of local amenities, schooling, and nearby green spaces. The location provides a practical and well-connected setting for everyday living. Internally, 10 Den Lane offers spacious accommodation with clear scope for cosmetic upgrading, comprising a bright south-facing living room, a separate dining room, and a kitchen with direct garden access. The upper level hosts three bedrooms, all with storage, and a family bathroom. Externally, there are private gardens with a store and drying area, along with on-street parking.

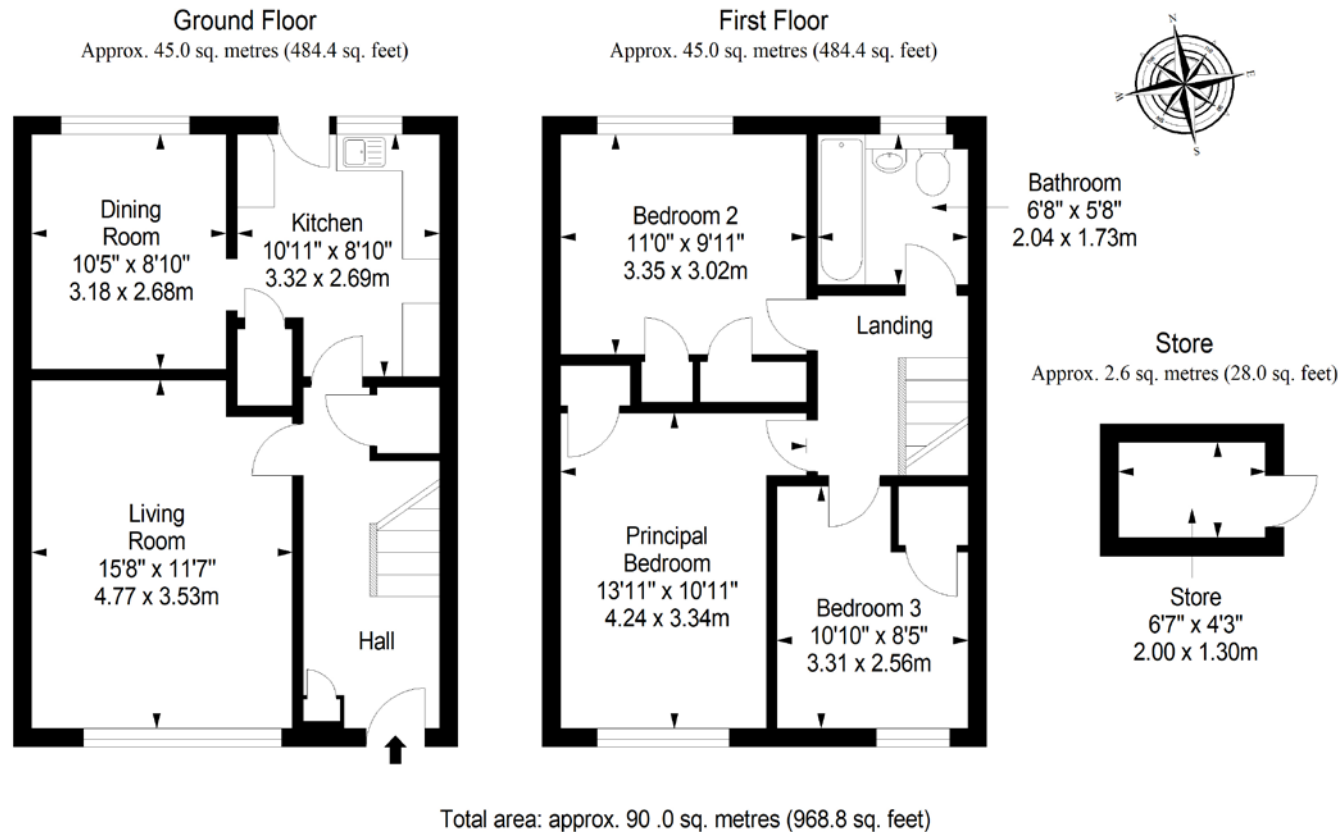
Extras: All fitted floor and window coverings, and light fittings are included in the sale.

Property Features

- End of Terrace in Shotts
- Set in an established neighbourhood
- Exciting opportunities for cosmetic upgrades
- Entrance hall with storage
- South-facing living room
- Separate dining room
- Kitchen with rear access
- Sunny principal bedroom with built-in storage
- Two more bedrooms with storage
- Bathroom with overhead shower
- Private gardens with a store and drying area
- On-street parking
- Gas central heating and double glazing
- EPC Rating - C



Floorplan



All Enquiries to our Property Department:

Afton Henderson | ah@sneddons-ssc.co.uk | 01506 815832 | www.sneddonmorrison.co.uk
14 East Main Street, Whitburn, West Lothian EH47 ORB

IMPORTANT: The selling agents for themselves and for the sellers of the above property give notice that these particulars are for guidance only and their accuracy is not guaranteed. These particulars will not form part of any contract and interested parties should satisfy themselves in all aspects prior to submitting offers. The sellers do not bind themselves to accept the highest offer. S1106