



Knighton Fields Road West, Knighton Fields

£180,000 Freehold

A two-bedroom mid-terrace home offered with no upward chain, featuring two reception rooms, period-style fireplaces, courtyard garden, and convenient access to local amenities and bus links.

Council Tax band: A

Tenure: Freehold

EPC Energy Efficiency Rating: D

EPC Environmental Impact Rating: E



0116 274 5544





Reception Room One

13' 9" x 10' 6" (4.20m x 3.20m)

(into recess) Includes a double-glazed bay window to the front elevation, meter cupboard, fireplace, and radiator.

Reception Room Two

12' 2" x 11' 2" (3.70m x 3.40m)

Includes a double-glazed window to the rear elevation, stairs to the first floor with an under-stairs storage cupboard, a fireplace, laminate flooring, and a radiator.

Kitchen

12' 2" x 5' 7" (3.70m x 1.70m)

Includes a double-glazed door and window to the side elevation, stainless steel sink and drainer unit, and a range of wall and base units. Features a built-in oven and gas hob with a stainless steel splashback and chimney hood, a built-in fridge, and plumbing for a washing machine.



Bedroom One

11' 10" x 11' 2" (3.60m x 3.40m)

Includes a double-glazed window to the front elevation, a fireplace, and a radiator.

Bedroom Two

12' 2" x 8' 2" (3.70m x 2.50m)

Includes a double-glazed window to the rear elevation, built-in cupboard, picture rail, fireplace, and radiator.

Bathroom

12' 6" x 5' 11" (3.80m x 1.80m)

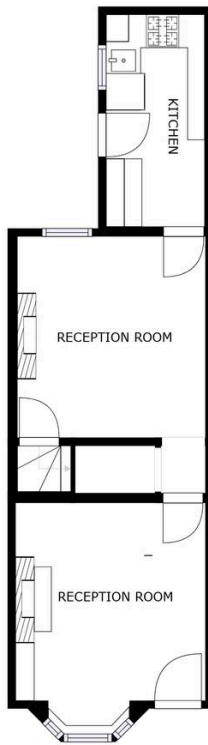
Includes a double-glazed window to the rear elevation, bath with mixer tap shower attachment, pedestal wash hand basin, low-level WC, and a cupboard housing the boiler.

Front Garden

Paved front forecourt with hedging provided for privacy.

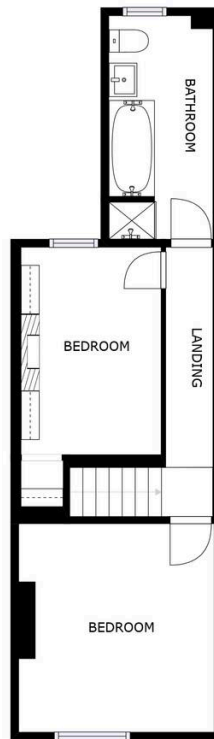
Rear Garden

Paved courtyard-style rear garden with an outside store, fence to perimeter, and gate for rear access.



FLOOR 1

SIZES AND DIMENSIONS ARE APPROXIMATE, ACTUAL MAY VARY.



FLOOR 2

SIZES AND DIMENSIONS ARE APPROXIMATE, ACTUAL MAY VARY.



We'll keep you moving...



We must inform all prospective purchasers that the measurements are taken by an electronic take and are provided as a guide only and they should not be used as accurate measurements. We have not tested any mains services, gas or electric appliances, or fixtures and fittings mentioned in these details, therefore, prospective purchasers should satisfy themselves before committing to purchase. Intending purchasers must satisfy themselves by inspection or otherwise to the correctness of the statements contained in these particulars. Knightsbridge Estate Agents (nor any person in their employment) has any authority to make any representation or warranty in relation to the property. The floor plans are not to scale, and are intended for use as a guide to the layout of the property only. They should not be used for any other purpose. We are required by law to conduct anti-money laundering checks on all those selling or buying a property. Whilst we retain responsibility for ensuring checks and any ongoing monitoring are carried out correctly, the initial checks are carried out on our behalf by Lifetime Legal who will contact you once you have agreed to instruct us in your sale or had an offer accepted on a property you wish to buy. The cost of these checks is £60 (incl. VAT), which covers the cost of obtaining relevant data and any manual checks and monitoring which might be required. This fee will need to be paid by you in advance of us publishing your property (in the case of a vendor) or issuing a memorandum of sale (in the case of a buyer), directly to Lifetime Legal, and is non-refundable. We will receive some of the fee taken by Lifetime Legal to compensate for its role in the provision of these checks.