



Lower Moor | Yateley | Hampshire | GU46 6HF

£520,000

Freehold

*Waterfords* W  
Residential Sales & Lettings

Lower Moor | Yateley  
Hampshire | GU46 6HF  
£520,000

A well-presented detached three-bedroom, two-bathroom family home, offering driveway parking and a garage.

- Detached three bedroom home
- Well presented throughout
- Walking distance to local shops, amenities and good schools
- Planning permission granted recently for a downstairs bedroom and bathroom
- Situated in a popular close with attractive countryside locally
- Modern kitchen, bathroom and en suite shower room
- Lounge/diner with doors onto the garden.
- Garage and driveway parking
- Enclosed private garden



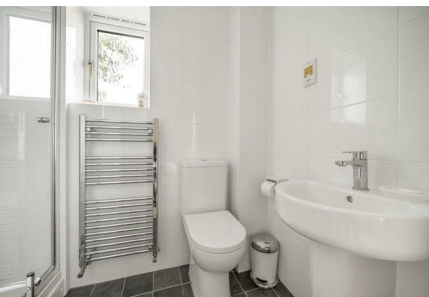
## Description

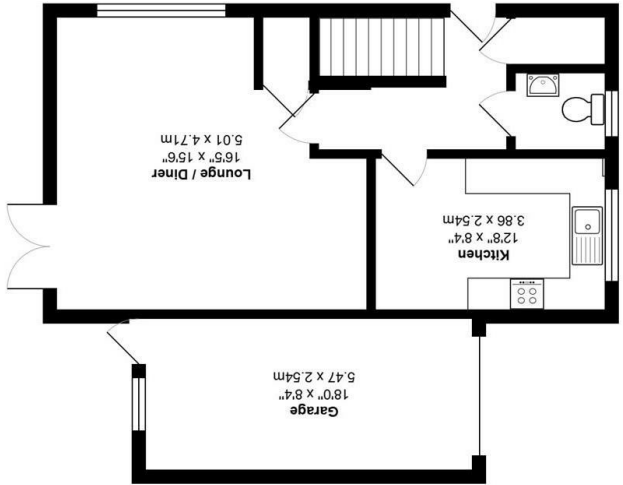
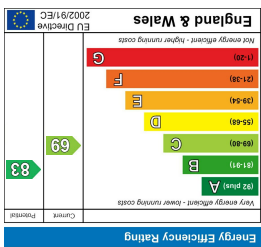
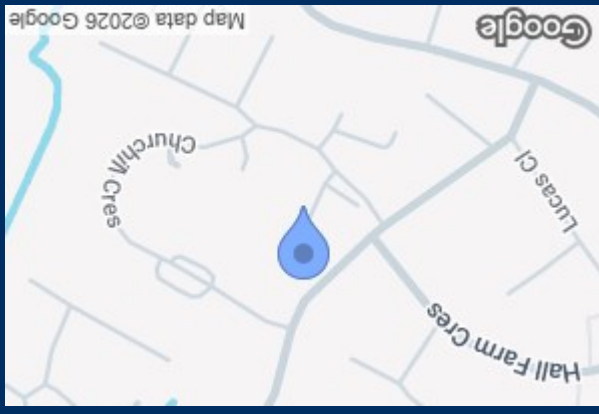
A beautifully presented Charles Church home that has been extensively updated by the current owners, featuring a contemporary John Lewis kitchen, stylishly refitted bathrooms, and Sherborne double-glazed windows throughout.



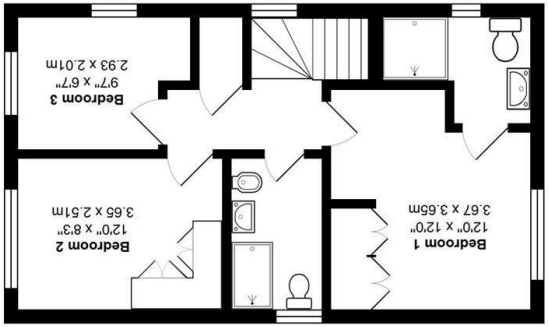
The property offers a generously sized kitchen, a modern cloakroom, and a spacious living room with direct access to the attractive rear garden. Upstairs, there are two well-proportioned double bedrooms, including a principal bedroom with a refitted en-suite shower room. A third bedroom and a contemporary four-piece family bathroom complete the first floor.

To the front, the property benefits from driveway parking leading to a single garage, while to the side there is a charming walled garden. Situated in the popular village of Yateley, the home is close to well-regarded local schools, beautiful countryside, a variety of shops and pubs, and excellent road links nearby.





Total Area: 1102 ft<sup>2</sup> ... 102.4 m<sup>2</sup>  
 All measurements are approximate and for display purposes only



35 Plough Road  
 Yateley  
 Hampshire  
 GU46 7UW  
 01252 870222  
 yateley@waterfords.co.uk