

TAYLOR
MICHAEL

SALES & LETTINGS



4 Bedroom
House - Detached
located in
Woodland Drive

Offers in excess of
£1,000,000



TAYLOR
MICHAEL

Woodland Drive, Hove, BN3 6DL

Approximate Gross Internal Area = 176 sq m / 1894 sq ft
 Garage / Store = 35.7 sq m / 384 sq ft
 Total = 211.7 sq m / 2278 sq ft

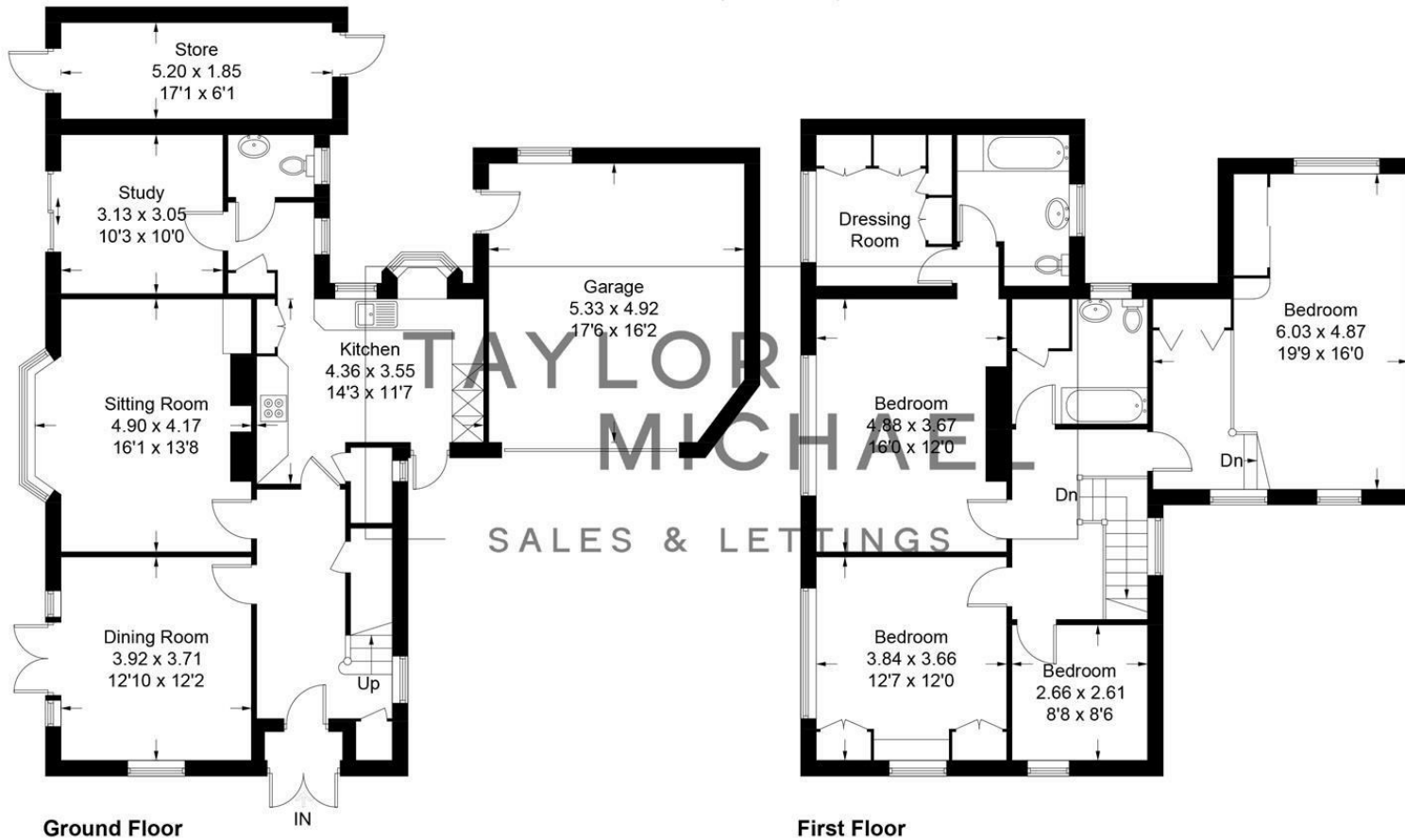


Illustration for identification purposes only, measurements are approximate, not to scale.
 Imageplansurveys @ 2026

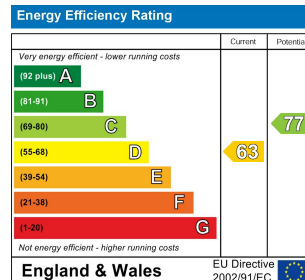
DESCRIPTIONS

Taylor Michael are delighted to introduce this exceptional four-bedroom detached residence, offered to the market with no onward chain and on a freehold basis, ideally positioned on the highly sought-after Woodland Drive in Hove. This impressive family home offers generous and well-balanced accommodation throughout, combining elegant proportions with modern functionality, making it perfectly suited to discerning buyers seeking both space and quality in a prime residential location.

CONTACT

62 Church Road
 Hove
 East Sussex
 BN3 2FP

E: lettings@taylormichael.agency
 T: 01273 600100
<https://taylormichael.agency/>



TAYLOR MICHAEL