

Salisbury Road, NW6

£738 Per week

A beautifully presented three double bedroom split level apartment to let on the first floor of this period building located in the heart of Queens Park. Perfect for a professional sharers who love to entertain.

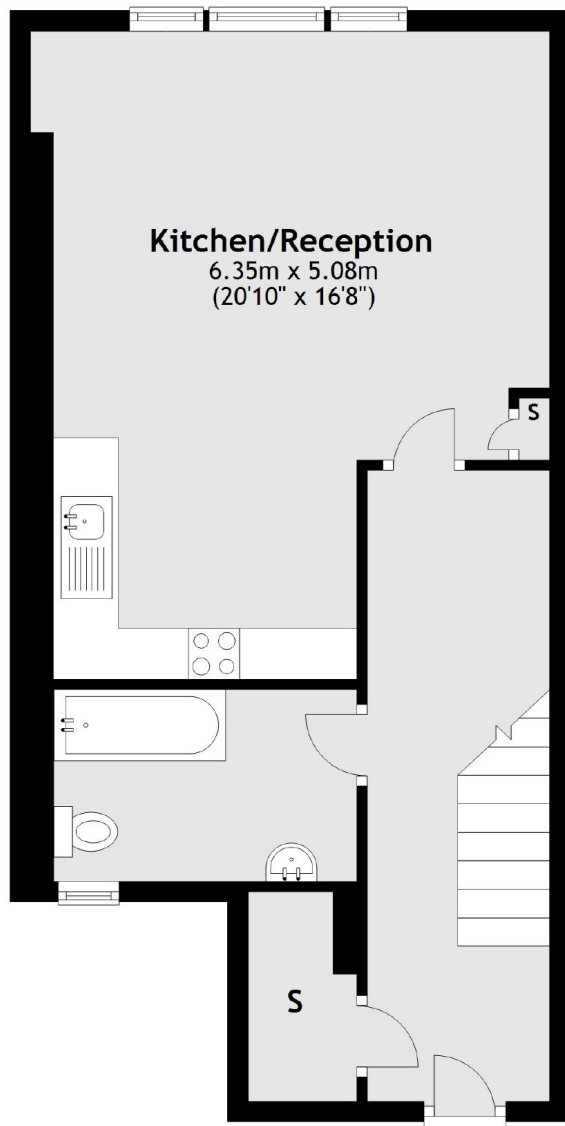
Ideally located in the heart of Queens Park, offering easy access to local shops and restaurants there including Planet Organic and Gails Bakery

Features

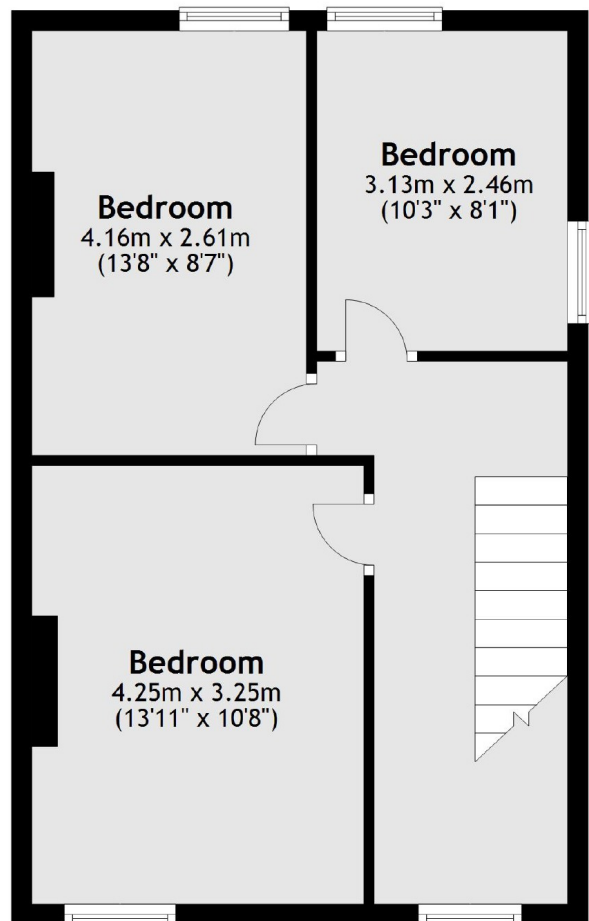
- Three Double Bedrooms
- One Bathroom
- Open Plan Living
- Split Level
- High Ceilings
- Wood Flooring

Salisbury Road, London, NW6

First Floor



Second Floor



Total area: approx. 93.5 sq. metres (1006.4 sq. feet)