



Fairstead Drove, Shouldham, King's Lynn, PE33 0DL

welcome to

Fairstead Drove, Shouldham, King's Lynn

An impressive four-bedroom detached home set in the desirable village of Shouldham, offering spacious, light-filled living with a stunning open-plan kitchen, multiple reception rooms & a luxurious master suite. Featuring a private garden, garage & gated driveway, all in a peaceful, secluded setting.



Accommodation:

Double-glazed entrance door to:

Entrance Hall

Double-glazed entrance doors to both sides. Floor-to-ceiling double-glazed window to the front. Stairs leading to the first floor landing.

Lounge

Three sets of double-glazed doors leading to outside space. Feature electric fire.

Dining Room

Double-glazed French doors with sidelights to the rear leading to the rear garden.

Open Plan Kitchen/Dining Space

This newly-fitted kitchen includes both wall & base units with work surfaces over, a one and a half bowl composite sink & drainer unit, and a range-style cooker with cooker hood over. There is also a central kitchen island with breakfast bar, as well as an integrated dishwasher, space for a wine cooler & space for an American-style fridge/freezer. Double-glazed windows to the front & side.

Utility Room

Fitted with wall & base units with work surfaces over. Composite sink & drainer unit. Space & plumbing for a washing machine & tumble dryer. Double-glazed window to the front. Double-glazed door to the side.

Cloakroom

Fitted with WC & wash hand basin with vanity unit. Double-glazed window to the side.

First Floor Landing

Stairs from the entrance hall. Radiator. Loft access.

Bedroom One

Two double-glazed windows to the side. Radiator. Large walk-in wardrobe with built-in storage.

En Suite

Fitted with WC, pedestal wash hand basin, bath & walk-in shower cubicle. Radiator. Double-glazed windows to the side & rear.

Bedroom Two

Double-glazed windows to the front & rear. Double-glazed skylight window. Radiator. Storage in eaves.

Bedroom Three

Double-glazed skylight window. Radiator. Storage in eaves.

Bedroom Four

Double-glazed floor-to-ceiling window to the front. Radiator.

Bathroom

Fitted with WC, twin pedestal wash hand basins, bath & shower cubicle. Radiator. Double-glazed skylight window.

Outside

To the front of the property, a five-bar gate opens onto a generous gravel driveway, providing ample off-road parking for numerous vehicles and leading to a detached garage with space above suitable for a home office. The frontage is attractively enclosed by established hedging, creating a welcoming yet private approach.

The rear garden is a particularly attractive feature of the home, offering a good-sized and enclosed outdoor space ideal for both relaxation and entertaining. A spacious paved patio sits directly to the rear, providing an ideal area for outdoor dining and enjoying views over the garden. The remainder is laid mainly to lawn, bordered by a combination of mature shrubs, hedging and timber fencing, offering a good degree of privacy.

Additional benefits include a greenhouse and well-planted borders, adding interest and potential for keen gardeners. The overall plot provides a wonderful balance of usable lawn and seating areas, perfect for families and those who enjoy outdoor living.

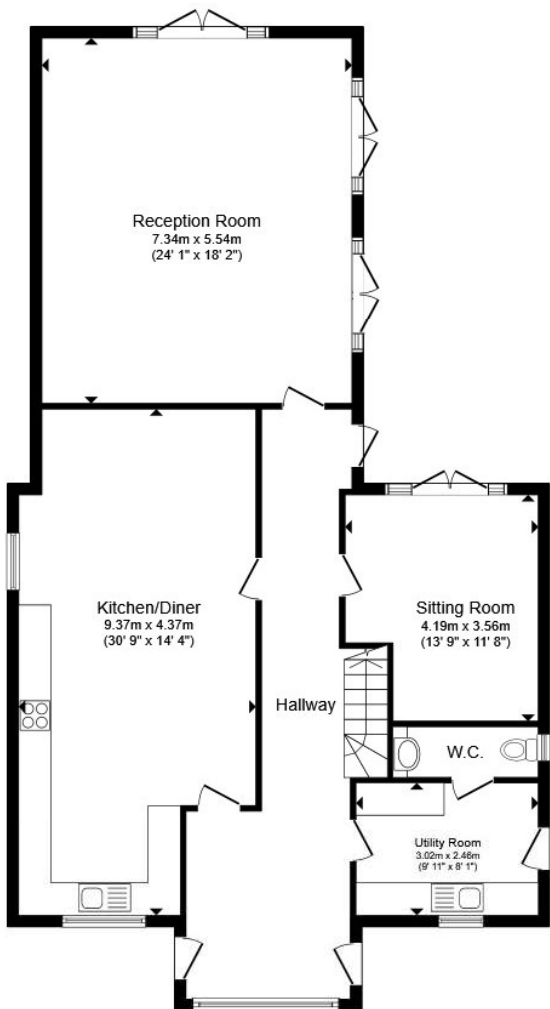
Agent's Note

Heating to the property is served by oil central heating, with underfloor heating to the ground floor & radiators to the first floor. Please contact the branch for more information if required.

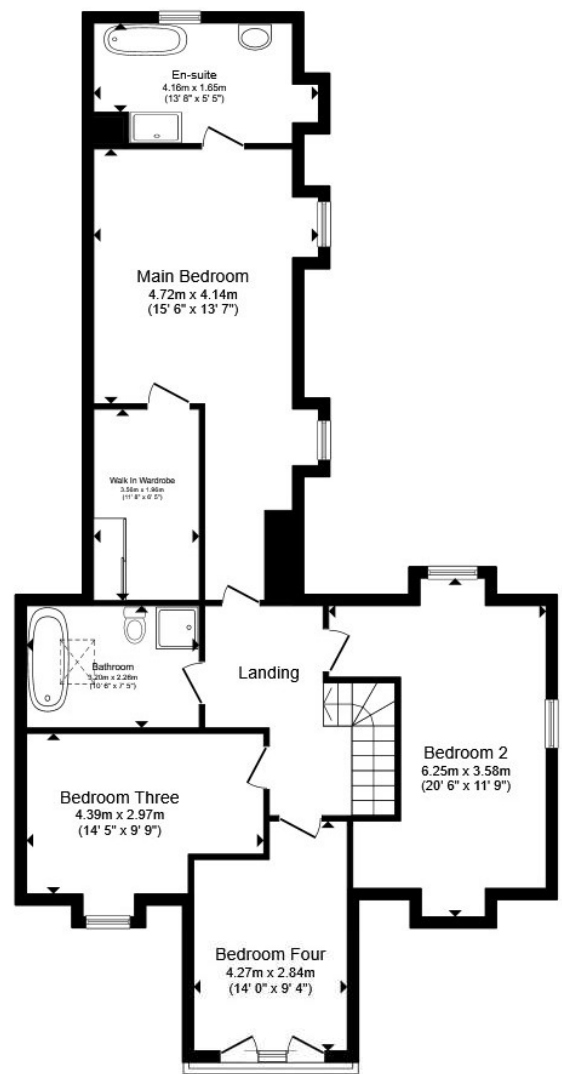


check out more properties at williamhbrown.co.uk

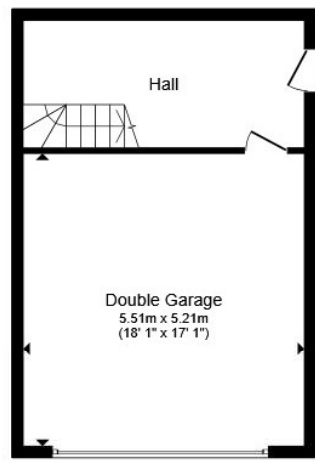




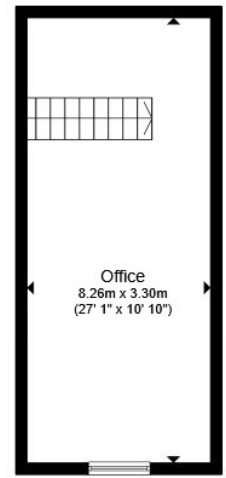
Ground Floor



First Floor



Garage Ground Floor



Garage First Floor

Total floor area 299.7 m² (3,226 sq.ft.) approx

This floor plan is for illustrative purposes only. It is not drawn to scale. Any measurements, floor areas (including any total floor area), openings and orientation are approximate. No details are guaranteed, they cannot be relied upon for any purpose and they do not form part of any agreement. No liability is taken for any error, omission or misstatement. A party must rely upon its own inspection(s). Powered by www.propertybox.io



welcome to

Fairstead Drove, Shouldham, King's Lynn

- Substantial four bedroom detached house
- Highly desired village setting
- Newly-fitted open plan kitchen/diner
- Multiple reception rooms
- Master suite with en suite + walk-in wardrobe

Tenure: Freehold EPC Rating: Awaiting

Council Tax Band: F

£650,000



Please note the marker reflects the postcode not the actual property

check out more properties at williamhbrown.co.uk



Property Ref:
DHM112935 - 0003

1. MONEY LAUNDERING REGULATIONS Intending purchasers will be asked to produce identification documentation at a later stage and we would ask for your co-operation in order that there is no delay in agreeing the sale. 2. These particulars do not constitute part or all of an offer or contract. 3. The measurements indicated are supplied for guidance only and as such must be considered incorrect. Potential buyers are advised to recheck measurements before committing to any expense. 4. We have not tested any apparatus, equipment, fixtures or services and it is in the buyers interest to check the working condition of any appliances. 5. Where an EPC, or a Home Report (Scotland only) is held for this property, it is available for inspection at the branch by appointment. If you require a printed version of a Home Report, you will need to pay a reasonable production charge reflecting printing and other costs. 6. We are not able to offer an opinion either written or verbal on the content of these reports and this must be obtained from your legal representative. 7. Whilst we take care in preparing these reports, a buyer should ensure that his/her legal representative confirms as soon as possible all matters relating to title including the extent and boundaries of the property and other important matters before exchange of contracts.

William H Brown is a trading name of Sequence (UK) Limited which is registered in England and Wales under company number 4268443. Registered Office is Cumbria House, 16-20 Hockliffe Street, Leighton Buzzard, Bedfordshire, LU7 1GN. VAT Registration Number is 500 2481 05.



01366 387638



DownhamMarket@williamhbrown.co.uk



2 Market Place, DOWNHAM MARKET, Norfolk,
PE38 9DE



williamhbrown.co.uk