



**Tedworth Square, SW3**

**£2,690,000**

**Dexters**



## Tedworth Square, SW3

A four bedroom apartment with access to communal gardens. Presented in excellent condition and benefitting from its own front door as well as a residential porter, this property has proven to be an ideal family home.

Entered through your own front door, a south facing reception room looking towards Tedworth Square greets you. There is also a separate kitchen and two further bedrooms with plenty of storage space, one en-suite.

Positioned on the first floor are two double bedrooms filled with natural light as well as an abundance of built-in cupboards. Residents have access to the communal gardens of Tedworth Square and parking is available, subject to availability and cost.

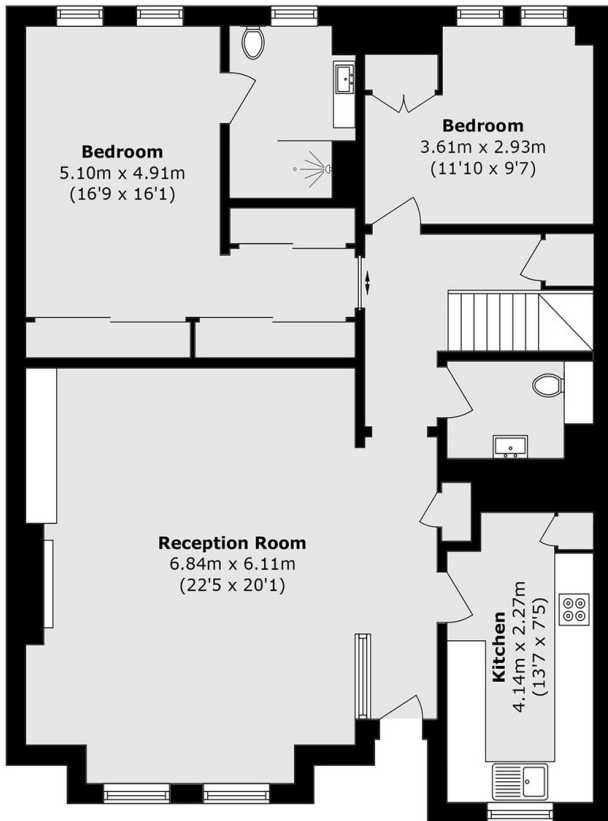
Tedworth Square is ideally located south of the King's Road. Duke of York Square, Pavilion Road and Burton Court are all within walking distance.

### Features

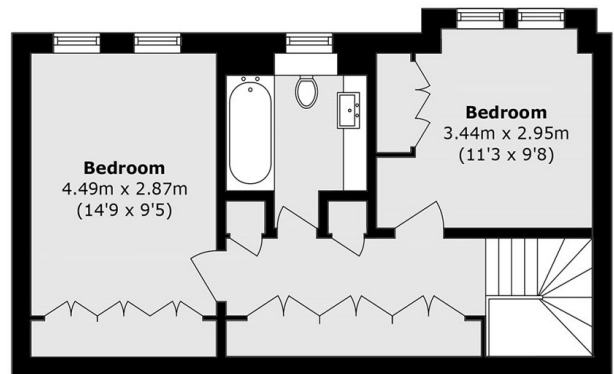
- Private Entrance
- Communal Garden Access
- South Facing
- Share of Freehold
- Residential Caretaker
- Great Condition



# Tedworth Square, London, SW3



**Raised Ground Floor**



**First Floor**

Total area (approx.): 136.5 sq. m (1496.2 sq. ft)